

## PRODUCT DATA SHEET

C6162

**4-Port Dual Directional Coupler** employs two, 3-Port Uni-Directional Couplers, internally connected, in tandem, providing measurement of both forward and reverse power. Ideal for simultaneously monitoring a system's forward and reverse power and for reflectometer measurements. Unlike the Bi-Directional Coupler, the directivity of the Dual Directional Coupler is unaffected by the loads on the coupled ports.

### Features:

High Power      Wide Bandwidths      Small Size      Flat Coupling      Custom Designs Available

### Electrical Specifications:

Frequency: 800 - 2200 MHz  
Power: 200 W CW  
Coupling:  $30 \pm 1.0$  dB Max.  
Insertion Loss: 0.2 dB Max.  
Flatness:  $\pm 0.5$  dB Max.  
VSWR (ML): 1.30:1 Max.  
Directivity: 20 dB Min.

### Mechanical Specifications:

Type: Connectorized  
Material: Aluminum 6061-T6  
Surface Finish: Chem. Film Per MIL-DTL-5541F  
Type I Class 3 (Yellow Iridite)  
RoHS Compliant Available  
Operating Temperature: -55°C to +75°C  
Storage Temperature: -60°C to +85°C  
Humidity: 95% Non-Condensing  
Size: 3.0 x 3.0 x 1.09"

### Connector Configurations:

Model	Input (J1)	Output (J2)	Fwd (J3)	Rev (J4)
C6162-10	N Female	N Female	N Female	N Female
C6162-12	N Female	N Female	SMA	SMA
C6162-13	N Female	N Female	BNC	BNC
C6162-102	SMA	SMA	SMA	SMA
C6162-714	N Male	N Female	N Female	N Female

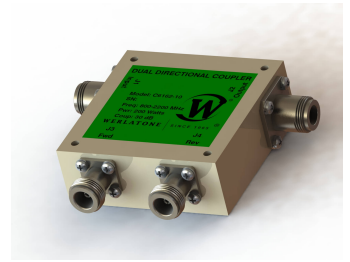
**Werlatone®** Broadband Dual, Uni, and Bi Directional RF Couplers are designed to tolerate the most stringent operating conditions associated with military and EMC testing environments. Many of our RF Directional Couplers, designated Mismatch Tolerant®, will operate continuously, at rated power, into a severe load mismatch condition. Our multi-octave Directional Couplers maintain exceptional coupling flatness, directivity, VSWR, and insertion loss.



# WERLATONE

Model C6162

Connectorized Directional Couplers

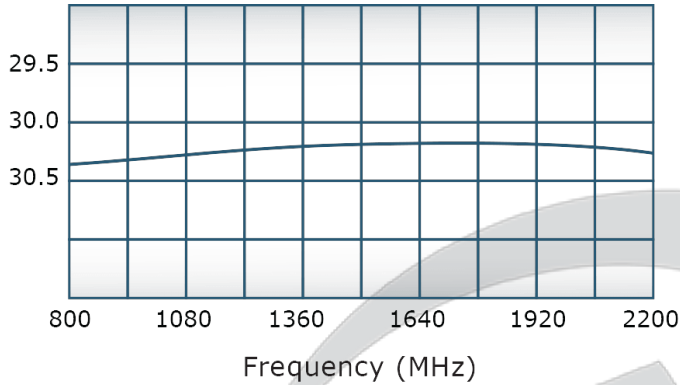


## PRODUCT DATA SHEET

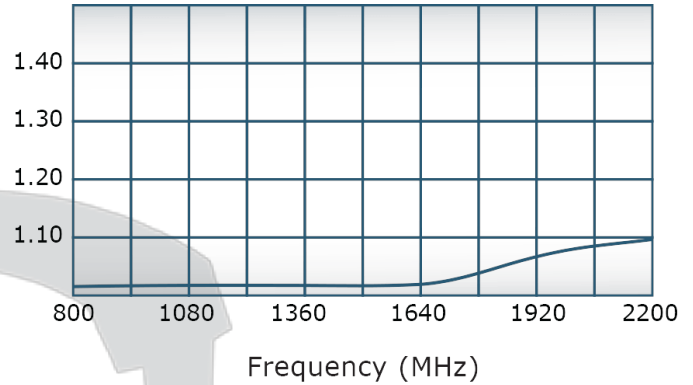
C6162

### Performance Data (Specifications subject to change without notice):

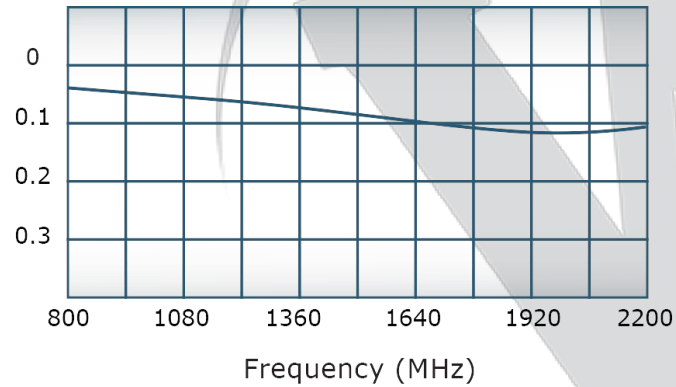
Coupling:



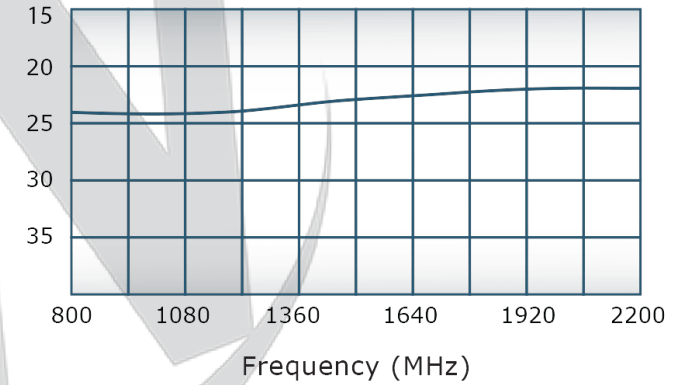
VSWR:



Insertion Loss:



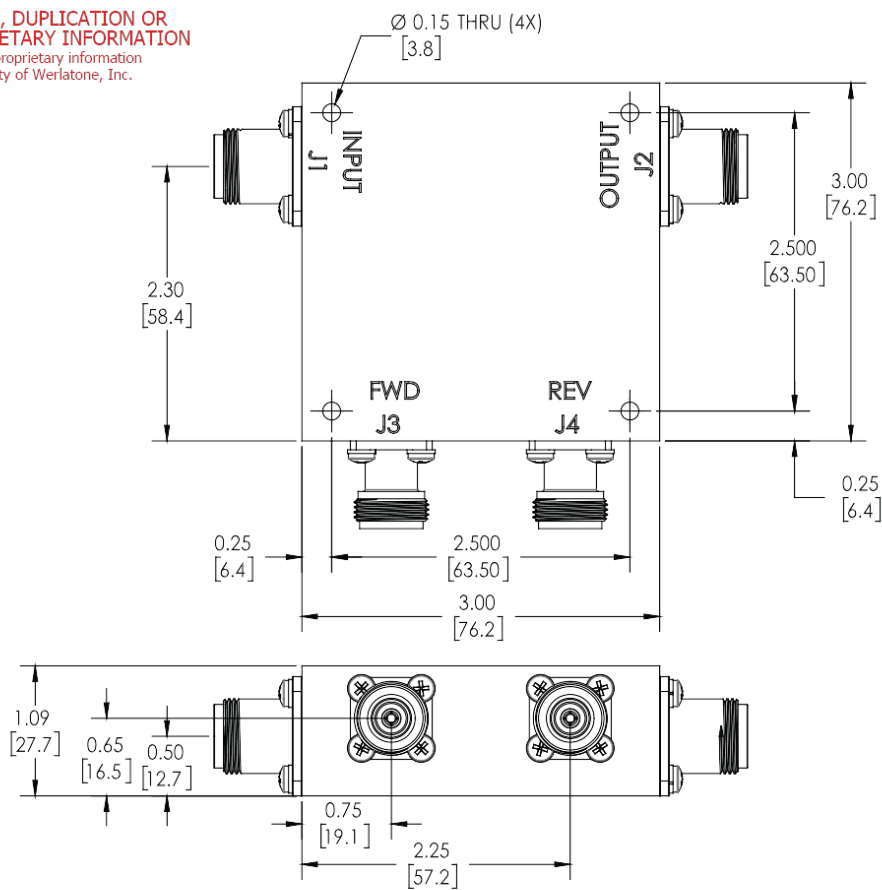
Directivity:



**Restriction on use, duplication, or disclosure of proprietary information.** This document contains proprietary information which is the sole property of Werlatone, Inc.

Werlatone, Inc. 17 Jon Barrett Road Patterson, NY 12563 T:(845)278-2220 F:(845)278-3440 sales@werlatone.com www.werlatone.com




**RESTRICTION ON USE, DUPLICATION OR DISCLOSURE OF PROPRIETARY INFORMATION**  
This document contains proprietary information which is the sole property of Werlatone, Inc.



REVISION HISTORY			
REV.	REVISION RECORD	DATE	APPROVED
A	ECN 9696	11/27/18	RB

**NOTES: UNLESS OTHERWISE SPECIFIED**

1. MATERIAL: ALUMINUM 6061-T6
2. FINISH: CHEM FILM PER MIL-DTL 5541F TYPE I CLASS 3 (YELLOW IRIDITE)

		UNLESS OTHERWISE SPECIFIED		OWN	DATE	 <b>WERLATONE® SINCE 1965</b>	17 Jon Barrett Rd Patterson, NY 12568		
		• INTERPRET DRAWING AS PER: STD-100 • DIMENSIONING PER ASME Y14.5-2009 • ARCHITECTURAL INFO FOR KEY ONLY • DIMENSIONS ARE IN INCHES • DIMENSIONAL LIMITS APPLY BEFORE PROCESSES • TOLERANCES: ANGLES ± 2° 2 P. ± .002 [13] 3 P. ± .005 [38] • REMOVE ALL BURS AND SHARP EDGES R.21 MAX • CONCENTRICITY MACHINED DIA. ±.002 FIM • MACHINE TOOL REGISTRATION ±.002 MAX		RH	7/5/2001		 <b>WERLATONE® SINCE 1965</b>		
				CHK	DATE				
				ENGR	DATE				
				RFGR	7/5/2001				
				QA	DATE				
NEXT ASSY		USED ON				OUTLINE SIZE CAGE CODE DWG NO B 10379-505			
APPLICATION		THIRD ANGLE PROJECTION 		SCALE	DATE	1:1 SHEET 1 OF 1			

**Restriction on use, duplication, or disclosure of proprietary information.** This document contains proprietary information which is the sole property of Werlatone, Inc.  
Werlatone, Inc. 17 Jon Barrett Road Patterson, NY 12563 T:(845)278-2220 F:(845)278-3440 sales@werlatone.com www.werlatone.com