

## PRODUCT DATA SHEET

C2671

**4-Port Dual Directional Coupler** employs two, 3-Port Uni-Directional Couplers, internally connected, in tandem, providing measurement of both forward and reverse power. Ideal for simultaneously monitoring a system's forward and reverse power and for reflectometer measurements. Unlike the Bi-Directional Coupler, the directivity of the Dual Directional Coupler is unaffected by the loads on the coupled ports.

### Features:

High Power      Wide Bandwidths      Small Size      Flat Coupling      Custom Designs Available

### Electrical Specifications:

Frequency: 0.5 - 32 MHz  
Power: 3000 W CW  
Coupling:  $40 \pm 1.0$  dB Max.  
Insertion Loss: 0.1 dB Max.  
Flatness:  $\pm 0.25$  dB Max.  
VSWR (ML): 1.05:1 Max.  
Directivity: 25 dB Min.

### Mechanical Specifications:

Type: Connectorized  
Material: Aluminum 6061-T6  
Surface Finish: Chem. Film Per MIL-DTL-5541F  
Type I Class 3 (Yellow Iridite)  
RoHS Compliant Available  
Operating Temperature: -55°C to +75°C  
Storage Temperature: -60°C to +85°C  
Humidity: 95% Non-Condensing  
Size: 6.46 x 2.52 x 1.2"  
Weight: 1 lb.

### Connector Configurations:

Model	Input (J1)	Output (J2)	Fwd (J3)	Rev (J4)
C2671-10	N Female	N Female	N Female	N Female
C2671-12	N Female	N Female	SMA	SMA
C2671-13	N Female	N Female	BNC	BNC
C2671-20	7/16 Female	7/16 Female	N Female	N Female
C2671-22	7/16 Female	7/16 Female	SMA	SMA
C2671-23	7/16 Female	7/16 Female	BNC	BNC

**Werlatone®** Broadband Dual, Uni, and Bi Directional RF Couplers are designed to tolerate the most stringent operating conditions associated with military and EMC testing environments. Many of our RF Directional Couplers, designated Mismatch Tolerant®, will operate continuously, at rated power, into a severe load mismatch condition. Our multi-octave Directional Couplers maintain exceptional coupling flatness, directivity, VSWR, and insertion loss.

**Restriction on use, duplication, or disclosure of proprietary information.** This document contains proprietary information which is the sole property of Werlatone, Inc.

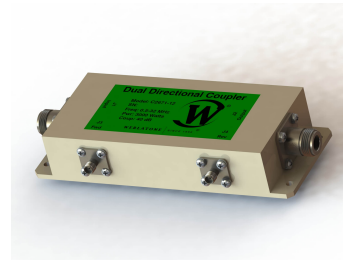
Werlatone, Inc. 17 Jon Barrett Road Patterson, NY 12563 T:(845)278-2220 F:(845)278-3440 sales@werlatone.com www.werlatone.com



# WERLATONE

Model C2671

Connectorized Directional Couplers

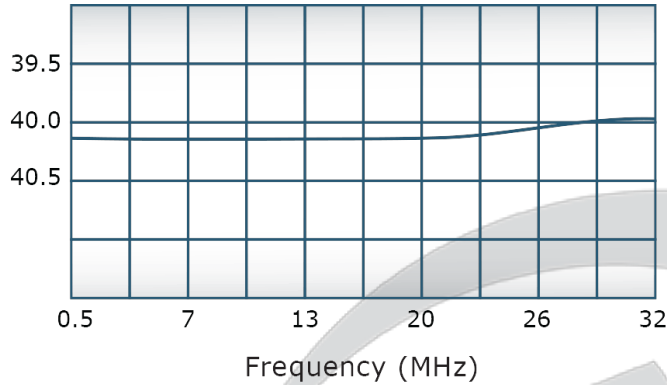


## PRODUCT DATA SHEET

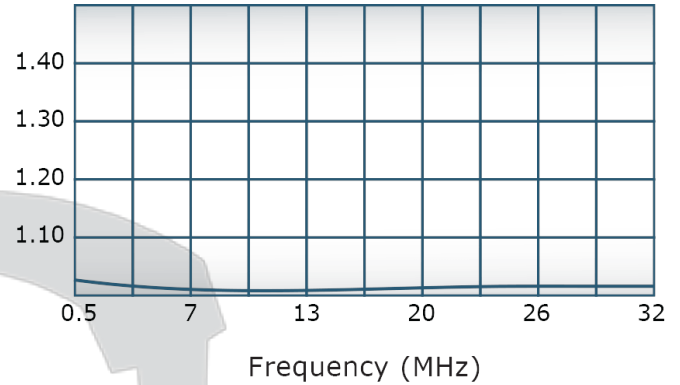
C2671

### Performance Data (Specifications subject to change without notice):

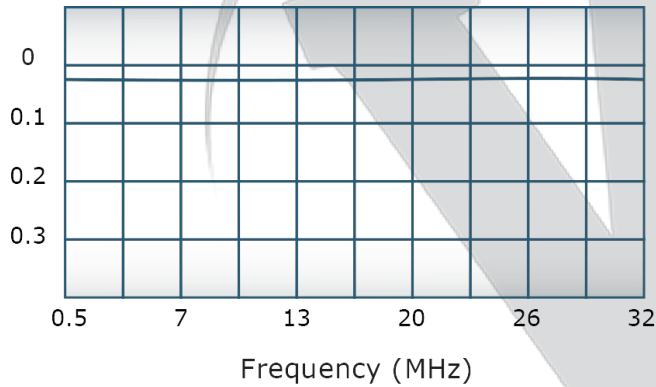
Coupling:



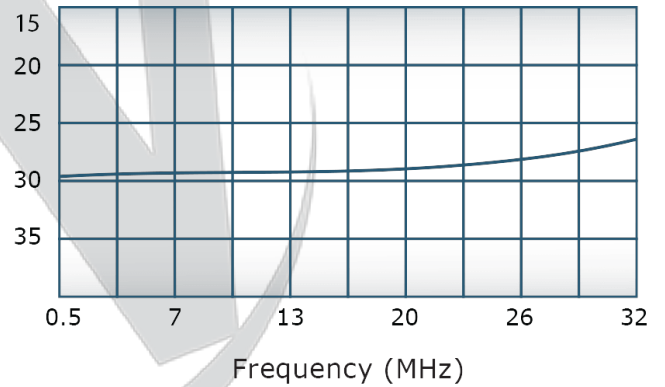
VSWR:



Insertion Loss:



Directivity:



**Restriction on use, duplication, or disclosure of proprietary information.** This document contains proprietary information which is the sole property of Werlatone, Inc.

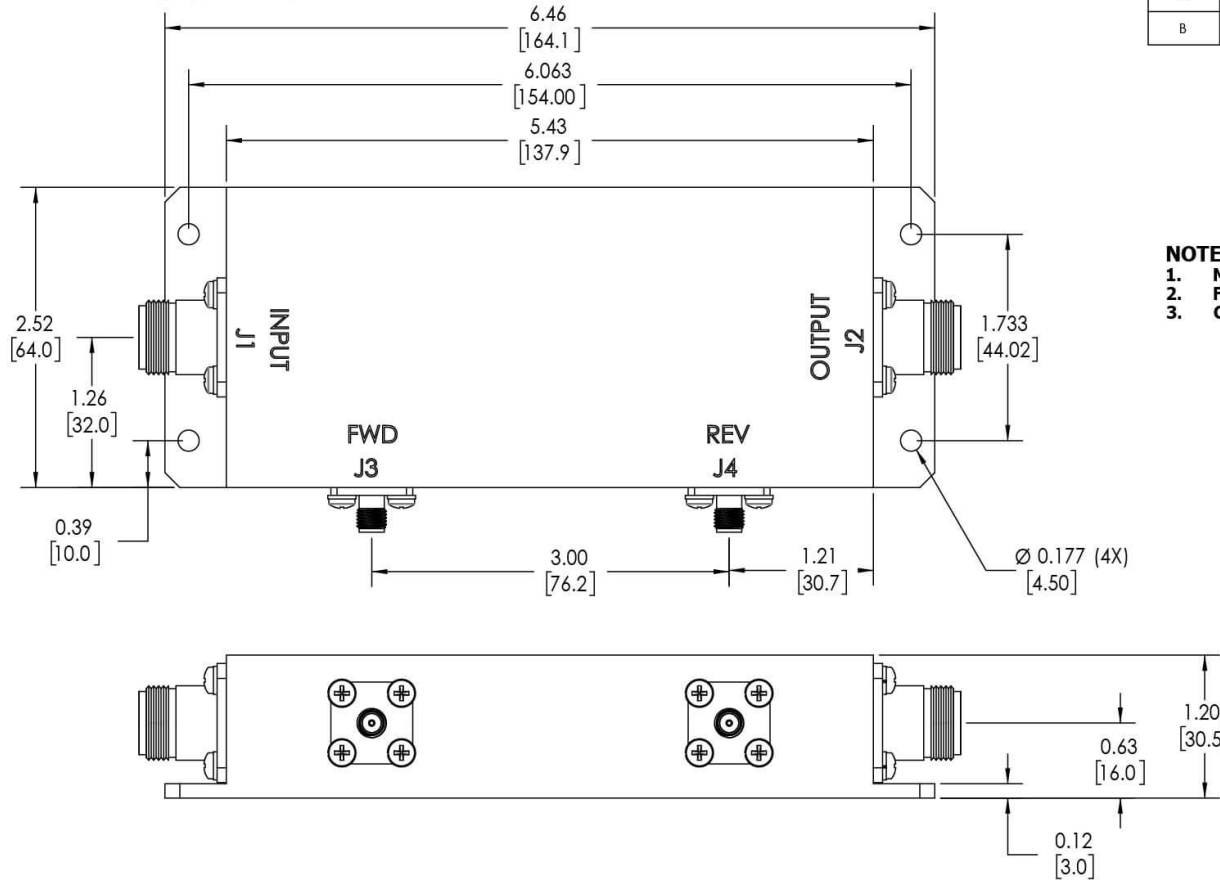
Werlatone, Inc. 17 Jon Barrett Road Patterson, NY 12563 T:(845)278-2220 F:(845)278-3440 sales@werlatone.com www.werlatone.com



**RESTRICTION ON USE, DUPLICATION OR DISCLOSURE OF PROPRIETARY INFORMATION**  
 This document contains proprietary information which is the sole property of Werlatone, Inc.

REVISION HISTORY			
REV.	REVISION RECORD	DATE	APPROVED
A	ECN 1968	3/7/01	BW
B	ECN 9696	3/25/19	RB

**NOTES: UNLESS OTHERWISE SPECIFIED**

- MATERIAL: ALUMINUM 6061-T6**
- FINISH: CHEM FILM PER MIL-DTL-5541F TYPE I CLASS 3 (YELLOW IRIDITE)**
- CONNECTORS:**  
 J1,J2: N FEMALE  
 J3,J4: SMA FEMALE



		UNLESS OTHERWISE SPECIFIED		DWN	DATE		WERLATONE  SINCE 1965		17 Jon Barrett Rd Patterson, NY 12563		
		INTERPRET DRAWING IN ACCORDANCE WITH MIL-STD-100		SD	3/25/2019						
		DIMENSIONS PER ASME Y14.5M-2009		CHK	DATE						
		PARENTHESES FOR REF ONLY		CS	3/25/2019		TITLE				
		DIMENSIONS ARE IN INCHES		ENGR	DATE	<div>OUTLINE</div>					
		DIMENSIONAL LIMITS APPLY BEFORE PROCESSES		INFR	DATE						
		TOLERANCES:		QA	DATE						
		ANGLES ± 2°		RLSE	DATE						
		3 PL ± .005 [13]		<div>SIZE CAGE CODE DWG NO</div> <div>B 10194-500</div>							
		2 PL ± .015 [38]									
		REMOVE ALL BURRS AND SHARP EDGES R.01 MAX									
		CONCENTRICITY MACHINED DIA. .002 FIM									
		MACHINE TOOL MISMATCH .003 MAX		<div>SCALE 1:1</div>							
NEXT ASSY		USED ON									
APPLICATION		THIRD ANGLE PROJECTION 									
		<div>SHEET 1 OF 1</div>									

Restriction on use, duplication, or disclosure of proprietary information. This document contains proprietary information which is the sole property of Werlatone, Inc.  
 Werlatone, Inc. 17 Jon Barrett Road Patterson, NY 12563 T:(845)278-2220 F:(845)278-3440 sales@werlatone.com www.werlatone.com