
PRODUCT DATA SHEET
C7343

4-Port Dual Directional Coupler employs two, 3-Port Uni-Directional Couplers, internally connected, in tandem, providing measurement of both forward and reverse power. Ideal for simultaneously monitoring a system's forward and reverse power and for reflectometer measurements. Unlike the Bi-Directional Coupler, the directivity of the Dual Directional Coupler is unaffected by the loads on the coupled ports.

Electrical Specifications:

Frequency: 1000 - 2000 MHz
Power: 1000 W CW
Coupling: 40 ± 1.0 dB Max.
Insertion Loss: 0.2 dB Max.
Flatness: ± 0.3 dB Max.
VSWR (ML): 1.20:1 Max./1.35:1 Max.
Directivity: 20 dB Min.

Mechanical Specifications:

Type: Connectorized
Material: Aluminum 6061-T6
Surface Finish: Chem. Film Per MIL-DTL-5541F
Type I Class 3 (Yellow Iridite)
RoHS Compliant Available
Operating Temperature: -55°C to +75°C
Storage Temperature: -60°C to +85°C
Humidity: 95% Non-Condensing
Size: 3.0 x 3.0 x 1.09"

Connector Configurations:

Model	Input (J1)	Output (J2)	Fwd (J3)	Rev (J4)
C7343-10	N Female	N Female	N Female	N Female
C7343-12	N Female	N Female	SMA	SMA
C7343-13	N Female	N Female	BNC	BNC
C7343-20*	7/16 Female	7/16 Female	N Female	N Female
C7343-22*	7/16 Female	7/16 Female	SMA	SMA
C7343-23*	7/16 Female	7/16 Female	BNC	BNC
C7343-43	SC Female	SC Female	SMA	SMA
C7343-627*	7/16 Female	7/16 Male	N Female	N Female
C7343-712	N Male	N Female	SMA	SMA
C7343-727*	7/16 Male	7/16 Female	N Female	N Female
C7343-728*	7/16 Male	7/16 Female	SMA	SMA

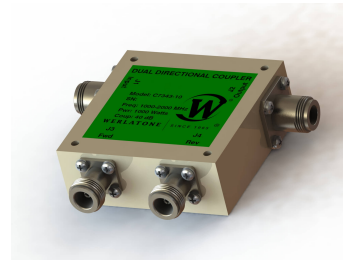
(7/16-F Main Line connector option increases size to 3.0 x 3.0 x 1.59")



WERLATONE

Model C7343

Connectorized Directional Couplers

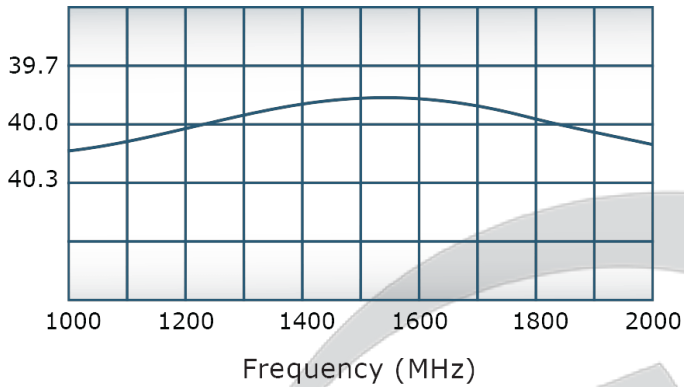


PRODUCT DATA SHEET

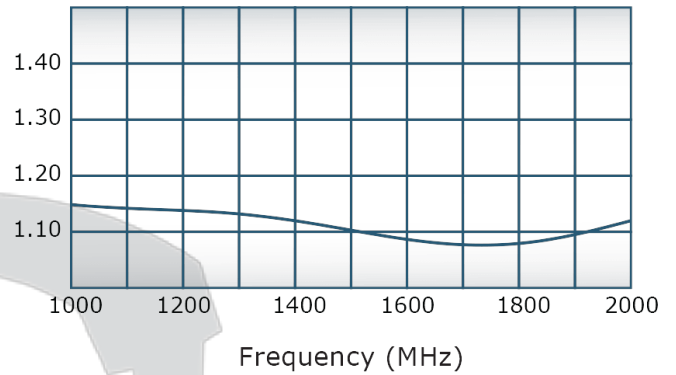
C7343

Performance Data (Specifications subject to change without notice):

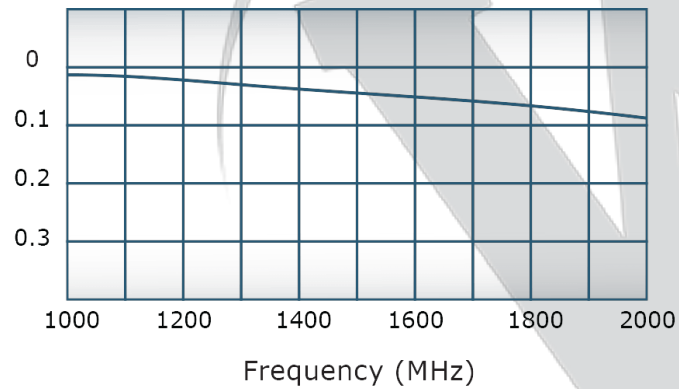
Coupling:



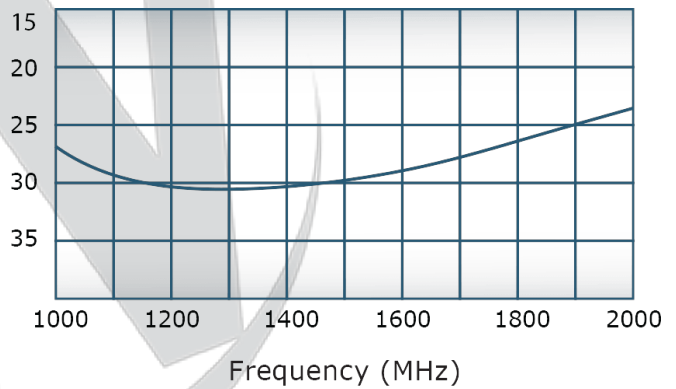
VSWR:



Insertion Loss:



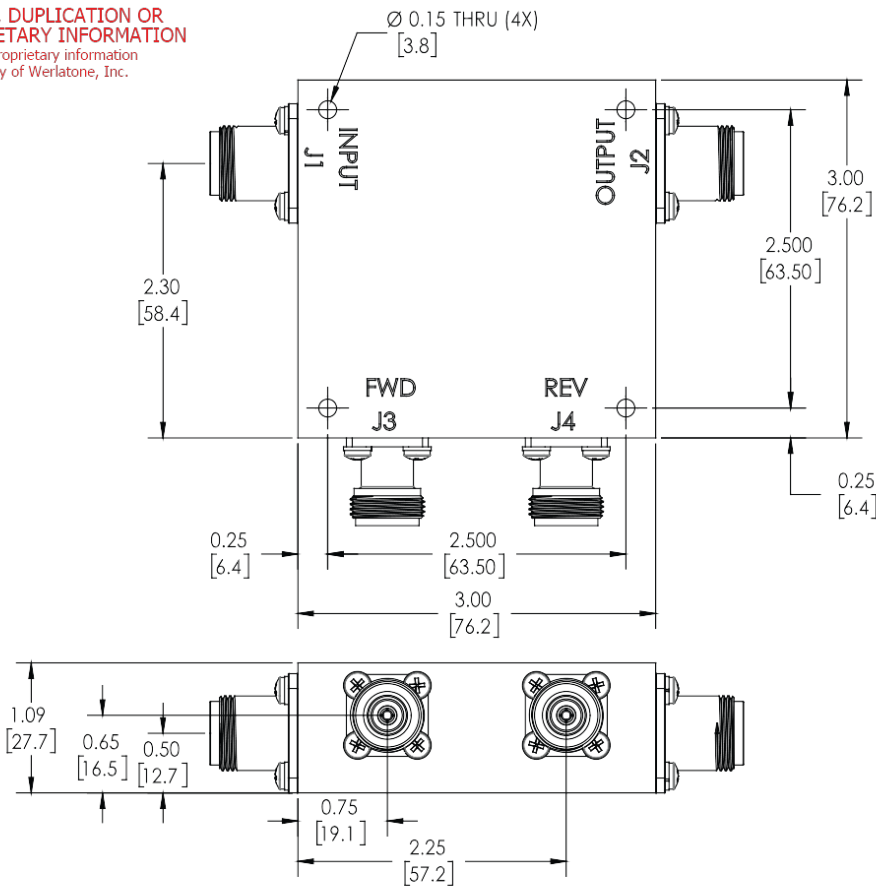
Directivity:



Restriction on use, duplication, or disclosure of proprietary information. This document contains proprietary information which is the sole property of Werlatone, Inc.

Werlatone, Inc. 17 Jon Barrett Road Patterson, NY 12563 T:(845)278-2220 F:(845)278-3440 sales@werlatone.com www.werlatone.com


RESTRICTION ON USE, DUPLICATION OR DISCLOSURE OF PROPRIETARY INFORMATION
This document contains proprietary information which is the sole property of Werlatone, Inc.



REVISION HISTORY			
REV.	REVISION RECORD	DATE	APPROVED
A	ECN 9696	11/27/18	RB

NOTES: UNLESS OTHERWISE SPECIFIED

- MATERIAL: ALUMINUM 6061-T6**
- FINISH: CHEM FILM PER MIL-DTL_5541F TYPE I CLASS 3 (YELLOW IRIDITE)**

		UNLESS OTHERWISE SPECIFIED		OWN	DATE	<div> WERLATONE® SINCE 1965</div>		17 Jon Barrett Rd Patterson, NY 12563	
		• INTERPRET DRAWING JAW MIL-STD-100		RH	7/5/2001				
		• DIMENSIONING PER ASME Y14.5M-2009		CHK	DATE	TITLE		OUTLINE	
		• PARENTHESES FOR REF ONLY		ENGR	7/5/2001				
		• DIMENSIONS ARE IN INCHES		MJ	DATE	SIZE		CAGE CODE	
		• DIMENSIONAL LIMITS APPLY BEFORE PROCESSES		MPGR	DATE				
		• TOLERANCES:		QA	DATE	B		10379-505	
		ANGLES: ± 2°		RLSE	DATE				
		3 PL. ± .005 [1.3]				SHEET 1 OF 1			
		2 PL. ± .015 [3.8]						REV	
		• REMOVE ALL BURRS AND SHARP EDGES R.01 MAX				NEXT ASSY			
		• CONCENTRICITY MACHINED DIA: .002 FIM						APPLICATION	
		• MACHINE TOOL MISMATCH: .003 MAX							

Restriction on use, duplication, or disclosure of proprietary information. This document contains proprietary information which is the sole property of Werlatone, Inc.
Werlatone, Inc. 17 Jon Barrett Road Patterson, NY 12563 T:(845)278-2220 F:(845)278-3440 sales@werlatone.com www.werlatone.com