



PRODUCT DATA SHEET

C6207

4-Port Dual Directional Coupler employs two, 3-Port Uni-Directional Couplers, internally connected, in tandem, providing measurement of both forward and reverse power. Ideal for simultaneously monitoring a system's forward and reverse power and for reflectometer measurements. Unlike the Bi-Directional Coupler, the directivity of the Dual Directional Coupler is unaffected by the loads on the coupled ports.

Features:

High Power Wide Bandwidths Small Size Flat Coupling Custom Designs Available

Electrical Specifications:

Frequency: 1 - 30 MHz
Power: 100 W CW
Coupling: 40 ± 1.0 dB Max.
Insertion Loss: 0.15 dB Max.
Flatness: ± 0.25 dB Max.
VSWR (ML): 1.15:1 Max.
Directivity: 20 dB Min.

Mechanical Specifications:

Type: Connectorized
Material: Aluminum 6061-T6
Surface Finish: Chem. Film Per MIL-DTL-5541F
Type I Class 3 (Yellow Iridite)
RoHS Compliant Available
Operating Temperature: -55°C to +75°C
Storage Temperature: -60°C to +85°C
Humidity: 95% Non-Condensing
Size: 4.0 x 2.0 x 1.88"

Connector Configurations:

Model	Input (J1)	Output (J2)	Fwd (J3)	Rev (J4)
C6207-10	N Female	N Female	N Female	N Female
C6207-12	N Female	N Female	SMA	SMA
C6207-13	N Female	N Female	BNC	BNC
C6207-102	SMA	SMA	SMA	SMA
C6207-200	BNC	BNC	BNC	BNC

Werlatone® Broadband Dual, Uni, and Bi Directional RF Couplers are designed to tolerate the most stringent operating conditions associated with military and EMC testing environments. Many of our RF Directional Couplers, designated Mismatch Tolerant®, will operate continuously, at rated power, into a severe load mismatch condition. Our multi-octave Directional Couplers maintain exceptional coupling flatness, directivity, VSWR, and insertion loss.



WERLATONE

Model C6207

Connectorized Directional Couplers

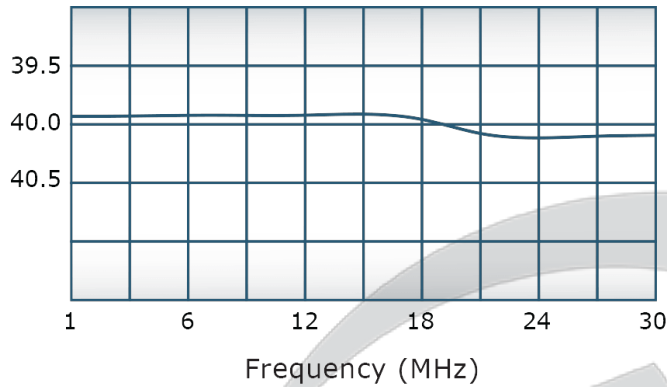


PRODUCT DATA SHEET

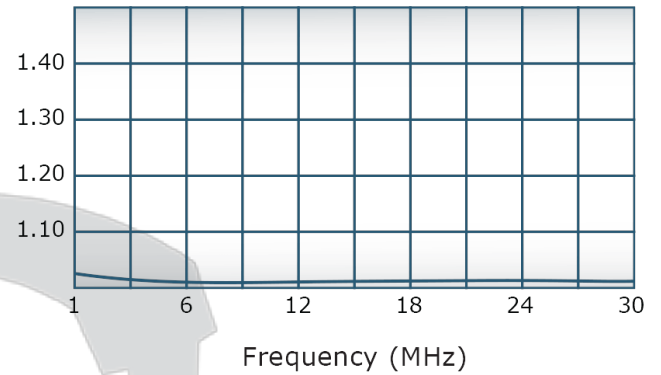
C6207

Performance Data (Specifications subject to change without notice):

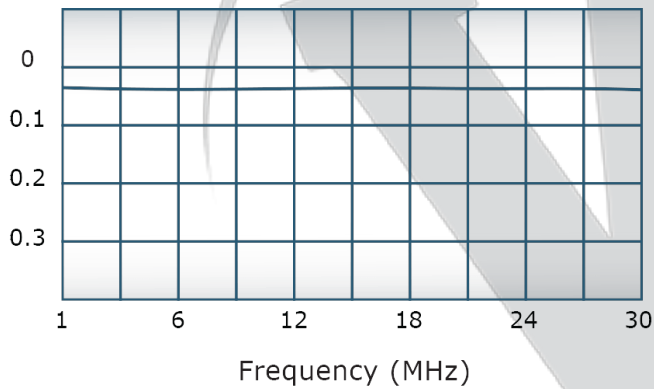
Coupling:



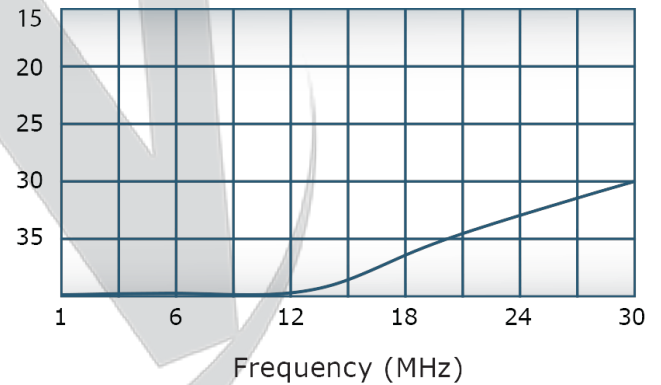
VSWR:



Insertion Loss:



Directivity:

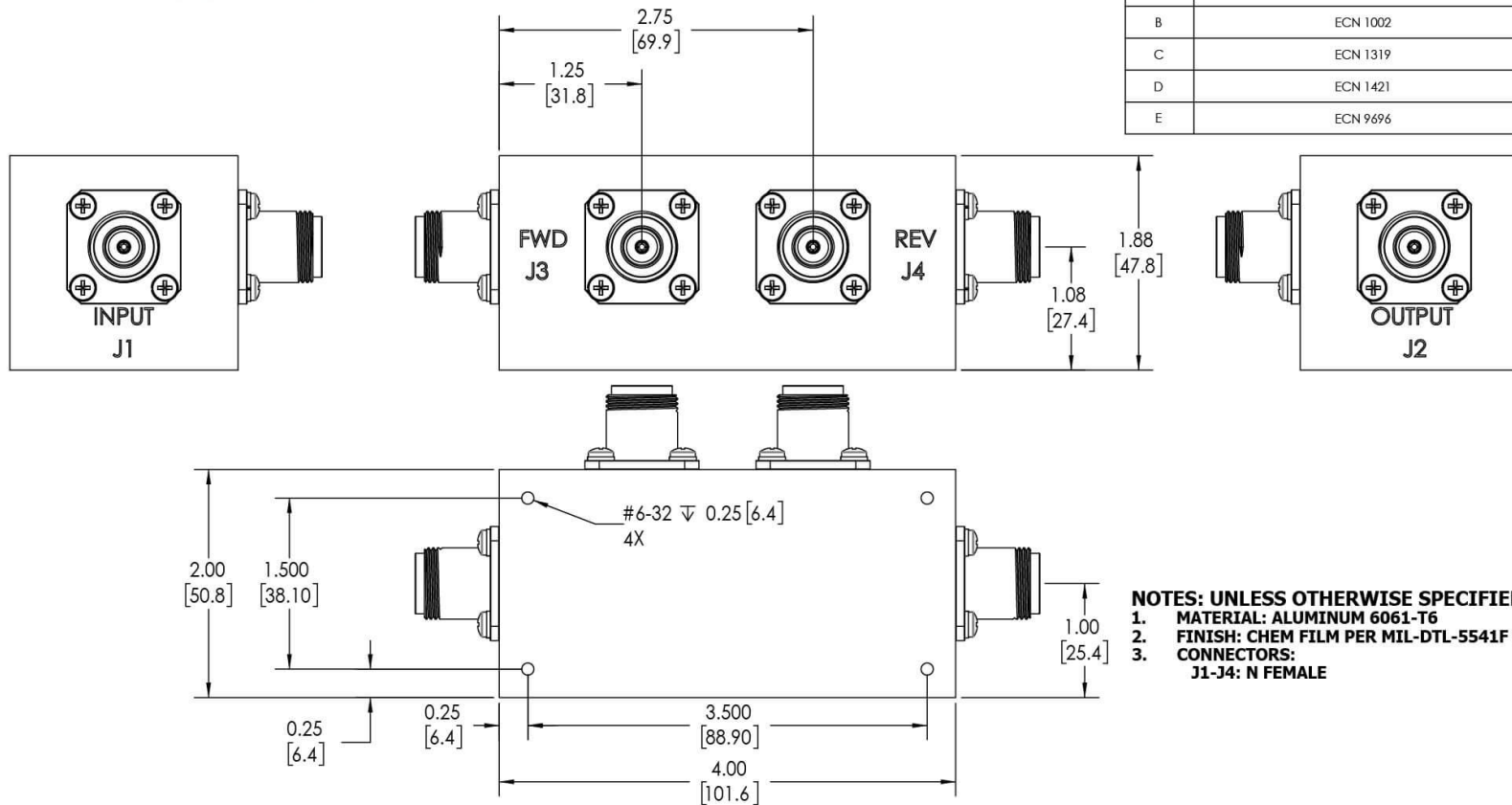


Restriction on use, duplication, or disclosure of proprietary information. This document contains proprietary information which is the sole property of Werlatone, Inc.

Werlatone, Inc. 17 Jon Barrett Road Patterson, NY 12563 T:(845)278-2220 F:(845)278-3440 sales@werlatone.com www.werlatone.com



RESTRICTION ON USE, DUPLICATION OR DISCLOSURE OF PROPRIETARY INFORMATION
This document contains proprietary information which is the sole property of Werlatone, Inc.

REVISION HISTORY			
REV.	REVISION RECORD	DATE	APPROVED
A	ECN 1001	10/86	GW
B	ECN 1002	6/92	DK
C	ECN 1319	4/95	CS
D	ECN 1421	12/96	CS
E	ECN 9696	11/18	RB



NOTES: UNLESS OTHERWISE SPECIFIED

1. MATERIAL: ALUMINUM 6061-T6
2. FINISH: CHEM FILM PER MIL-DTL-5541F TYPE I CLASS 3 (YELLOW IRIDITE)
3. CONNECTORS:
J1-J4: N FEMALE

		UNLESS OTHERWISE SPECIFIED		OWN	DATE	 WERLATONE SINCE 1965		17 Jon Barrett Rd Patterson, NY 12563	
		INTERPRET DRAWING IN MIL-STD-130		SD	2/11/2019				
		DIMENSIONS PER ASME Y14.5M-2009		CHK	DATE				
		DIMENSIONAL INFO FOR REF ONLY		CS	2/11/2019				
		DIMENSIONS ARE IN INCHES		ENGR	DATE	OUTLINE SIZE CAGE CODE DWSG NO B 10018-500		REV E	
		DIMENSIONAL LIMITS APPLY BEFORE PROCESS		INGR	DATE				
		TOLERANCES:		QA	DATE				
		ANGLES ± .2° 3 PL ± .005 [13] 2 PL ± .015 [38]		RLSE	DATE				
		REMOVE ALL BUBBS AND SHARP EDGES R.01 MAX							
		CONCENTRICITY MACHINED DIA. .002 F3M							
		MACHINE TOOL HORIZONTAL .003 MACH							
NEXT ASSY		USED ON							
APPLICATION		THIRD ANGLE PROJECTION 							
				SCALE		1:1		SHEET 1 OF 1	

Restriction on use, duplication, or disclosure of proprietary information. This document contains proprietary information which is the sole property of Werlatone, Inc. Werlatone, Inc. 17 Jon Barrett Road Patterson, NY 12563 T:(845)278-2220 F:(845)278-3440 sales@werlatone.com www.werlatone.com