

PRODUCT DATA SHEET

C5960

4-Port Dual Directional Coupler employs two, 3-Port Uni-Directional Couplers, internally connected, in tandem, providing measurement of both forward and reverse power. Ideal for simultaneously monitoring a system's forward and reverse power and for reflectometer measurements. Unlike the Bi-Directional Coupler, the directivity of the Dual Directional Coupler is unaffected by the loads on the coupled ports.

Features:

High Power Wide Bandwidths Small Size Flat Coupling Custom Designs Available

Electrical Specifications:

Frequency: 0.01 - 250 MHz
Power: 1000 W CW
Coupling: 50 ± 1.0 dB Max.
Insertion Loss: 0.4 dB Max.
Flatness: ± 0.75 dB Max.
VSWR (ML): 1.25:1 Max.
Directivity: 20 dB Min.

Mechanical Specifications:

Type: Connectorized
Material: Aluminum 6061-T6
Surface Finish: Chem. Film Per MIL-DTL-5541F
Type I Class 3 (Yellow Iridite)
RoHS Compliant Available
Operating Temperature: -55°C to +75°C
Storage Temperature: -60°C to +85°C
Humidity: 95% Non-Condensing
Size: 10.5 x 3.0 x 2.0"

Connector Configurations:

Model	Input (J1)	Output (J2)	Fwd (J3)	Rev (J4)
C5960-10	N Female	N Female	N Female	N Female
C5960-12	N Female	N Female	SMA	SMA
C5960-13	N Female	N Female	BNC	BNC
C5960-20	7/16 Female	7/16 Female	N Female	N Female
C5960-41	SC Female	SC Female	N Female	N Female
C5960-43	SC Female	SC Female	SMA	SMA
C5960-610	N Female	N Male	N Female	N Female

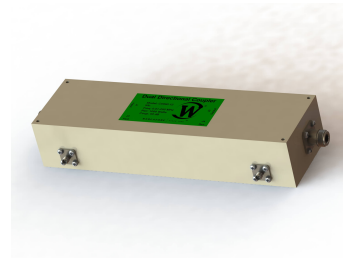
Werlatone® Broadband Dual, Uni, and Bi Directional RF Couplers are designed to tolerate the most stringent operating conditions associated with military and EMC testing environments. Many of our RF Directional Couplers, designated Mismatch Tolerant®, will operate continuously, at rated power, into a severe load mismatch condition.



WERLATONE

Model C5960

Connectorized Directional Couplers

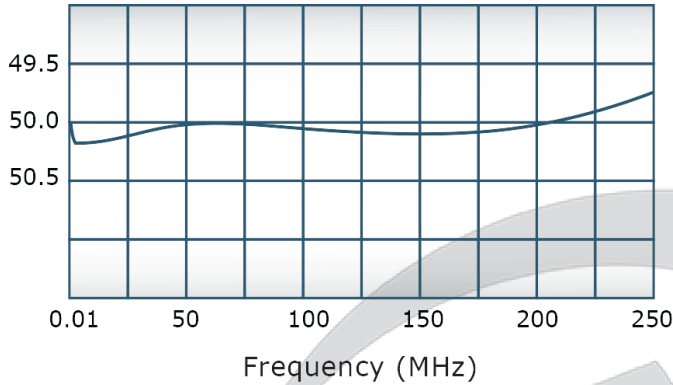


PRODUCT DATA SHEET

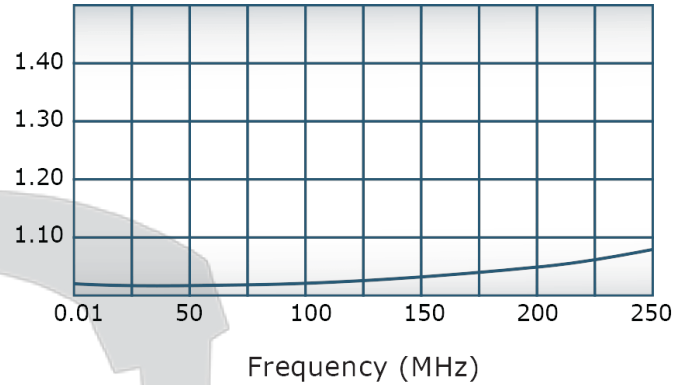
C5960

Performance Data (Specifications subject to change without notice):

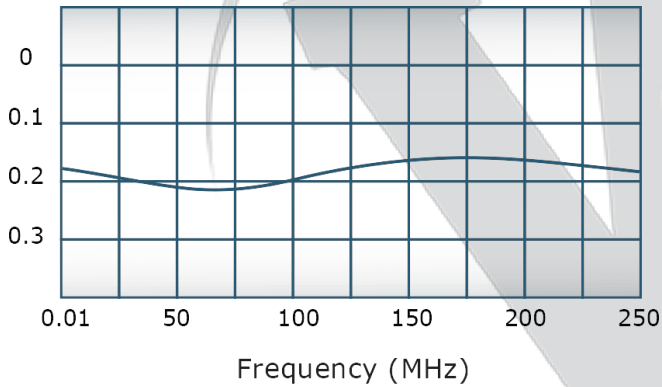
Coupling:



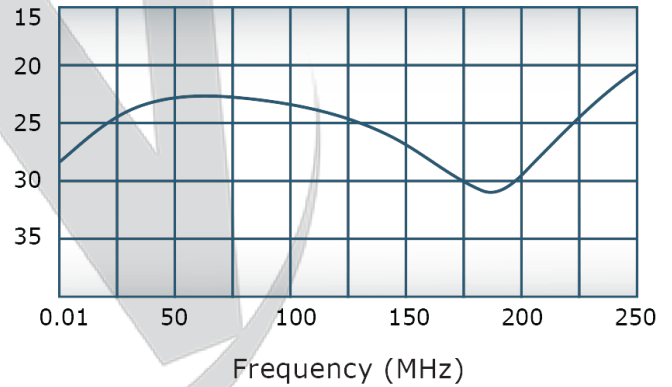
VSWR:



Insertion Loss:



Directivity:



Restriction on use, duplication, or disclosure of proprietary information. This document contains proprietary information which is the sole property of Werlatone, Inc.

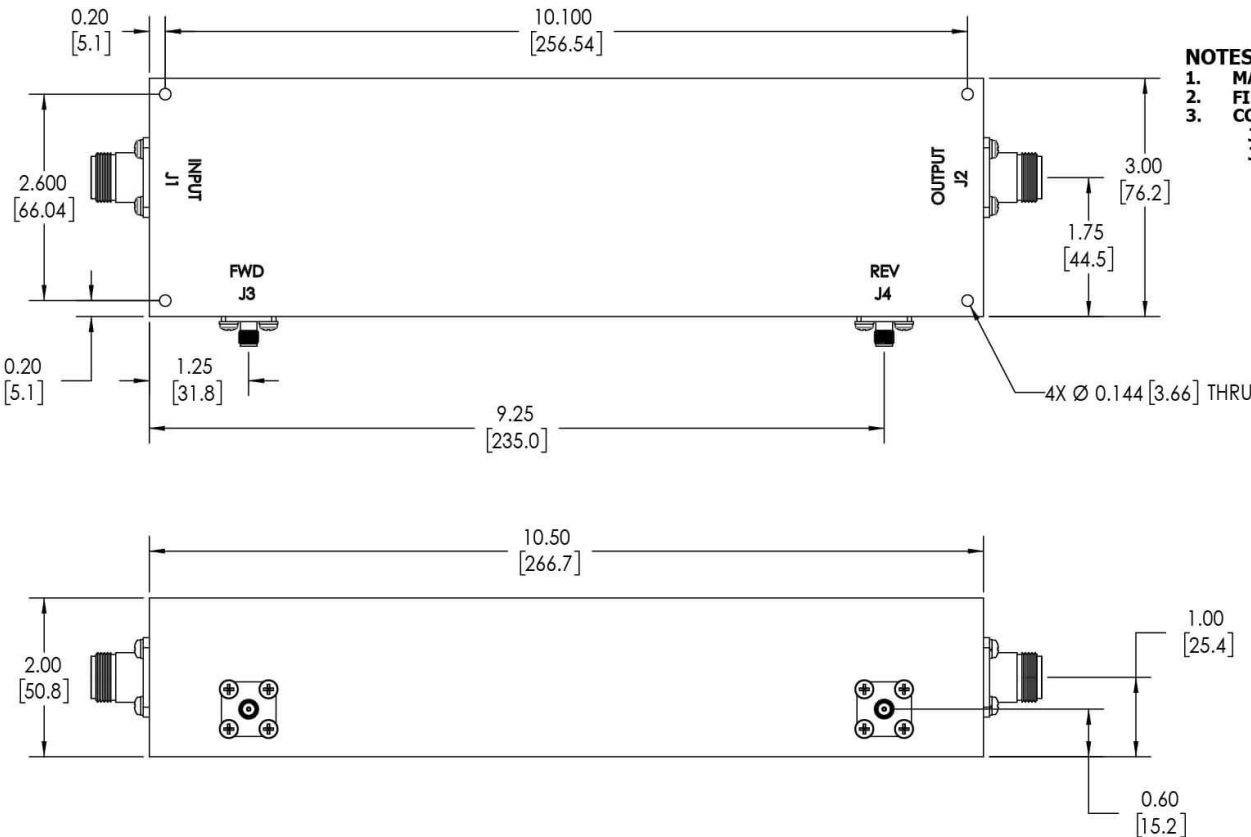
Werlatone, Inc. 17 Jon Barrett Road Patterson, NY 12563 T:(845)278-2220 F:(845)278-3440 sales@werlatone.com www.werlatone.com


RESTRICTION ON USE, DUPLICATION OR DISCLOSURE OF PROPRIETARY INFORMATION
 This document contains proprietary information which is the sole property of Werlatone, Inc.

REVISION HISTORY			
REV.	REVISION RECORD	DATE	APPROVED
A	ECN 9696	5/13/2019	RB

NOTES: UNLESS OTHERWISE SPECIFIED

- MATERIAL: ALUMINUM 6061-T6**
- FINISH: CHEM FILM PER MIL-DTL-5541F TYPE I CLASS 3 (YELLOW IRIDITE)**
- CONNECTORS:**
J1-J2: N FEMALE
J3-J4: SMA FEMALE



UNLESS OTHERWISE SPECIFIED		SD	DATE	17 Jon Barrett Rd Patterson, NY 12563	
INTERPRET DRAWING IN ACCORDANCE WITH MIL-STD-100		CHK	DATE	 WERLATONE SINCE 1965	
DIMENSIONS FOR ASME Y14.5M-2009		CS	DATE		
PARENTHESES INFO FOR REF ONLY		ENGR	DATE	OUTLINE	
DIMENSIONS ARE IN INCHES		INFR	DATE		
DIMENSIONAL LIMITS APPLY BEFORE PROCESSES		QA	DATE	SIZE	CAGE CODE
TOLERANCES:		RLSE	DATE	B	10449-501
ANGLES ± 2°		THIRD ANGLE PROJECTION		SCALE	1:1.5
3 PL ± .005 (13)				DWG NO	10449-501
2 PL ± .015 (38)				REV	A
REMOVE ALL BURRS AND SHARP EDGES R.01 MAX				SHEET 1 OF 1	
CONCENTRICITY MACHINED DIA. .002 FIM					
MACHINE TOOL MISMATCH .003 MAX					

Restriction on use, duplication, or disclosure of proprietary information. This document contains proprietary information which is the sole property of Werlatone, Inc.
 Werlatone, Inc. 17 Jon Barrett Road Patterson, NY 12563 T:(845)278-2220 F:(845)278-3440 sales@werlatone.com www.werlatone.com