

## PRODUCT DATA SHEET

C3807

**4-Port Dual Directional Coupler** employs two, 3-Port Uni-Directional Couplers, internally connected, in tandem, providing measurement of both forward and reverse power. Ideal for simultaneously monitoring a system's forward and reverse power and for reflectometer measurements. Unlike the Bi-Directional Coupler, the directivity of the Dual Directional Coupler is unaffected by the loads on the coupled ports.

### Features:

High Power      Wide Bandwidths      Small Size      Flat Coupling      Custom Designs Available

### Electrical Specifications:

Frequency: 0.03 - 30 MHz  
Power: 5250 W CW  
Coupling:  $50 \pm 1.0$  dB Max.  
Insertion Loss: 0.05 dB Max.  
Flatness:  $\pm 0.5$  dB Max.  
VSWR (ML): 1.10:1 Max.  
Directivity: 20 dB Min.

### Mechanical Specifications:

Type: Connectorized  
Material: Aluminum 6061-T6  
Surface Finish: Chem. Film Per MIL-DTL-5541F  
Type I Class 3 (Yellow Iridite)  
RoHS Compliant Available  
Operating Temperature: -55°C to +75°C  
Storage Temperature: -60°C to +85°C  
Humidity: 95% Non-Condensing  
Size: 5.0 x 3.0 x 2.24"

### Connector Configurations:

Model	Input (J1)	Output (J2)	Fwd (J3)	Rev (J4)
C3807-10	N Female	N Female	N Female	N Female
C3807-12	N Female	N Female	SMA	SMA
C3807-13	N Female	N Female	BNC	BNC
C3807-20	7/16 Female	7/16 Female	N Female	N Female
C3807-23	7/16 Female	7/16 Female	BNC	BNC
C3807-30	LC Female	LC Female	N Female	N Female
C3807-64	HN Female	HN Female	BNC Female	BNC Female
C3807-751	HN Female	HN Male	BNC Female	BNC Female
C3807-QC-0	QC Block	QC Block	N Female	N Female
C3807-QC-2	QC Block	QC Block	SMA	SMA
C3807-7501	SQS Male	SQS Female	N Female	N Female
C3807-7503	SQS Male	SQS Female	BNC	BNC

**Restriction on use, duplication, or disclosure of proprietary information.** This document contains proprietary information which is the sole property of Werlatone, Inc.

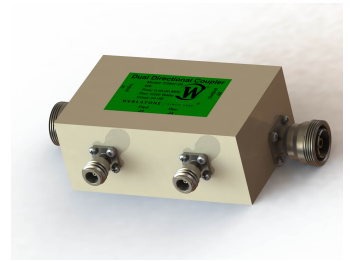
Werlatone, Inc. 17 Jon Barrett Road Patterson, NY 12563 T:(845)278-2220 F:(845)278-3440 sales@werlatone.com www.werlatone.com



# WERLATONE

Model C3807

Connectorized Directional Couplers

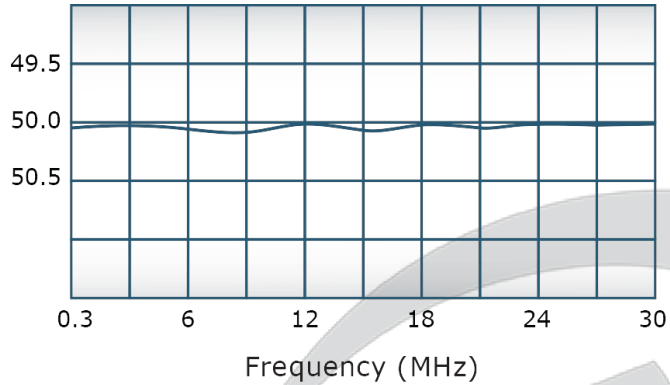


## PRODUCT DATA SHEET

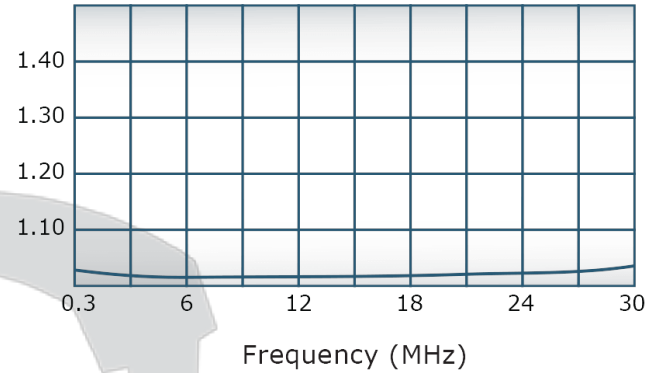
C3807

### Performance Data (Specifications subject to change without notice):

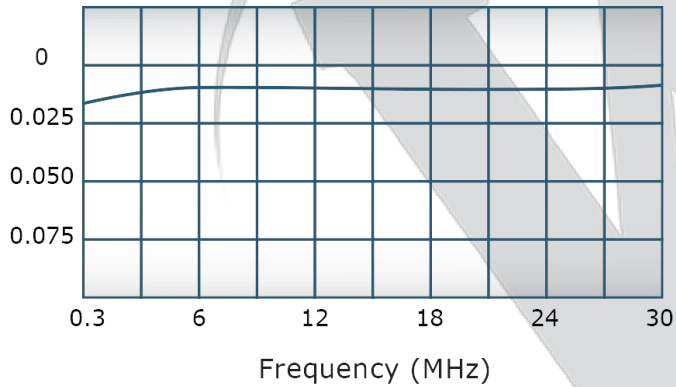
Coupling:



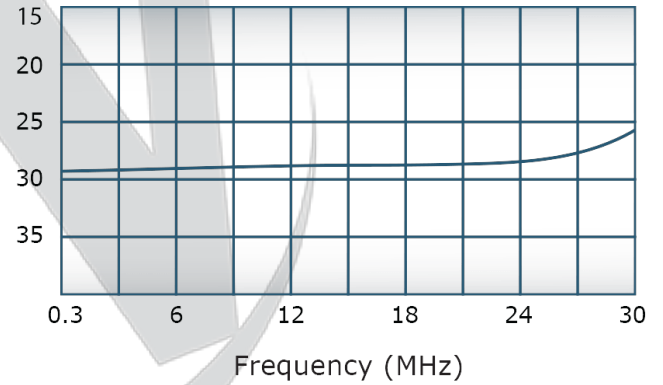
VSWR:



Insertion Loss:

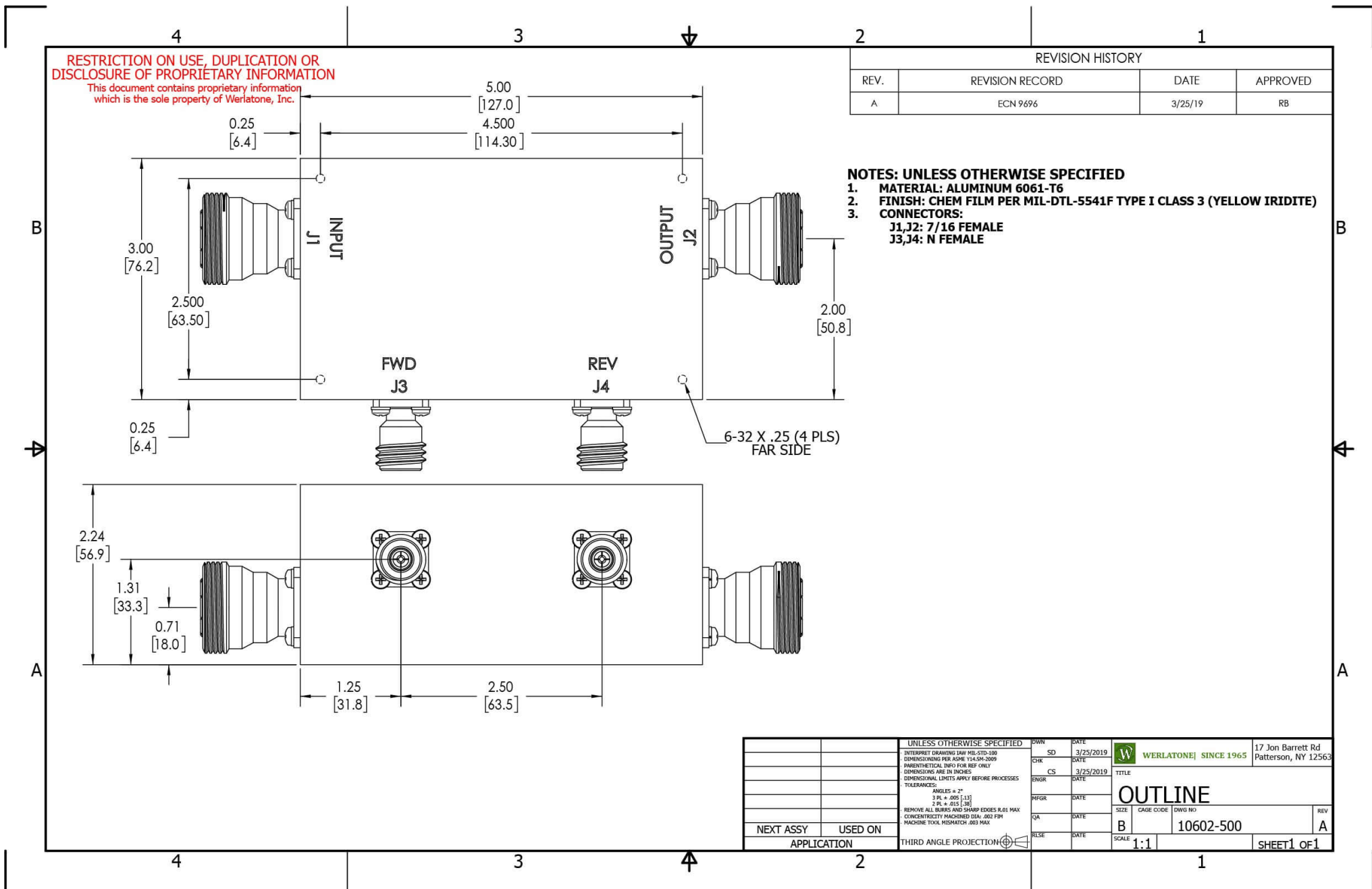


Directivity:



**Restriction on use, duplication, or disclosure of proprietary information.** This document contains proprietary information which is the sole property of Werlatone, Inc.

Werlatone, Inc. 17 Jon Barrett Road Patterson, NY 12563 T:(845)278-2220 F:(845)278-3440 sales@werlatone.com www.werlatone.com



Restriction on use, duplication, or disclosure of proprietary information. This document contains proprietary information which is the sole property of Werlatone, Inc.  
Werlatone, Inc. 17 Jon Barrett Road Patterson, NY 12563 T:(845)278-2220 F:(845)278-3440 sales@werlatone.com www.werlatone.com