
**PRODUCT DATA SHEET**
**C6338**

**4-Port Dual Directional Coupler** employs two, 3-Port Uni-Directional Couplers, internally connected, in tandem, providing measurement of both forward and reverse power. Ideal for simultaneously monitoring a system's forward and reverse power and for reflectometer measurements. Unlike the Bi-Directional Coupler, the directivity of the Dual Directional Coupler is unaffected by the loads on the coupled ports.

**Features:**

High Power      Wide Bandwidths      Small Size      Flat Coupling      Custom Designs Available

**Electrical Specifications:**

Frequency: 80 - 1000 MHz  
Power: 2500 W CW  
Coupling:  $50 \pm 1.0$  dB Max.  
Insertion Loss: 0.1 dB Max.  
Flatness:  $\pm 0.3$  dB Max.  
VSWR (ML): 1.20:1 Max.  
Directivity: 20 dB Min.

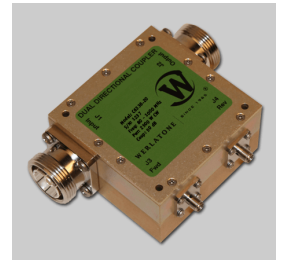
**Mechanical Specifications:**

Type: Connectorized  
Material: Aluminum 6061-T6  
Surface Finish: Chem. Film Per MIL-DTL-5541F  
Type I Class 3 (Yellow Iridite)  
RoHS Compliant Available  
Operating Temperature: -55°C to +75°C  
Storage Temperature: -60°C to +85°C  
Humidity: 95% Non-Condensing  
Size: 3.0 x 3.0 x 1.59"

**Connector Configurations:**

Model	Input (J1)	Output (J2)	Fwd (J3)	Rev (J4)
C6338-20	7/16 Female	7/16 Female	N Female	N Female
C6338-22	7/16 Female	7/16 Female	SMA	SMA
C6338-23	7/16 Female	7/16 Female	BNC	BNC
C6338-41*	SC Female	SC Female	N Female	N Female
C6338-43*	SC Female	SC Female	SMA	SMA
C6338-73	7/8" EIA	7/8" EIA	SMA	SMA
C6338-627	7/16 Female	7/16 Male	N Female	N Female
C6338-727	7/16 Male	7/16 Female	N Female	N Female
C6338-728	7/16 Male	7/16 Female	SMA	SMA

(SC-F Main Line connector option decreases size to 3.0 x 3.0 x 1.09")

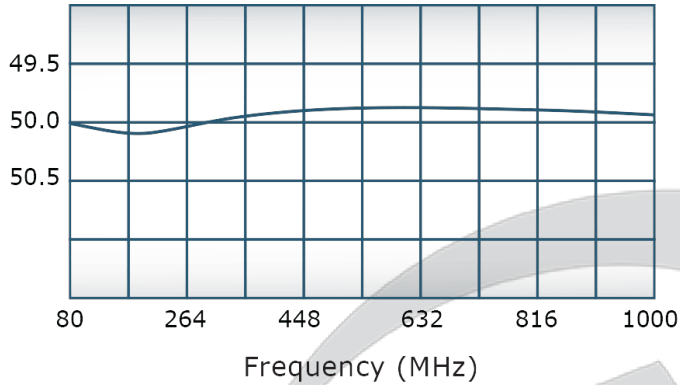


## PRODUCT DATA SHEET

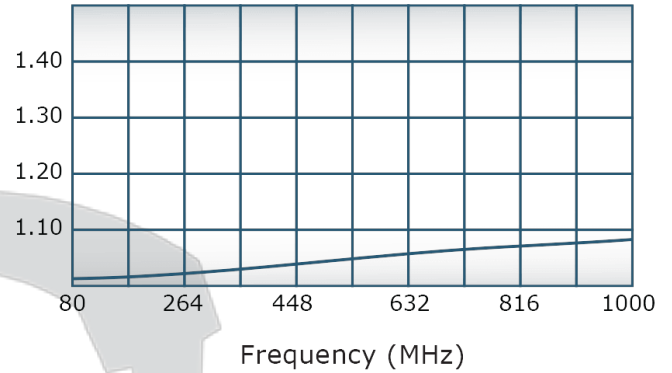
C6338

### Performance Data (Specifications subject to change without notice):

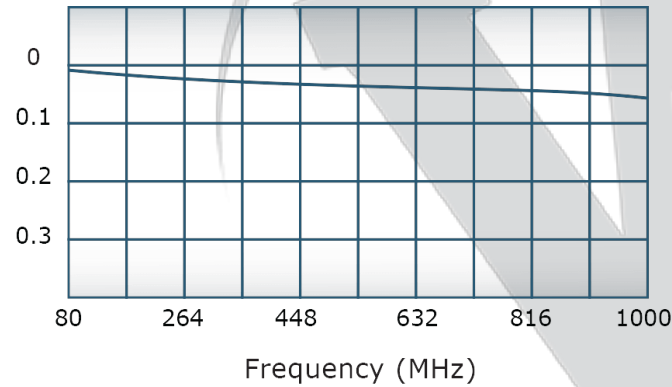
Coupling:



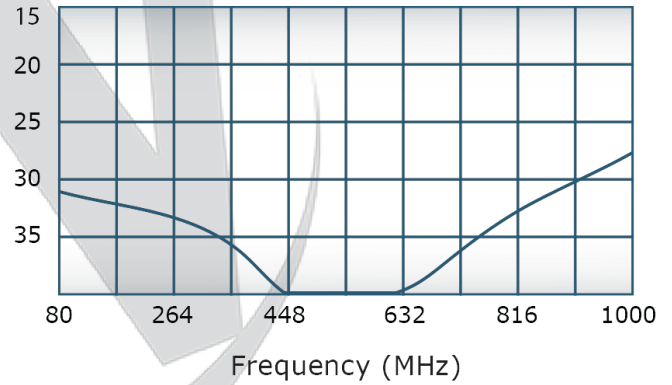
VSWR:



Insertion Loss:



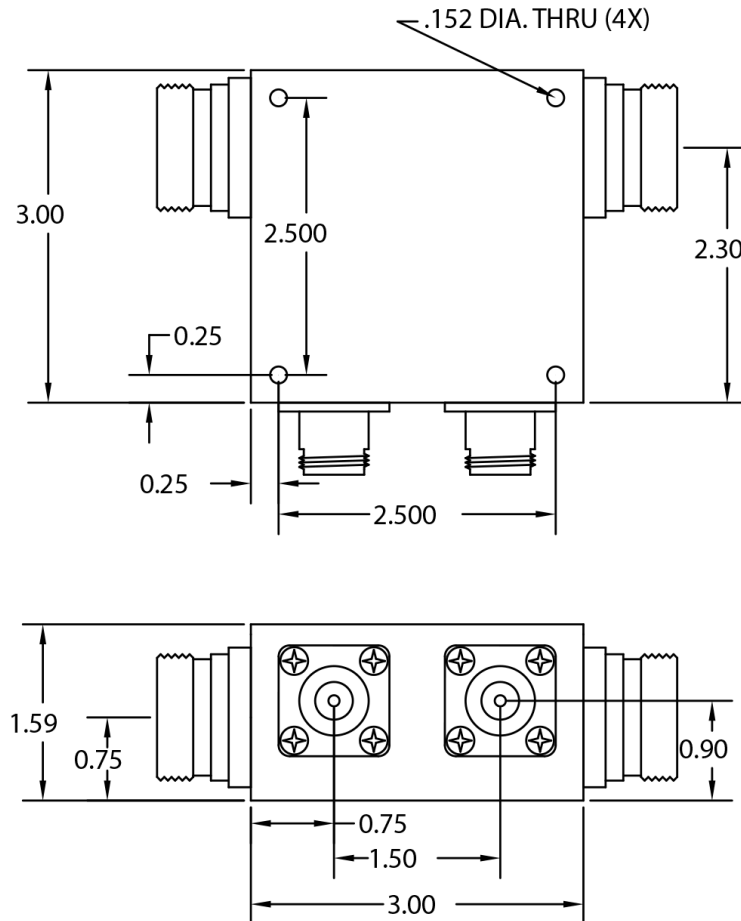
Directivity:



Restriction on use, duplication, or disclosure of proprietary information. This document contains proprietary information which is the sole property of Werlatone, Inc.

Werlatone, Inc. 17 Jon Barrett Road Patterson, NY 12563 T:(845)278-2220 F:(845)278-3440 sales@werlatone.com www.werlatone.com

DATE	SYM	REVISION RECORD	AUTH	DR	CK



THIS DRAWING CONTAINS INFORMATION  
PROPRIETARY TO WERLATONE INC. AND  
MAY NOT BE USED OR COPIED WITHOUT  
THE WRITTEN CONSENT OF WERLATONE INC.

TOLERANCE	WERLATONE INC.			
XX +/- .015 XXX +/- .005	USED ON:	SCALE	DRAWN BY: RH	APPRD BY:
	TITLE <b>OUTLINE</b>			
	DATE 4/4/01	DRAWING NUMBER <b>10443-501</b>		

**Restriction on use, duplication, or disclosure of proprietary information.** This document contains proprietary information which is the sole property of Werlatone, Inc.  
Werlatone, Inc. 17 Jon Barrett Road Patterson, NY 12563 T:(845)278-2220 F:(845)278-3440 sales@werlatone.com www.werlatone.com