

PRODUCT DATA SHEET

C6222

4-Port Dual Directional Coupler employs two, 3-Port Uni-Directional Couplers, internally connected, in tandem, providing measurement of both forward and reverse power. Ideal for simultaneously monitoring a system's forward and reverse power and for reflectometer measurements. Unlike the Bi-Directional Coupler, the directivity of the Dual Directional Coupler is unaffected by the loads on the coupled ports.

Features:

High Power Wide Bandwidths Small Size Flat Coupling Custom Designs Available

Electrical Specifications:

Frequency: 25 - 500 MHz
Power: 5,250 W CW
Coupling: 60 ± 1.0 dB Max.
Insertion Loss: 0.05 dB Max.
Flatness: ± 0.35 dB Max.
VSWR (ML): 1.15:1 Max.
Directivity: 30 dB Min.

Mechanical Specifications:

Type: Connectorized
Material: Aluminum 6061-T6
Surface Finish: Chem. Film Per MIL-DTL-5541F
Type I Class 3 (Yellow Iridite)
RoHS Compliant Available
Operating Temperature: -55°C to +75°C
Storage Temperature: -60°C to +85°C
Humidity: 95% Non-Condensing
Size: 3.0 x 3.0 x 1.09"

Connector Configurations:

Model	Input (J1)	Output (J2)	Fwd (J3)	Rev (J4)
C6222-10	N Female	N Female	N Female	N Female
C6222-12	N Female	N Female	SMA	SMA
C6222-20*	7/16 Female	7/16 Female	N Female	N Female
C6222-22*	7/16 Female	7/16 Female	SMA	SMA
C6222-23*	7/16 Female	7/16 Female	BNC	BNC
C6222-30*	LC Female	LC Female	N Female	N Female
C6222-43	SC Female	SC Female	SMA	SMA
C6222-48	SC Female	SC Male	N Female	N Female
C6222-64	HN Female	HN Female	BNC	BNC
C6222-71*	7/8" EIA	7/8" EIA	N Female	N Female
C6222-481	SC Male	SC Female	N Female	N Female

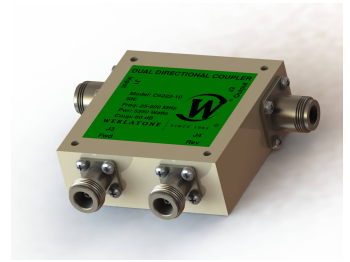
*Starred options are 3.0 x 3.0 x 1.59"



WERLATONE

Model C6222

Connectorized Directional Couplers

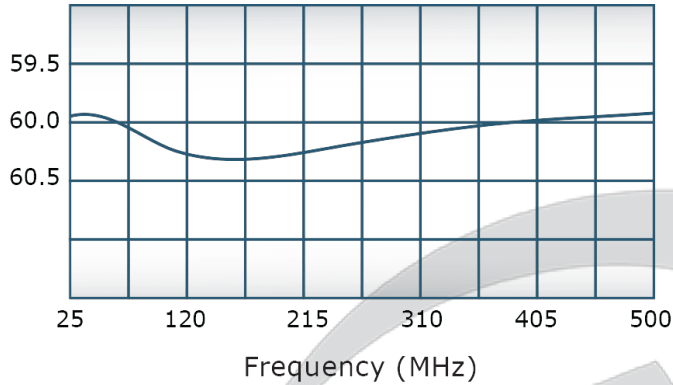


PRODUCT DATA SHEET

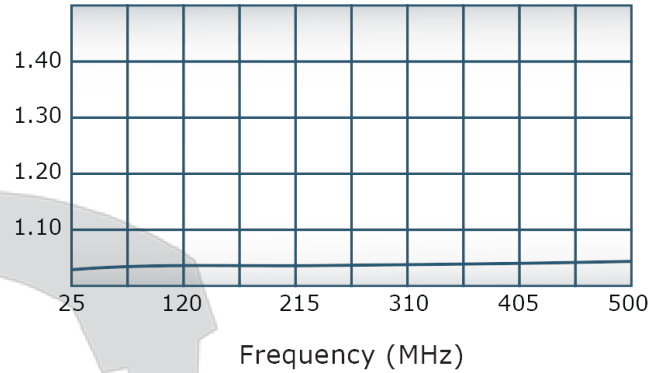
C6222

Performance Data (Specifications subject to change without notice):

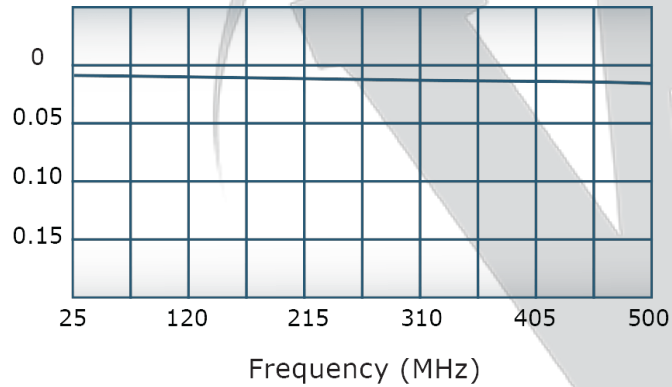
Coupling:



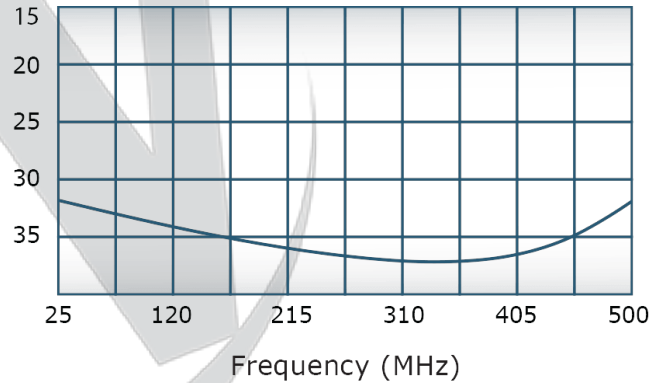
VSWR:



Insertion Loss:



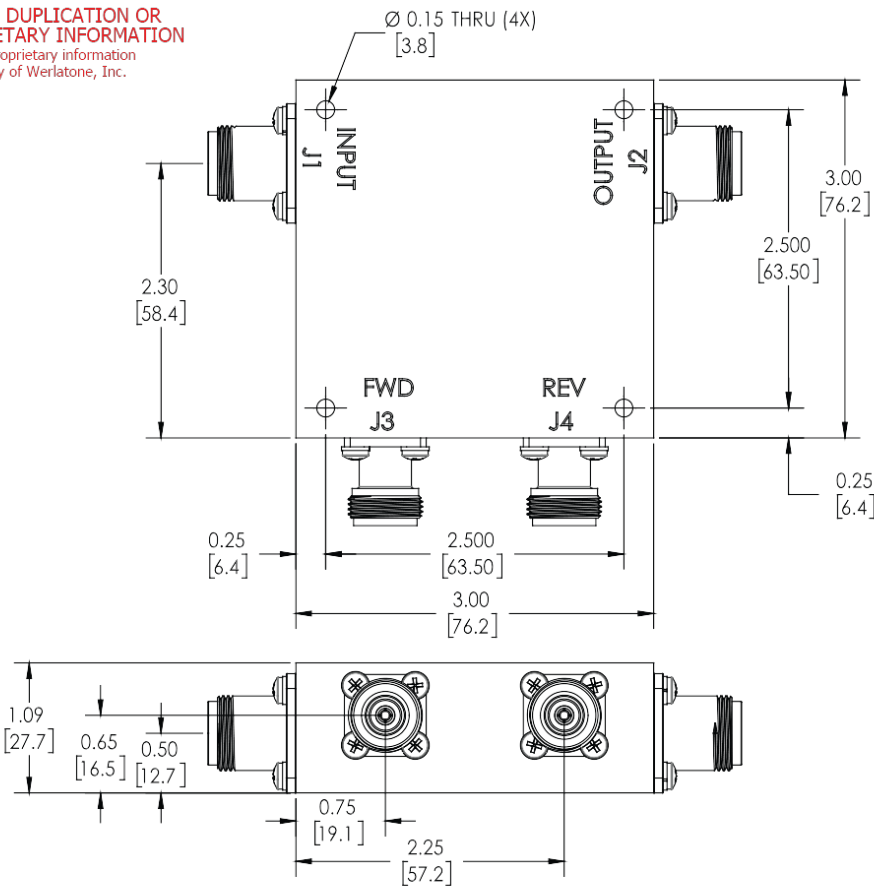
Directivity:



Restriction on use, duplication, or disclosure of proprietary information. This document contains proprietary information which is the sole property of Werlatone, Inc.

Werlatone, Inc. 17 Jon Barrett Road Patterson, NY 12563 T:(845)278-2220 F:(845)278-3440 sales@werlatone.com www.werlatone.com



RESTRICTION ON USE, DUPLICATION OR DISCLOSURE OF PROPRIETARY INFORMATION
This document contains proprietary information which is the sole property of Werlatone, Inc.



REVISION HISTORY			
REV.	REVISION RECORD	DATE	APPROVED
A	ECN 9696	11/27/18	RB

NOTES: UNLESS OTHERWISE SPECIFIED

- MATERIAL: ALUMINUM 6061-T6**
- FINISH: CHEM FILM PER MIL-DTL_5541F TYPE I CLASS 3 (YELLOW IRIDITE)**

		UNLESS OTHERWISE SPECIFIED		DWGN	DATE	<div> WERLATONE SINCE 1965</div> <div>17 Jon Barrett Rd Patterson, NY 12563</div>	
		<ul style="list-style-type: none">• INTERPRET DRAWING JAW MIL-STD-100• DIMENSIONING PER ASME Y14.5M-2009• PARENTHETICAL INFO FOR REF ONLY• DIMENSIONS ARE IN INCHES• DIMENSIONAL LIMITS APPLY BEFORE PROCESSES• TOLERANCES:<ul style="list-style-type: none">ANGLES ± 2°3 PL. ± .005 [1.3]2 PL. ± .015 [3.8]• REMOVE ALL BURRS AND SHARP EDGES R.01 MAX• CONCENTRICITY MACHINED DIA: .002 FIM• MACHINE TOOL MISMATCH: .003 MAX		CHK	DATE		
				ENGR	DATE	<div>TITLE</div> <div>OUTLINE</div> <div>SIZE CAGE CODE DWG NO</div> <div>B 10379-505</div>	
				M3	7/5/2001		
				MFR	DATE	<div>REV</div> <div>A</div>	
				QA	DATE		
				DATE	DATE	<div>SCALE</div> <div>1:1</div>	
				DATE	DATE		
NEXT ASSY USED ON		THIRD ANGLE PROJECTION 				<div>SHEET 1 OF 1</div>	
APPLICATION							

Restriction on use, duplication, or disclosure of proprietary information. This document contains proprietary information which is the sole property of Werlatone, Inc.
Werlatone, Inc. 17 Jon Barrett Road Patterson, NY 12563 T:(845)278-2220 F:(845)278-3440 sales@werlatone.com www.werlatone.com