

PRODUCT DATA SHEET

C6149

Non-Isolated Uneven Splitters (Taps): Utilized to un-evenly split a single run of 50 Ohm coaxial cable, hosting multiple frequency bands, so that a shorter corridor, tunnel, shaft, or hallway is provided a lesser portion of power on the main coaxial run than that required by a longer run. Non-Isolated Uneven Splitters are Bi-Directional, and unlike Directional Couplers, all ports can communicate with one another.

Features:

High Power Wide Bandwidths Small Size Flat Coupling Custom Designs Available

Electrical Specifications:

Frequency: 120 - 470 MHz
Power: 100 W CW
Coupling: 6 ± 1.0 dB Max.
Insertion Loss: 0.75 dB Max.
Flatness: ± 1.0 dB Max.
VSWR (ML): 1.40:1 Max.

Mechanical Specifications:

Type: Connectorized
Material: Aluminum 6061-T6
Surface Finish: Chem. Film Per MIL-DTL-5541F
Type I Class 3 (Yellow Iridite)
RoHS Compliant Available
Operating Temperature: -55°C to +75°C
Storage Temperature: -60°C to +85°C
Humidity: 95% Non-Condensing
Size: 2.5 x 1.75 x 1.5"
Weight: 7 ounces

Port Configurations:

Model	Input (J1)	Output (J2)	Fwd (J3)
C6149-10	N Female	N Female	N Female

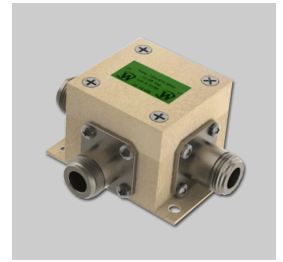
Werlatone® Broadband Non-Isolated Uneven Splitters (Taps) are designed to tolerate the most stringent operating conditions associated with Distributive Antenna Systems (DAS).



WERLATONE

Model C6149

Connectorized Directional Couplers

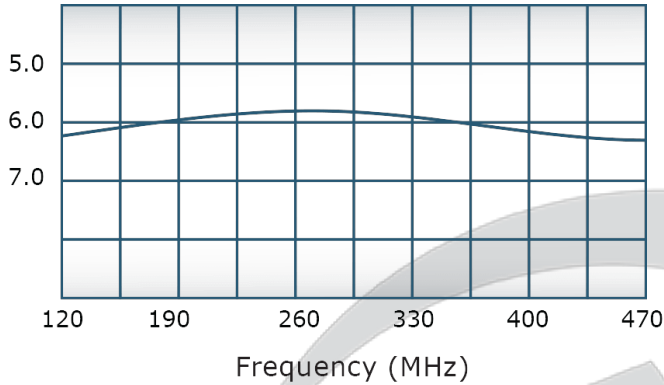


PRODUCT DATA SHEET

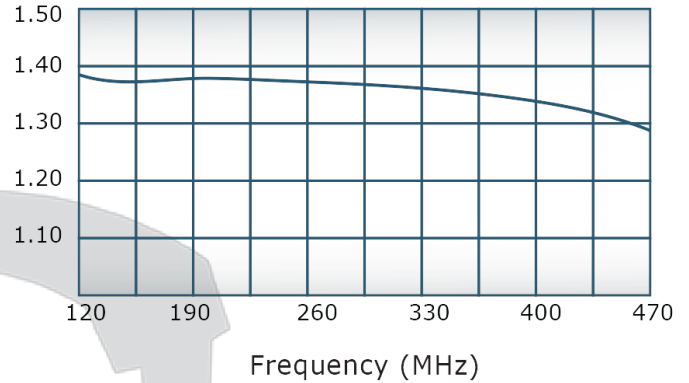
C6149

Performance Data (Specifications subject to change without notice):

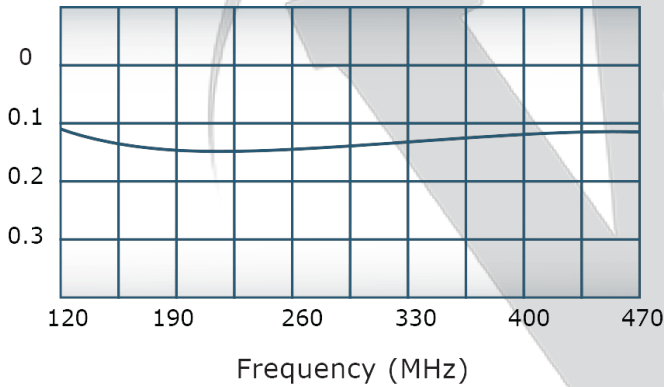
Coupling:



VSWR:



Insertion Loss:



For In-Building Applications

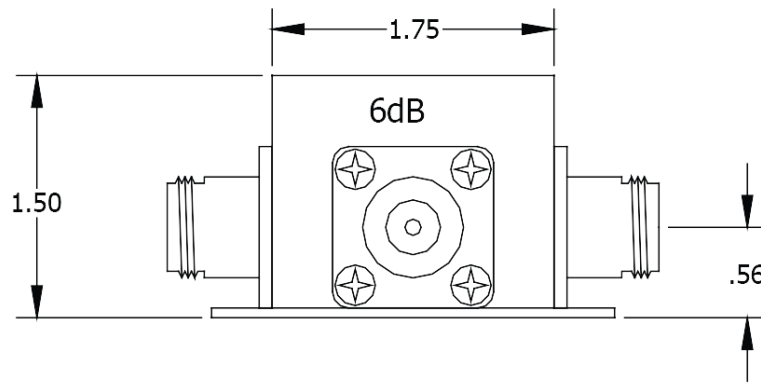
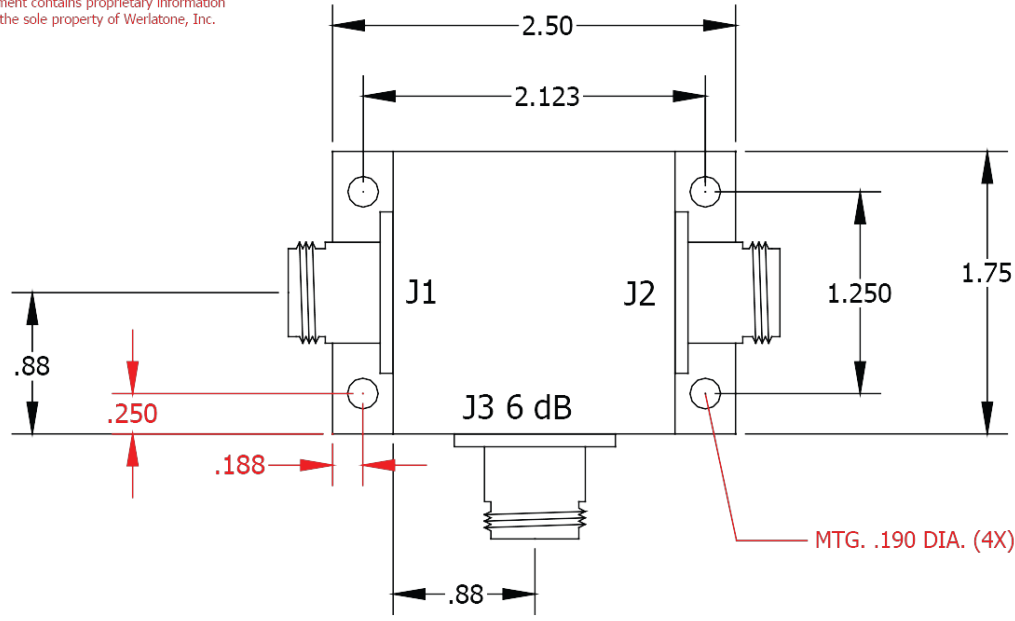


Restriction on use, duplication, or disclosure of proprietary information. This document contains proprietary information which is the sole property of Werlatone, Inc.

Werlatone, Inc. 17 Jon Barrett Road Patterson, NY 12563 T:(845)278-2220 F:(845)278-3440 sales@werlatone.com www.werlatone.com

RESTRICTION ON USE, DUPLICATION OR
DISCLOSURE OF PROPRIETARY INFORMATION
This document contains proprietary information
which is the sole property of Werlatone, Inc.

REVISION HISTORY					
DATE	REV	REVISION RECORD	AUTH	CHK	APPV
4/4/11	-	INITIAL RELEASE	AK	BW	BW



UNLESS OTHERWISE SPECIFIED
 * INTERPRET DRAWING (AW MIL-STD-100
 * DIMENSIONING PER ASME Y14.5M-2009
 * PARENTHESES ARE FOR REF ONLY
 * DIMENSIONS ARE IN INCHES
 * DIMENSIONAL LIMITS APPLY BEFORE PROCESSES
 * TOLERANCES: ANGLES ± 2°
 .XXX ± .005
 .XX ± .01
 * HOLE TOLERANCES ± .004/.001
 * REMOVE ALL BURRS AND SHARP EDGES .01 R MAX
 * CONCENTRICITY MACHINED DIA. .002 FIM
 * MACHINE TOOL MISMATCH .003 MAX
 THIRD ANGLE PROJECTION

OWN	AK	DATE	4/4/2011	WERLATONE SINCE 1965		17 Jon Barrett Rd Patterson, NY 12563	
CHK	BW	DATE	4/4/2011	TITLE			
ENGR	BW	DATE	4/4/2011	OUTLINE			
MPGR		DATE		USED ON			
QA		DATE		SIZE	CAGE CODE	DWG NO	REV
RLSE		DATE		A	28812	10174 - 501	-
SCALE				1:1	SHEET 1 OF 1		

Restriction on use, duplication, or disclosure of proprietary information. This document contains proprietary information which is the sole property of Werlatone, Inc.
 Werlatone, Inc. 17 Jon Barrett Road Patterson, NY 12563 T:(845)278-2220 F:(845)278-3440 sales@werlatone.com www.werlatone.com