

PRODUCT DATA SHEET**C8657**

4-Port Dual Directional Coupler employs two, 3-Port Uni-Directional Couplers, internally connected, in tandem, providing measurement of both forward and reverse power. Ideal for simultaneously monitoring a system's forward and reverse power and for reflectometer measurements. Unlike the Bi-Directional Coupler, the directivity of the Dual Directional Coupler is unaffected by the loads on the coupled ports.

Features:

High Power Wide Bandwidths Small Size Flat Coupling Custom Designs Available

Electrical Specifications:

Frequency: 800 - 1000 MHz
Power: 500 W CW
Coupling: 30 ± 1.0 dB Max.
Insertion Loss: 0.15 dB Max.
Flatness: ± 0.5 dB Max.
VSWR (ML): 1.20:1 Max.
Directivity: 27 dB Min.

Mechanical Specifications:

Type: Non-Connectorized
Material: Aluminum 6061-T6
Surface Finish: Immersion Silver
Operating Temperature: -55°C to +75°C
Storage Temperature: -60°C to +85°C
Size: 1.40 x 1.10 x 0.13"

Port Configurations:

J1	J2	J3	J4
Input	Output	Forward	Reverse

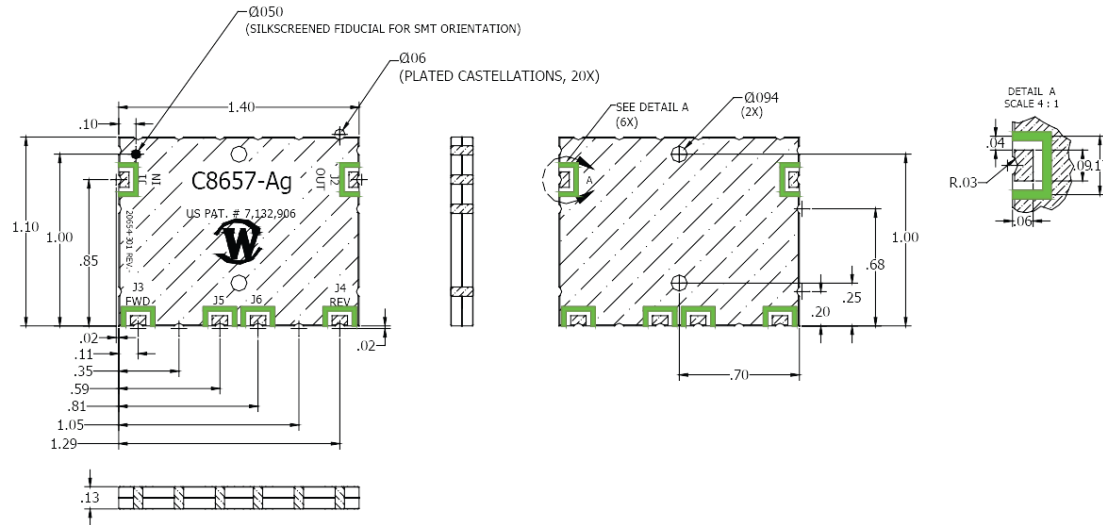
*Ports J5 & J6 Must be Terminated with 50 Ohms Externally.

Werlatone® Broadband Dual, Uni, and Bi Directional RF Couplers are designed to tolerate the most stringent operating conditions associated with military and EMC testing environments. Many of our RF Directional Couplers, designated Mismatch Tolerant®, will operate continuously, at rated power, into a severe load mismatch condition. Our multi-octave Directional Couplers maintain exceptional coupling flatness, directivity, VSWR, and insertion loss.

RESTRICTION ON USE, DUPLICATION OR DISCLOSURE OF PROPRIETARY INFORMATION

This document contains proprietary information which is the sole property of Werlatone, Inc.

REVISION HISTORY					
DATE	REV	REVISION RECORD	AUTH	CHK	APPV
4/8/2011	-	Initial Rls	NH	BW	BW



NOTES: UNLESS OTHERWISE SPECIFIED

1. SMT DEVICE
2. SURFACE FINISH: Immersion Silver (RoHS Compliant)
3. PORTS "J5" & "J6" NEEDS TO BE TERMINATED WITH 50 OHMS EXTERNALLY
4. HATCHED AREAS = METALLIZATION
5. GREEN SOLID AREAS = LPI SOLDER MASK

UNLESS OTHERWISE SPECIFIED		DWN	DATE	WERLATONE SINCE 1965		17 Jon Barrett Rd Patterson, NY 12563	
<ul style="list-style-type: none">• INTERPRET DRAWING IAW MIL-STD-100• DIMENSIONING PER ASME Y14.5M-2009• PARANTHETICAL INFO FOR REF ONLY• DIMENSIONS ARE IN INCHES• TOLERANCES: ANGLE ± 2° 3 PL DECIMALS ± .005 2 PL DECIMALS ± .015		CHK	NH	DATE	04/08/11	TITLE OUTLINE	
		ENGR	BW	DATE	04/08/11		
		QA	BW	DATE	04/08/11	USED ON C8657-Ag	
		RLSE		DATE			
				DATE		SIZE A	CAGE CODE 28812
THIRD ANGLE PROJECTION						DWG NO 20654-501	REV -
						SCALE	SHEET 1 OF 1

Restriction on use, duplication, or disclosure of proprietary information. This document contains proprietary information which is the sole property of Werlatone, Inc.
Werlatone, Inc. 17 Jon Barrett Road Patterson, NY 12563 T:(845)278-2220 F:(845)278-3440 sales@werlatone.com www.werlatone.com