



## PRODUCT DATA SHEET

WPM11316

### Instantaneous & Simultaneous

- Local and/or Remote Monitoring
- Forward Power Reading/Monitoring (Watts or dBm)
- Reverse Power Reading/Monitoring (Watts or dBm)
- VSWR Readings (Watts, Return Loss, Rho)

### VSWR Alarm

- Customer can set up audio/visual alarm via relay contacts.
- Signal sent to closed loop.

### Temperature Monitoring (with alarm)

- One sensor, internal measurement, within Power Meter.
- One sensor, external measurement, to be placed by customer.

### General Purpose Inputs (6 ea) Multiple Use

- Track switch closures (assign to interlock group).
- Trigger alarm relay (sends email alert).
- RF presence status/alarm (safety feature).
- Alarm, activated switch.

### Accessories:

- Single Channel and Multi-Channel Displays
- RF Digital Dashboard Spreadsheet Software, (Simultaneously Monitor Outputs of 30+ Power Meters)
- PC Based Graphical User Interface Windows XP/7/8/10 Compatible

### Accuracy:

- $\pm 2\%$  to Customer Calibration Standard, at preselected frequencies.
- $\pm 5\%$  over a Multi-Octave Bandwidth
- Werlatone Calibration Traceable to (NIST) National Institute of Standards and Technology

### Power:

- AC Power Adapter (100/240 50-60 Hertz V AC)
- POE (Passive Over Ethernet, Optional POE Injector Kit Available)
- Via RS485 (Via Single Channel or Multi-Channel Displays)

### Interface (Via):

- TCP/IP - SNMP and Browser Interface via Local Area Network
- RS232, Serial
- RS485 - Form Addressable Serial Network
- User ID and Password Protected for Access and Control
- Multiple units can be Networked and Simultaneously Monitored On-Site or Remotely (TCP/IP/SNMP/Serial)

RoHS Compliant Design Available  
Custom Connector Configurations Available

### Electrical Specifications:

Frequency: 2 - 50 MHz  
Power: 2,500 W CW

### Mechanical Specifications:

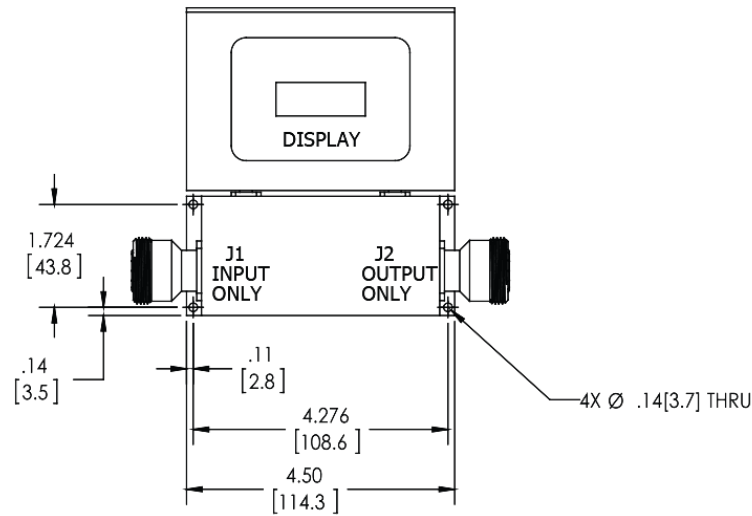
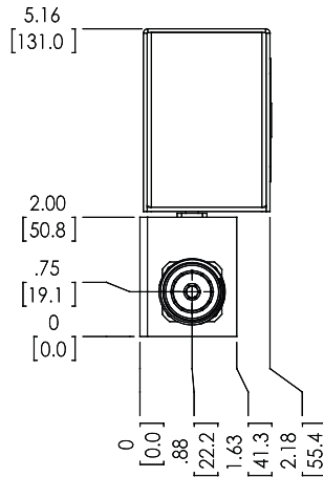
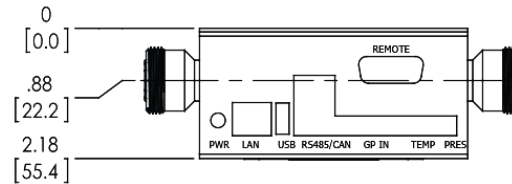
Type: Connectorized  
Operating Temperature: -55°C to +75°C  
Storage Temperature: -60°C to +85°C

### Connector Configurations:


Model	Input(J1)	Output(J2)
WPM11316-12	N Female	N Female
WPM11316-22	7/16 Female	7/16 Female

**RESTRICTION ON USE, DUPLICATION OR DISCLOSURE OF PROPRIETARY INFORMATION**  
This document contains proprietary information which is the sole property of Werlatone, Inc.

REVISION HISTORY			
REV.	REVISION RECORD	DATE	APPROVED
	PRE-RELEASE		



**PRELIMINARY DWG. SPECIFICATIONS MAY CHANGE PRIOR TO DWG RELEASE.**

		UNLESS OTHERWISE SPECIFIED		DWN	DATE	 <b>WERLATONE</b> SINCE 1965 17 Jon Barrett Rd Patterson, NY 12563
		• INTERPRET DRAWING UNW PLS-STD-000		PLP	3/28/2017	
		• DIMENSIONING PER ASME Y14.5M-2009		CHK	DATE	
		• PARENTHESES FOR REF ONLY		ENGR	DATE	
		• DIMENSIONS ARE IN INCHES (mm)		DATE	DATE	
		• DIMENSIONAL LIMITS APPLY BEFORE PROCESSES		DATE	DATE	<b>OUTLINE</b> SIZE CAGE CODE DWG NO <b>B 28812 21511-502</b> SCALE 1:2 SHEET 1 OF 1
		• TOLERANCES:		QA	DATE	
		ANGLES ± 2°		DATE	DATE	
		3 PL ± .005 (13)		DATE	DATE	
		2 PL ± .015 (4)		DATE	DATE	
		• REMOVE ALL BURRS AND SHARP EDGES 0.01 MAX		DATE	DATE	REV <b>P0</b>
		• CONCENTRICITY MACHINED DIA: .002 FIM		DATE	DATE	
		• MACHINE TOOL VIBRATION .003 MAX		DATE	DATE	
		THIRD ANGLE PROJECTION		DATE	DATE	
				DATE	DATE	
		APPLICATION				
		NEXT ASSY USED ON				
		WMP11071-22				

Restriction on use, duplication, or disclosure of proprietary information. This document contains proprietary information which is the sole property of Werlatone, Inc.  
Werlatone, Inc. 17 Jon Barrett Road Patterson, NY 12563 T:(845)278-2220 F:(845)278-3440 sales@werlatone.com www.werlatone.com