

PRODUCT DATA SHEET

WPM11343

Instantaneous & Simultaneous

- Local and/or Remote Monitoring
- Forward Power Reading/Monitoring (Watts or dBm)
- Reverse Power Reading/Monitoring (Watts or dBm)
- VSWR Readings (Watts, Return Loss, Rho)

VSWR Alarm

- Customer can set up audio/visual alarm via relay contacts.
- Signal sent to closed loop.

Temperature Monitoring (with alarm)

- One sensor, internal measurement, within Power Meter.
- One sensor, external measurement, to be placed by customer.

General Purpose Inputs (6 ea) Multiple Use

- Track switch closures (assign to interlock group).
- Trigger alarm relay (sends email alert).
- RF presence status/alarm (safety feature).
- Alarm, activated switch.

Accessories:

- Single Channel and Multi-Channel Displays
- RF Digital Dashboard Spreadsheet Software, (Simultaneously Monitor Outputs of 30+ Power Meters)
- PC Based Graphical User Interface Windows XP/7/8/10 Compatible

Accuracy:

- $\pm 2\%$ to Customer Calibration Standard, at preselected frequencies.
- $\pm 5\%$ over a Multi-Octave Bandwidth
- Werlatone Calibration Traceable to (NIST) National Institute of Standards and Technology

Power:

- AC Power Adapter (100/240 50-60 Hertz V AC)
- POE (Passive Over Ethernet, Optional POE Injector Kit Available)
- Via RS485 (Via Single Channel or Multi-Channel Displays)

Interface (Via):

- TCP/IP - SNMP and Browser Interface via Local Area Network
- RS232, Serial
- RS485 - Form Addressable Serial Network
- User ID and Password Protected for Access and Control
- Multiple units can be Networked and Simultaneously Monitored On-Site or Remotely (TCP/IP/SNMP/Serial)

RoHS Compliant Design Available Custom Connector Configurations Available

Electrical Specifications:

Frequency: 20 - 520 MHz
Power: 1000 W CW

Mechanical Specifications:

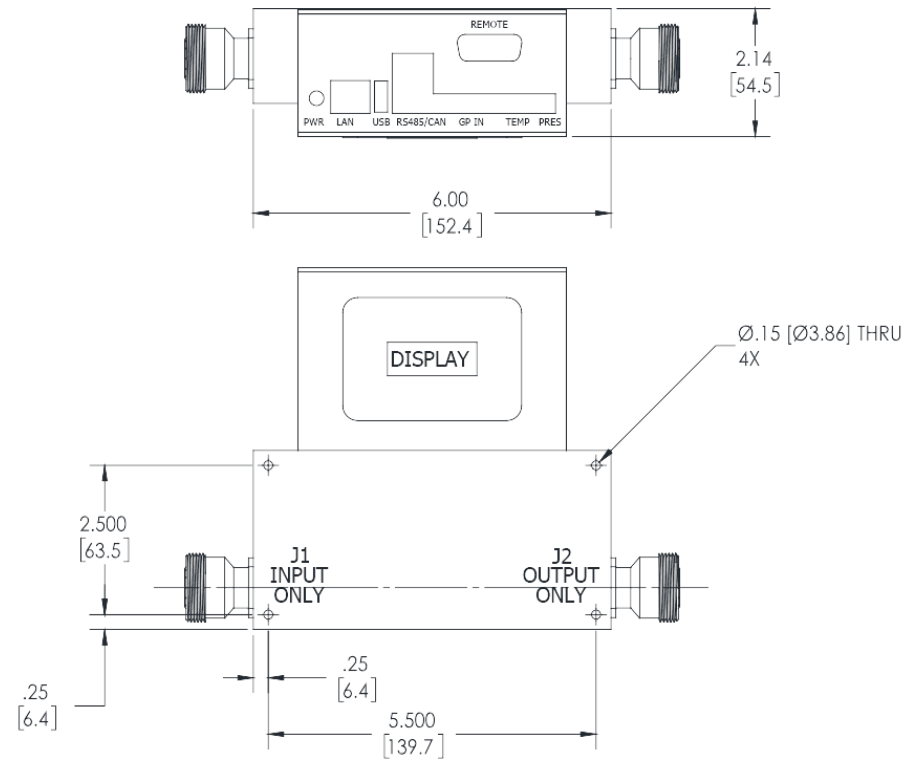
Type: Connectorized
Operating Temperature: -55°C to +75°C
Storage Temperature: -60°C to +85°C

Connector Configurations:

Model	Input(J1)	Output(J2)
WPM11343-12	N Female	N Female
WPM11343-712	N Male	N Female
WPM11343-22	7/16 Female	7/16 Female

RESTRICTION ON USE, DUPLICATION OR DISCLOSURE OF PROPRIETARY INFORMATION
This document contains proprietary information which is the sole property of Werlatone, Inc.

REVISION HISTORY			
REV.	REVISION RECORD	DATE	APPROVED
-	INITIAL RELEASE	10/15/2018	CS



NOTES: UNLESS OTHERWISE SPECIFIED

1. CONNECTORS: J1- J2: 7-16 (FEMALE)

		<div>• UNLESS OTHERWISE SPECIFIED</div> <div><div><div>• INTERPRET DRAWING BY ME: STD-100</div><div>• CONFORMING PER ASME Y14.3M-2000</div><div>• MATHEMATICAL INFO FOR REF ONLY</div><div>• DIMENSIONS ARE IN BRACKETS [mm]</div><div>• DIMENSIONAL LIMITS APPLY BEFORE PROCESSING</div><div>• TOLERANCES:<div>ANGLES ± 5°</div><div>3 H = .005 [13]</div><div>2 H = .015 [1]</div></div></div><div><div>• REMOVE ALL BURRS AND SHARP EDGES R & L MAX</div><div>• CONCENTRICITY MAXIMUM DIA. .002 FIM</div><div>• MACHINE TOOL MACHINED .002 MAX</div></div></div>		<div>IOWN</div> <div>PLP</div> <div>DATE</div> <div>9/27/2018</div> <div>CLK</div> <div>DATE</div> <div>10/15/2018</div> <div>DYGR</div> <div>DATE</div> <div>NFGK</div> <div>DATE</div> <div>QA</div> <div>DATE</div> <div>RLSE</div> <div>DATE</div>	<div><div><div><div></div></div><div>WERLATON</div><div>SINCE 1965</div></div></div>	17 Jon Barrett Rd Patterson, NY 12563
NEXT ASSY WPM11376 USED ON				<div>TITLE</div> <div>OUTLINE</div> <div>SIZE</div> <div>CAGE CODE</div> <div>DWG NO</div> <div>B2812</div> <div>21651-500</div>		REV -
APPLICATION		THIRD ANGLE PROJECTION		SCALE	1:2	SHEET 1 OF 1

Restriction on use, duplication, or disclosure of proprietary information. This document contains proprietary information which is the sole property of Werlatone, Inc.
Werlatone, Inc. 17 Jon Barrett Road Patterson, NY 12563 T:(845)278-2220 F:(845)278-3440 sales@werlatone.com www.werlatone.com