
PRODUCT DATA SHEET
C10292

4-Port Dual Directional Coupler employs two, 3-Port Uni-Directional Couplers, internally connected, in tandem, providing measurement of both forward and reverse power. Ideal for simultaneously monitoring a system's forward and reverse power and for reflectometer measurements. Unlike the Bi-Directional Coupler, the directivity of the Dual Directional Coupler is unaffected by the loads on the coupled ports.

Features:

High Power Wide Bandwidths Small Size Flat Coupling Custom Designs Available

Electrical Specifications:

Frequency: 800 - 3000 MHz
Power: 200 W CW
Coupling: 50 ± 1.0 dB Max.
Insertion Loss: 0.2 dB Max.
Flatness: ± 0.75 dB Max.
VSWR (ML): 1.30:1 Max.
Directivity: 20 dB Min.

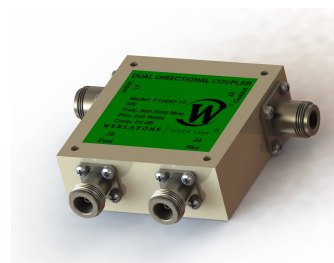
Mechanical Specifications:

Type: Connectorized
Material: Aluminum 6061-T6
Surface Finish: Chem. Film Per MIL-DTL-5541F
Type I Class 3 (Yellow Iridite)
RoHS Compliant Available
Operating Temperature: -55°C to +75°C
Storage Temperature: -60°C to +85°C
Humidity: 95% Non-Condensing
Size: 3.0 x 3.0 x 1.09"

Connector Configurations:

Model	Input (J1)	Output (J2)	Fwd (J3)	Rev (J4)
C10292-10	N Female	N Female	N Female	N Female
C10292-12	N Female	N Female	SMA	SMA
C10292-13	N Female	N Female	BNC	BNC
C10292-20*	7/16 Female	7/16 Female	N Female	N Female
C10292-22*	7/16 Female	7/16 Female	SMA	SMA
C10292-23*	7/16 Female	7/16 Female	BNC	BNC
C10292-610	N Female	N Male	N Female	N Female
C10292-627*	7/16 Female	7/16 Male	N Female	N Female
C10292-727*	7/16 Male	7/16 Female	N Female	N Female
C10292-728*	7/16 Male	7/16 Female	SMA	SMA

*Starred Options are 3.0 x 3.0 x 1.59"

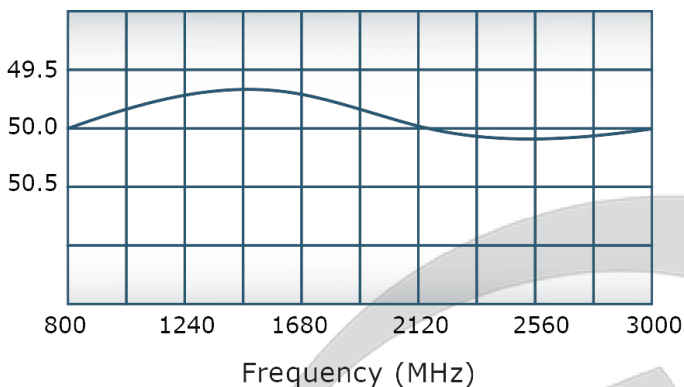


PRODUCT DATA SHEET

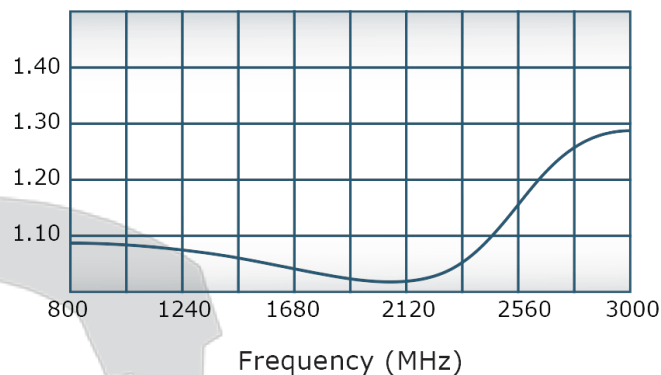
C10292

Performance Data (Specifications subject to change without notice):

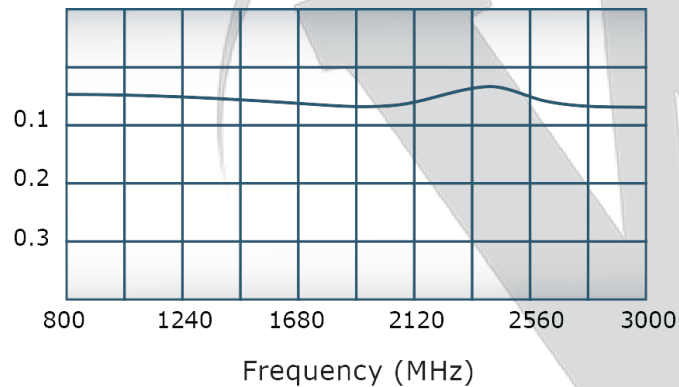
Coupling:



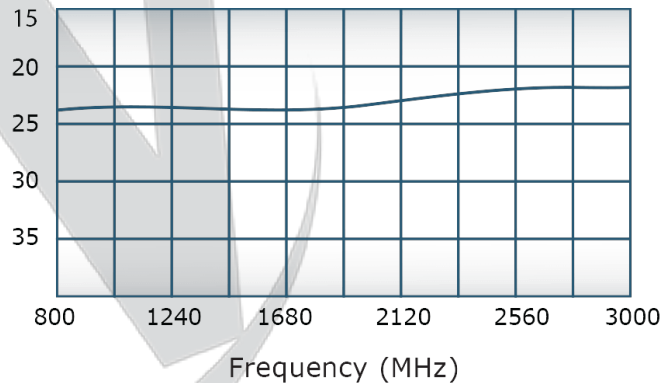
VSWR:



Insertion Loss:



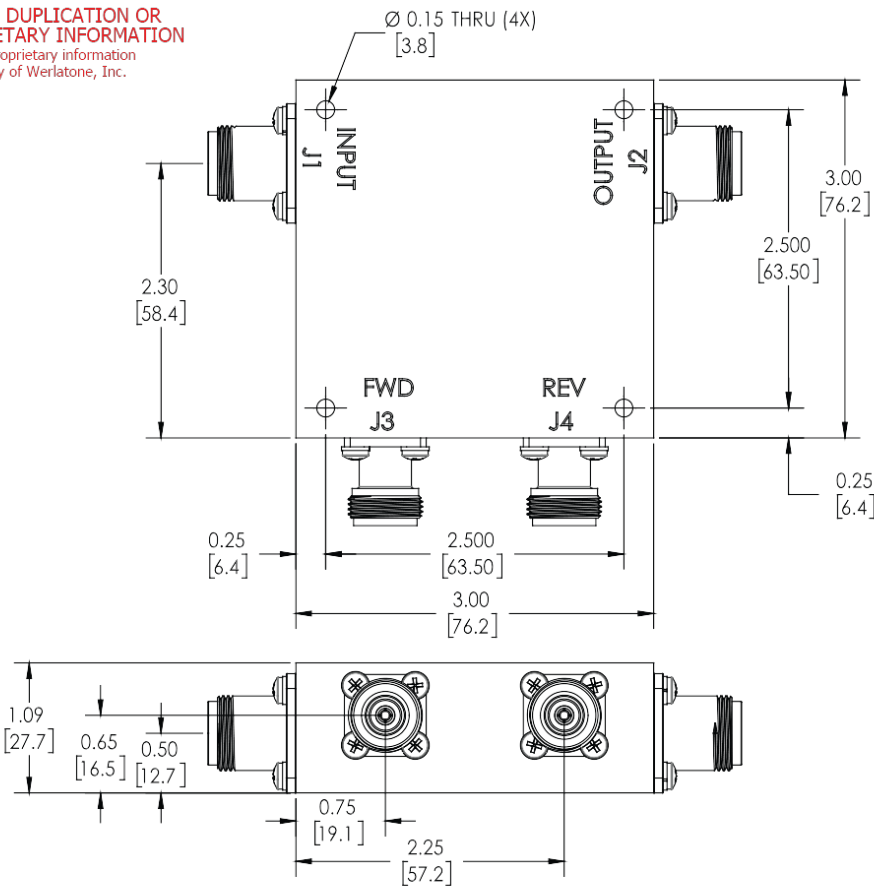
Directivity:



Restriction on use, duplication, or disclosure of proprietary information. This document contains proprietary information which is the sole property of Werlatone, Inc.

Werlatone, Inc. 17 Jon Barrett Road Patterson, NY 12563 T:(845)278-2220 F:(845)278-3440 sales@werlatone.com www.werlatone.com

RESTRICTION ON USE, DUPLICATION OR DISCLOSURE OF PROPRIETARY INFORMATION
This document contains proprietary information which is the sole property of Werlatone, Inc.



REVISION HISTORY			
REV.	REVISION RECORD	DATE	APPROVED
A	ECN 9696	11/27/18	RB

NOTES: UNLESS OTHERWISE SPECIFIED

- MATERIAL: ALUMINUM 6061-T6**
- FINISH: CHEM FILM PER MIL-DTL_5541F TYPE I CLASS 3 (YELLOW IRIDITE)**

		UNLESS OTHERWISE SPECIFIED		OWN	DATE	WERLATONE SINCE 1965 17 Jon Barrett Rd Patterson, NY 12563
		• INTERPRET DRAWING JAW MIL-STD-100		RH	7/5/2001	
		• DIMENSIONING PER ASME Y14.5M-2009		CHK	DATE	OUTLINE SIZE: B CAGE CODE: 10379-505 DWG NO: 10379-505 REV: A
		• PARENTHETICAL INFO FOR REF ONLY		ENGR	DATE	
		• DIMENSIONS ARE IN INCHES		MJ	7/5/2001	SCALE: 1:1 SHEET 1 OF 1
		• DIMENSIONAL LIMITS APPLY BEFORE PROCESSES		MPGR	DATE	
		• TOLERANCES:		QA	DATE	THIRD ANGLE PROJECTION
		ANGLES: ± 2°		BLSE	DATE	
		2 PL. ± .005 [1.3]				
		2 PL. ± .015 [3.8]				
		• REMOVE ALL BURRS AND SHARP EDGES R.01 MAX				
		• CONCENTRICITY MACHINED DIA: .002 FIM				
		• MACHINE TOOL MISMATCH: .003 MAX				
NEXT ASSY	USED ON					
APPLICATION						

Restriction on use, duplication, or disclosure of proprietary information. This document contains proprietary information which is the sole property of Werlatone, Inc.
Werlatone, Inc. 17 Jon Barrett Road Patterson, NY 12563 T:(845)278-2220 F:(845)278-3440 sales@werlatone.com www.werlatone.com