
PRODUCT DATA SHEET
C10561

4-Port Dual Directional Coupler employs two, 3-Port Uni-Directional Couplers, internally connected, in tandem, providing measurement of both forward and reverse power. Ideal for simultaneously monitoring a system's forward and reverse power and for reflectometer measurements. Unlike the Bi-Directional Coupler, the directivity of the Dual Directional Coupler is unaffected by the loads on the coupled ports.

Features:

High Power Wide Bandwidths Small Size Flat Coupling Custom Designs Available

Electrical Specifications:

Frequency: 20 - 1000 MHz
 Power: 250 W CW
 Coupling: 50 ± 1.0 dB Max.
 Insertion Loss: 0.1 dB Max.
 Flatness: ± 0.6 dB Max.
 VSWR (ML): 1.25:1 Max.
 Directivity: 20 dB Min.

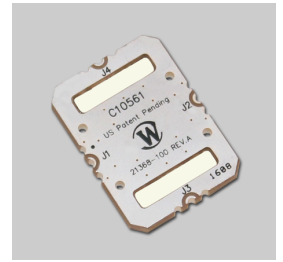
Mechanical Specifications:

Type: Connectorized
 Material: Aluminum 6061-T6
 Surface Finish: Immersion Silver
 Operating Temperature: -55°C to +75°C
 Storage Temperature: -60°C to +85°C
 Size: 1.35 x 1.0 x 0.15"

Port Configurations:

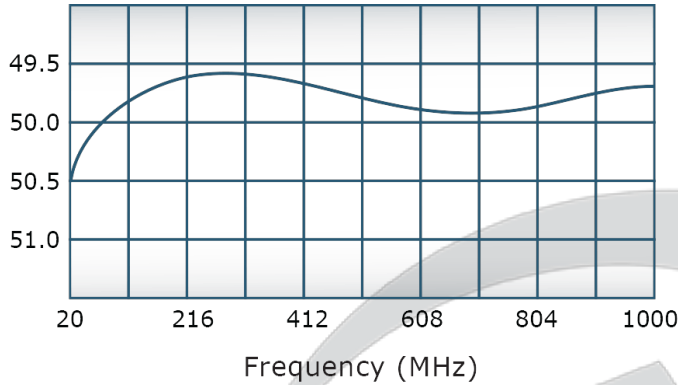
| | | | |
|-----------|-----------|-----------|-----------|
| J1 | J2 | J3 | J4 |
| Input | Output | Forward | Reverse |

Werlatone® Broadband Dual, Uni, and Bi Directional RF Couplers are designed to tolerate the most stringent operating conditions associated with military and EMC testing environments. Many of our RF Directional Couplers, designated Mismatch Tolerant®, will operate continuously, at rated power, into a severe load mismatch condition. Our multi-octave Directional Couplers maintain exceptional coupling flatness, directivity, VSWR, and insertion loss.

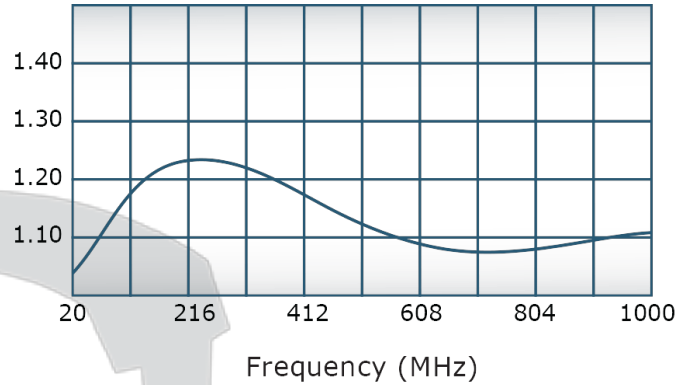


Performance Data (Specifications subject to change without notice):

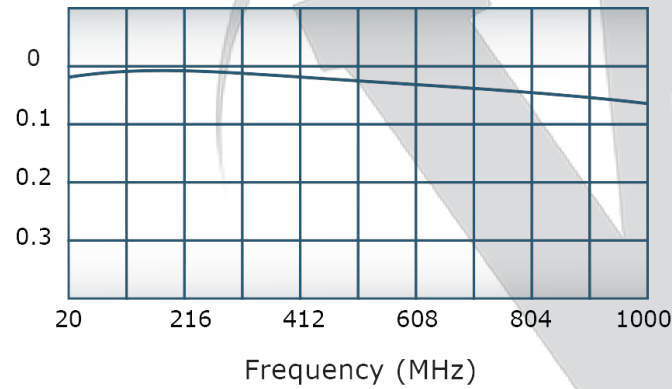
Coupling:



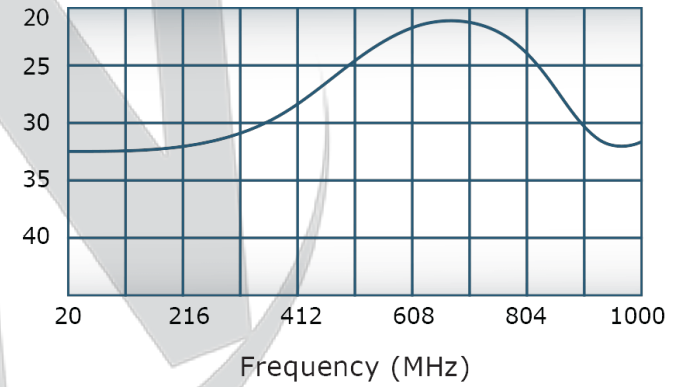
VSWR:



Insertion Loss:

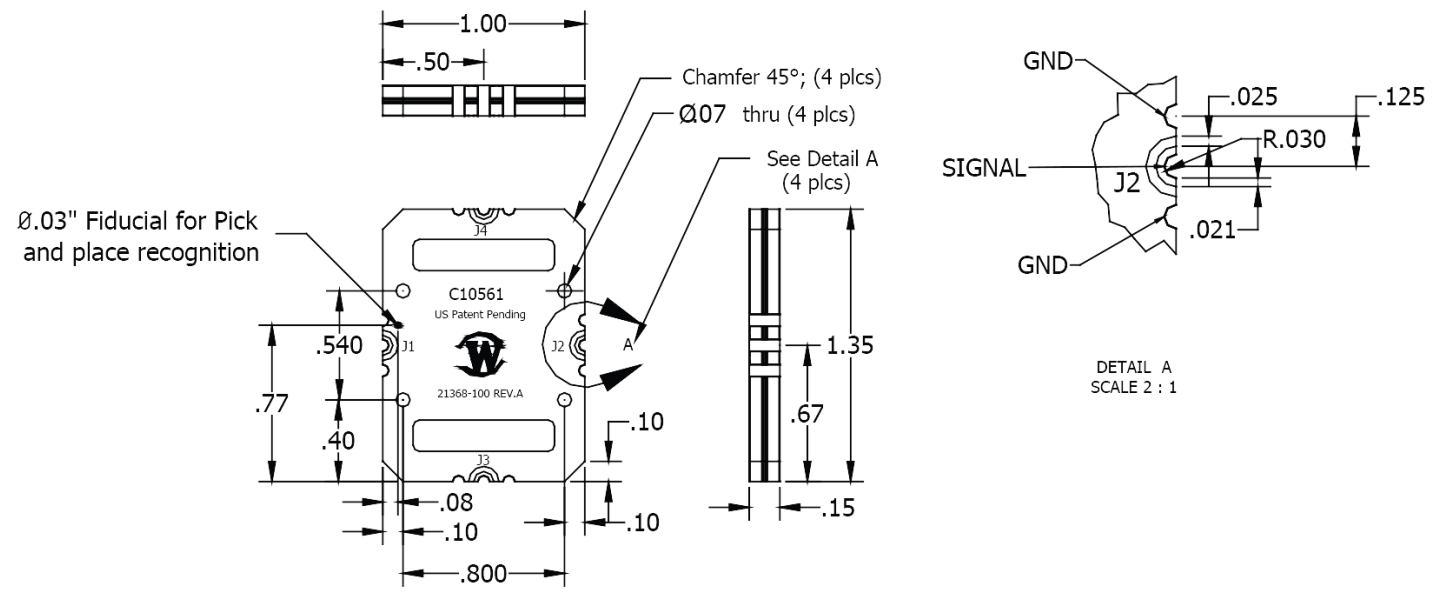


Directivity:



RESTRICTION ON USE, DUPLICATION OR DISCLOSURE OF PROPRIETARY INFORMATION
 This document contains proprietary information which is the sole property of Werlatone, Inc.

| REVISION HISTORY | | | |
|------------------|-----------------|------------|----------|
| REV | REVISION RECORD | DATE | APPROVED |
| - | Initial Rls | 11/12/2015 | BW |
| A | ECN 9008 | 1/14/16 | BW |
| B | ECN 9017 | 1/21/16 | BW |



NOTES: UNLESS OTHERWISE SPECIFIED

1. Surface Mount Unit
2. Finish: Immersion Silver
3. RoHS Compliant
4. Port Configurations: J1 : INPUT
J2 : OUTPUT
J3 : FORWARD
J4 : REVERSE

| | | | | | | | | |
|-----------|--|-------------|--|---|------|----------|------|---|
| 21368-300 | | C10561 | | UNLESS OTHERWISE SPECIFIED | | DWN | DATE | WERLATONE SINCE 1965 17 Jon Barrett Rd Patterson, NY 12563 |
| NEXT ASSY | | USED ON | | • INTERPRET DRAWING IAW MIL-STD-100 | NH | 11/12/15 | | |
| | | APPLICATION | | • DIMENSIONING PER ASME Y14.8M-2009 | CHK | DATE | | TITLE |
| | | | | • PARENTHESES INFO FOR REF ONLY | BW | 11/12/15 | | Outline |
| | | | | • DIMENSIONS ARE IN INCHES | ENGR | DATE | | SIZE |
| | | | | • DIMENSIONAL LIMITS APPLY BEFORE PROCESSES | NH | 11/12/15 | | CAGE CODE |
| | | | | • TOLERANCES: ANGLES = 2° | MFGR | DATE | | DWG NO |
| | | | | 1 PL = .005 | QA | DATE | | 21368-500 |
| | | | | 2 PL = .015 | RLSE | DATE | | REV |
| | | | | | | | | B |
| | | | | | | | | SCALE |
| | | | | | | | | 1:1 |
| | | | | | | | | SHEET 1 OF 1 |

Restriction on use, duplication, or disclosure of proprietary information. This document contains proprietary information which is the sole property of Werlatone, Inc. Werlatone, Inc. 17 Jon Barrett Road Patterson, NY 12563 T:(845)278-2220 F:(845)278-3440 sales@werlatone.com www.werlatone.com