
PRODUCT DATA SHEET
C2541

Non-Isolated Uneven Splitters (Taps): Utilized to un-evenly split a single run of 50 Ohm coaxial cable, hosting multiple frequency bands, so that a shorter corridor, tunnel, shaft, or hallway is provided a lesser portion of power on the main coaxial run than that required by a longer run. Non-Isolated Uneven Splitters are Bi-Directional, and unlike Directional Couplers, all ports can communicate with one another.

Features:

High Power Wide Bandwidths Small Size Flat Coupling Custom Designs Available

Electrical Specifications:

Frequency: 120 - 470 MHz
Power: 100 W CW
Coupling: 10 ± 1.0 dB Max.
Insertion Loss: 0.75 dB Max.
Flatness: ± 1.0 dB Max.
VSWR (ML): 1.30:1 Max.

Mechanical Specifications:

Type: Connectorized
Material: Aluminum 6061-T6
Surface Finish: Chem. Film Per MIL-DTL-5541F
Type I Class 3 (Yellow Iridite)
RoHS Compliant Available
Operating Temperature: -55°C to +75°C
Storage Temperature: -60°C to +85°C
Humidity: 95% Non-Condensing
Size: 2.5 x 1.75 x 1.5"
Weight: 7 ounces

Connector Configurations:

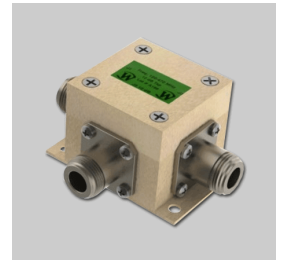
Model	Input (J1)	Output (J2)	Fwd (J3)
C2541-10	N Female	N Female	N Female

Werlatone® Broadband Non-Isolated Uneven Splitters (Taps) are designed to tolerate the most stringent operating conditions associated with Distributive Antenna Systems (DAS).



WERLATONE

Model C2541

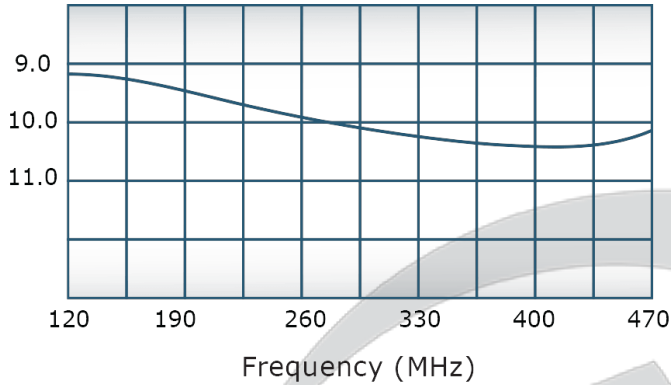


PRODUCT DATA SHEET

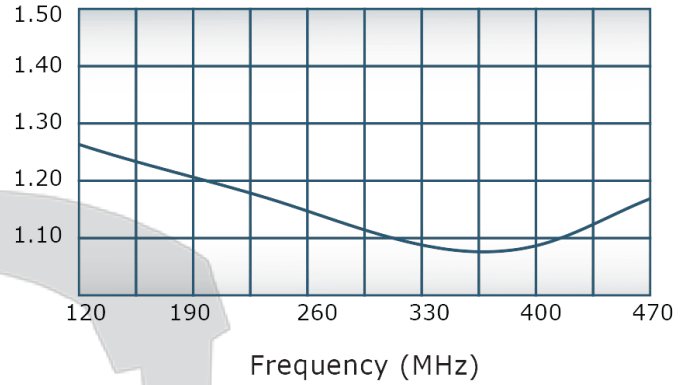
C2541

Performance Data (Specifications subject to change without notice):

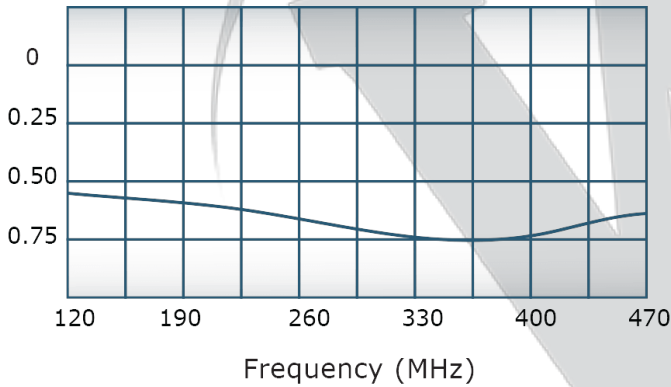
Coupling:



VSWR:



Insertion Loss:



For In-Building Applications

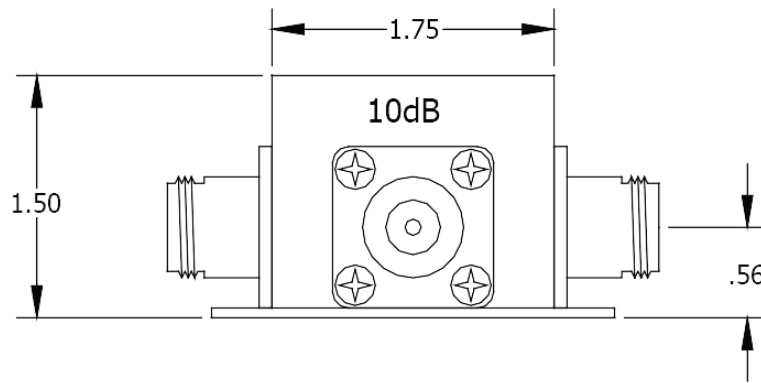
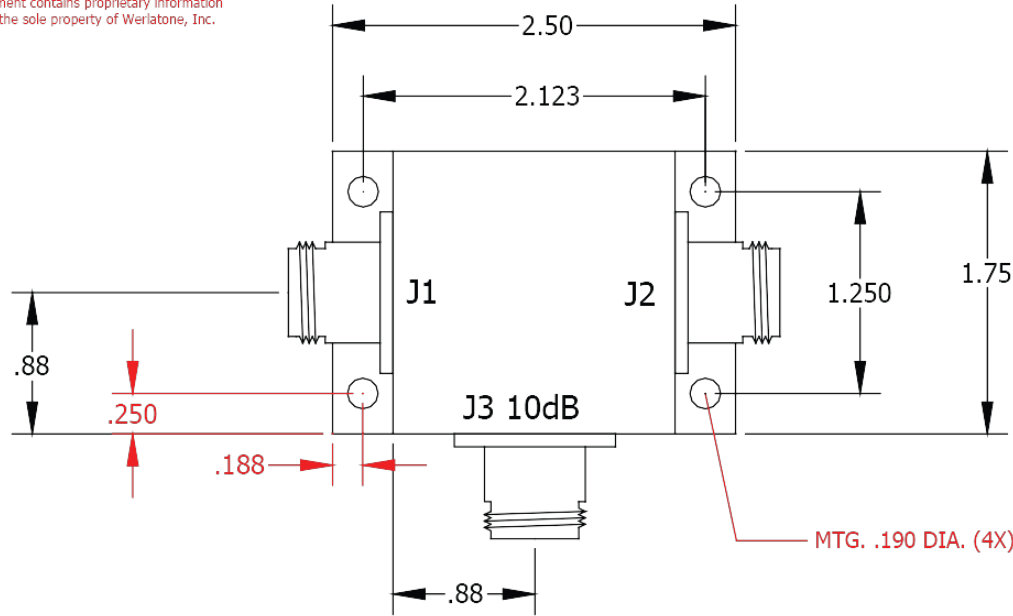


Restriction on use, duplication, or disclosure of proprietary information. This document contains proprietary information which is the sole property of Werlatone, Inc.


Werlatone, Inc. 17 Jon Barrett Road Patterson, NY 12563 T:(845)278-2220 F:(845)278-3440 sales@werlatone.com www.werlatone.com

RESTRICTION ON USE, DUPLICATION OR
DISCLOSURE OF PROPRIETARY INFORMATION
This document contains proprietary information
which is the sole property of Werlatone, Inc.

REVISION HISTORY					
DATE	REV	REVISION RECORD	AUTH	CHK	APPV
4/4/11	-	INITIAL RELEASE	AK	BW	BW



UNLESS OTHERWISE SPECIFIED
* INTERPRET DRAWING (AW MIL-STD-100)
* DIMENSIONING PER ASME Y14.5M-2009
* PARENTHESES FOR REF ONLY
* DIMENSIONS ARE IN INCHES
* DIMENSIONAL LIMITS APPLY BEFORE PROCESSES
* TOLERANCES: ANGLES ± 2°
 XXX ± .005
 XX ± .01
* HOLE TOLERANCES ± .004/- .001
* REMOVE ALL BURRS AND SHARP EDGES .01 R MAX
* CONCENTRICITY MACHINED DIA. .002 FIM
* MACHINE TOOL HATCH .003 MAX
THIRD ANGLE PROJECTION

OWN	AK	DATE	4/4/2011	 WERLATONE SINCE 1965	17 Jon Barrett Rd Patterson, NY 12563	
CHK	BW	DATE	4/4/2011			
ENGR	BW	DATE	4/4/2011			
PPGR		DATE				
				TITLE		
				OUTLINE		
				USED ON		
QA		DATE		SIZE	CAGE CODE	DWG NO
PLSE		DATE		A	28812	10174 - 501
				SCALE	1:1	SHEET 1 OF 1
						REV
						-

Restriction on use, duplication, or disclosure of proprietary information. This document contains proprietary information which is the sole property of Werlatone, Inc.
Werlatone, Inc. 17 Jon Barrett Road Patterson, NY 12563 T:(845)278-2220 F:(845)278-3440 sales@werlatone.com www.werlatone.com