


PRODUCT DATA SHEET
C5070

4-Port Dual Directional Coupler employs two, 3-Port Uni-Directional Couplers, internally connected, in tandem, providing measurement of both forward and reverse power. Ideal for simultaneously monitoring a system's forward and reverse power and for reflectometer measurements. Unlike the Bi-Directional Coupler, the directivity of the Dual Directional Coupler is unaffected by the loads on the coupled ports.

Features:

High Power Wide Bandwidths Small Size Flat Coupling Custom Designs Available

Electrical Specifications:

Frequency: 800 - 2800 MHz
Power: 1500 W CW
Coupling: 50 ± 1.0 dB Max.
Flatness: ± 0.75 dB Max.
Insertion Loss: 0.2 dB Max.
VSWR (ML): 1.30:1 Max.
Directivity: 20 dB Min.

Mechanical Specifications:

Type: Connectorized
Material: Aluminum 6061-T6
Surface Finish: Chem. Film Per MIL-DTL-5541F
Type I Class 3 (Yellow Iridite)
RoHS Compliant Available
Operating Temperature: -55°C to +75°C
Storage Temperature: -60°C to +85°C
Humidity: 95% Non-Condensing
Size: 3.0 x 3.0 x 1.09"

Connector Configurations:

Model	Input (J1)	Output (J2)	Fwd (J3)	Rev (J4)
C5070-10	N Female	N Female	N Female	N Female
C5070-12	N Female	N Female	SMA	SMA
C5070-13	N Female	N Female	BNC	BNC
C5070-20*	7/16 Female	7/16 Female	N Female	N Female
C5070-22*	7/16 Female	7/16 Female	SMA	SMA
C5070-41	SC Female	SC Female	N Female	N Female
C5070-43	SC Female	SC Female	SMA	SMA
C5070-71*	7/8" EIA	7/8" EIA	N Female	N Female
C5070-627*	7/16 Female	7/16 Male	N Female	N Female
C5070-714	N Male	N Female	N Female	N Female
C5070-727*	7/16 Male	7/16 Female	N Female	N Female
C5070-741	SC Male	SC Female	N Female	N Female

*Starred options are 3.0 x 3.0 x 1.59"

Restriction on use, duplication, or disclosure of proprietary information. This document contains proprietary information which is the sole property of Werlatone, Inc.

Werlatone, Inc. 17 Jon Barrett Road Patterson, NY 12563 T:(845)278-2220 F:(845)278-3440 sales@werlatone.com www.werlatone.com



WERLATONE

Model C5070

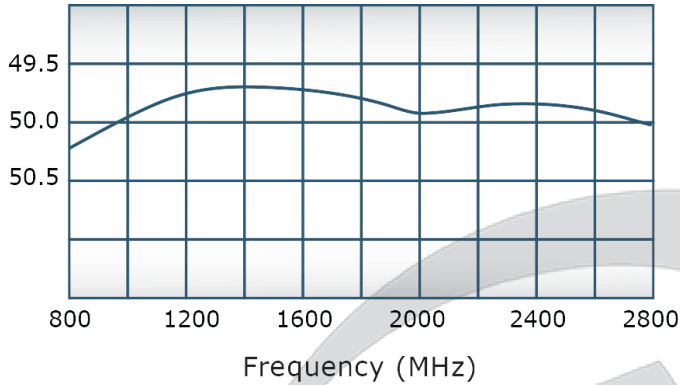


PRODUCT DATA SHEET

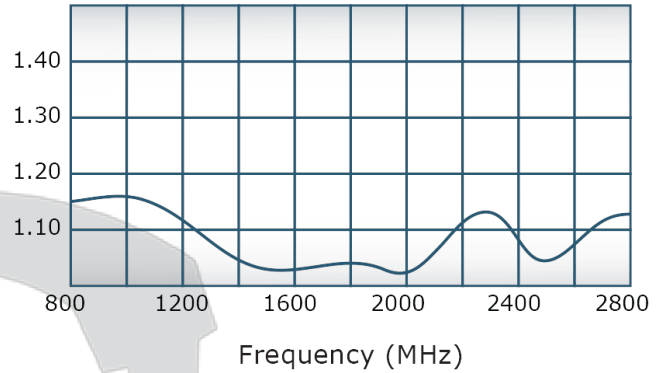
C5070

Performance Data (Specifications subject to change without notice):

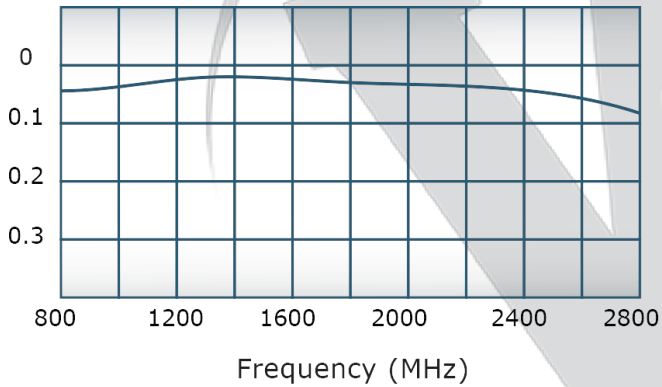
Coupling:



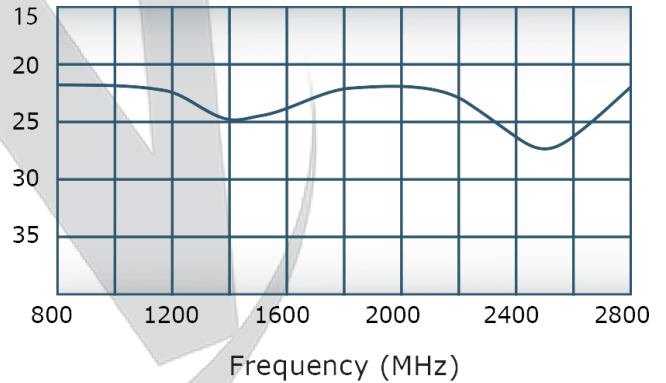
VSWR:



Insertion Loss:

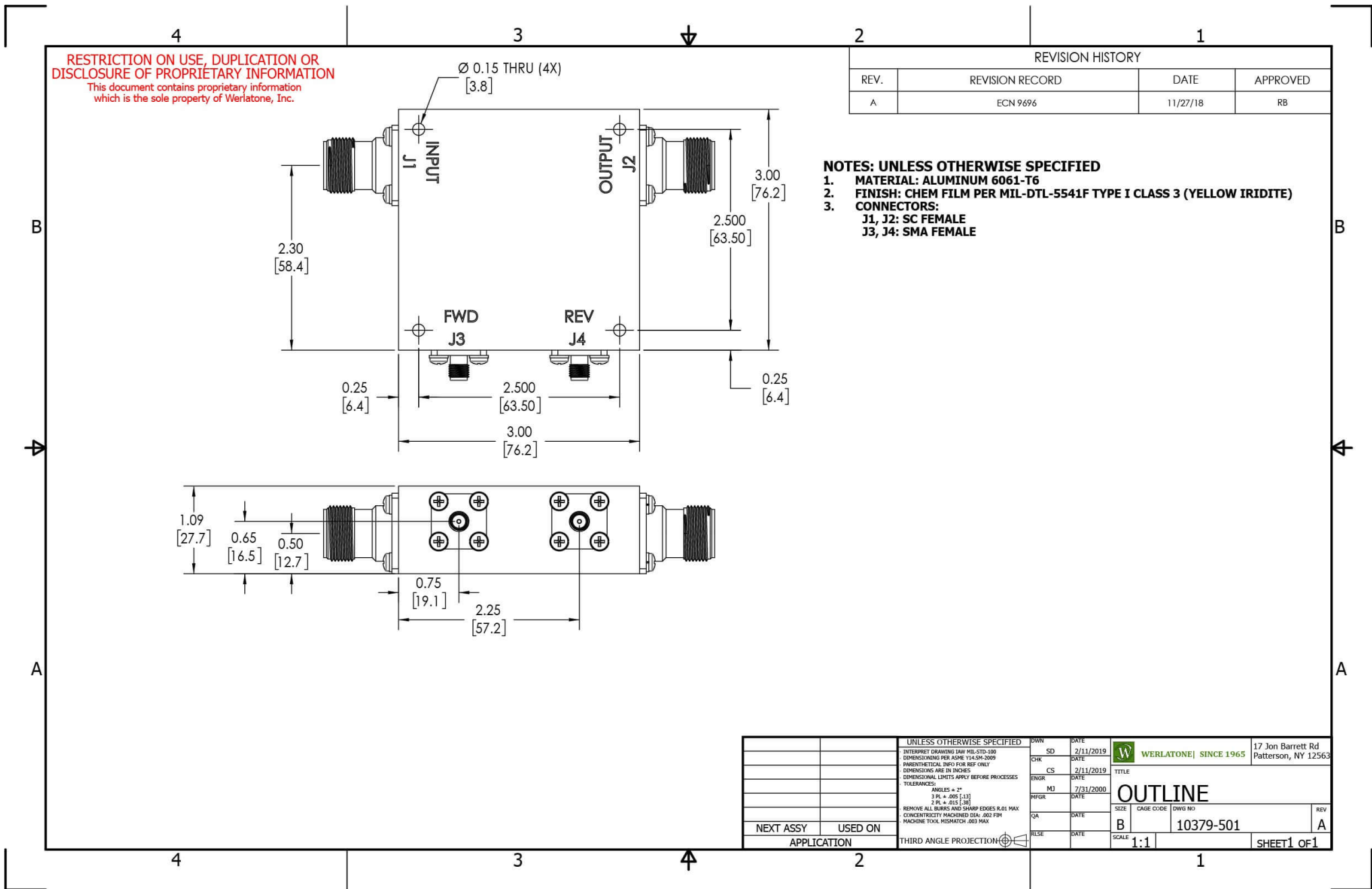


Directivity:



Restriction on use, duplication, or disclosure of proprietary information. This document contains proprietary information which is the sole property of Werlatone, Inc.

Werlatone, Inc. 17 Jon Barrett Road Patterson, NY 12563 T:(845)278-2220 F:(845)278-3440 sales@werlatone.com www.werlatone.com



Restriction on use, duplication, or disclosure of proprietary information. This document contains proprietary information which is the sole property of Werlatone, Inc.
Werlatone, Inc. 17 Jon Barrett Road Patterson, NY 12563 T:(845)278-2220 F:(845)278-3440 sales@werlatone.com www.werlatone.com