
**PRODUCT DATA SHEET**
**C5263**

**4-Port Dual Directional Coupler** employs two, 3-Port Uni-Directional Couplers, internally connected, in tandem, providing measurement of both forward and reverse power. Ideal for simultaneously monitoring a system's forward and reverse power and for reflectometer measurements. Unlike the Bi-Directional Coupler, the directivity of the Dual Directional Coupler is unaffected by the loads on the coupled ports.

**Features:**

High Power      Wide Bandwidths      Small Size      Flat Coupling      Custom Designs Available

**Electrical Specifications:**

Frequency: 80 -220 MHz  
Power: 3000 W CW  
Coupling: 50 ± 1.0 dB Max.  
Insertion Loss: 0.1 dB Max.  
Flatness: ± 0.5 dB Max.  
VSWR (ML): 1.10:1 Max.  
Directivity: 20 dB Min.

**Mechanical Specifications:**

Type: Connectorized  
Material: Aluminum 6061-T6  
Surface Finish: Chem. Film Per MIL-DTL-5541F  
Type I Class 3 (Yellow Iridite)  
RoHS Compliant Available  
Operating Temperature: -55°C to +75°C  
Storage Temperature: -60°C to +85°C  
Humidity: 95% Non-Condensing  
Size: 3.0 x 3.0 x 1.09"

**Connector Configurations:**

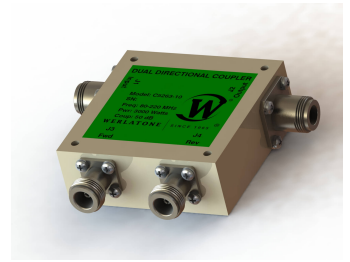
Model	Input (J1)	Output (J2)	Fwd (J3)	Rev (J4)
C5263-10	N Female	N Female	N Female	N Female
C5263-12	N Female	N Female	SMA	SMA
C5263-20*	7/16 Female	7/16 Female	N Female	N Female
C5263-22*	7/16 Female	7/16 Female	SMA	SMA
C5263-23*	7/16 Female	7/16 Female	BNC	BNC
C5263-43	SC Female	SC Female	SMA	SMA
C5263-627*	7/16 Female	7/16 Male	N Female	N Female
C5263-727*	7/16 Male	7/16 Female	N Female	N Female
C5263-728*	7/16 Male	7/16 Female	SMA	SMA

\*Starred options are 3.0 x 3.0 x 1.59"



# WERLATONE

Model C5263

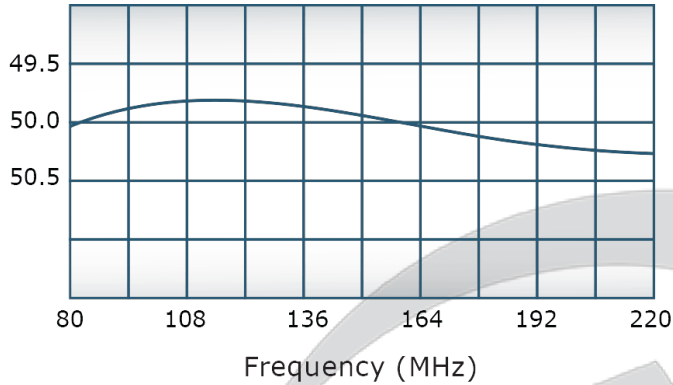


## PRODUCT DATA SHEET

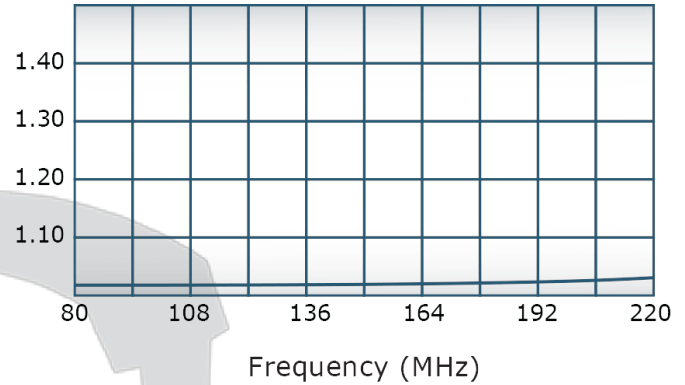
C5263

### Performance Data (Specifications subject to change without notice):

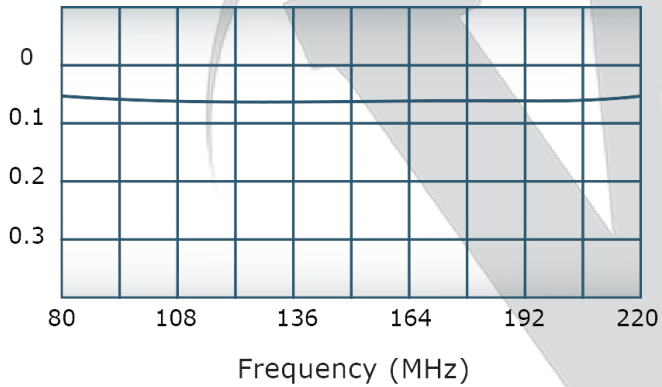
Coupling:



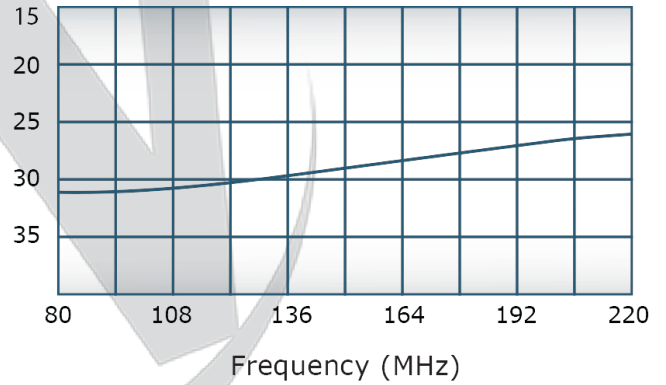
VSWR:



Insertion Loss:



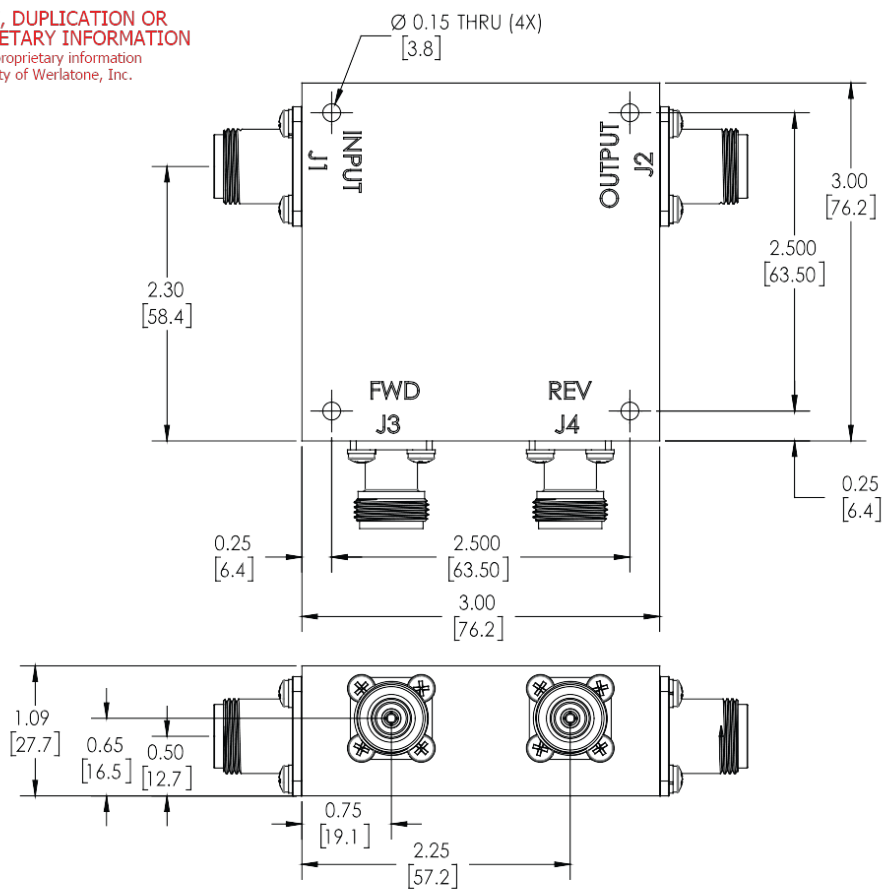
Directivity:



**Restriction on use, duplication, or disclosure of proprietary information.** This document contains proprietary information which is the sole property of Werlatone, Inc.

Werlatone, Inc. 17 Jon Barrett Road Patterson, NY 12563 T:(845)278-2220 F:(845)278-3440 sales@werlatone.com www.werlatone.com

**RESTRICTION ON USE, DUPLICATION OR DISCLOSURE OF PROPRIETARY INFORMATION**  
This document contains proprietary information which is the sole property of Werlatone, Inc.






## REVISION HISTORY

REV.	REVISION RECORD	DATE	APPROVED
A	ECN 9696	11/27/18	RB

**NOTES: UNLESS OTHERWISE SPECIFIED**

1. MATERIAL: ALUMINUM 6061-T6  
2. FINISH: CHEM FILM PER MIL-DTL-5541F TYPE I CLASS 3 (YELLOW IRIDITE)

		UNLESS OTHERWISE SPECIFIED		OWN	DATE	 WERLATONE® SINCE 1965	17 Jon Barrett Rd Patterson, NY 12568		
		• INTERPRET DRAWING AS PER: STD-100 • DIMENSIONING PER ASME Y14.5-2009 • ARCHITECTURAL INFO FOR KEY ONLY • DIMENSIONS ARE IN INCHES • DIMENSIONAL LIMITS APPLY BEFORE PROCESSES • TOLERANCES: ANGLES ± 2° 2 P. ± .002 [13] 3 P. ± .005 [38] • REMOVE ALL BURS AND SHARP EDGES R.25 MIN • CONCENTRICITY MACHINED DIA. ±.002 FIM • MACHINE TOOL REGISTRATION ±.002 FIM		RH	7/5/2001		 WERLATONE® SINCE 1965		
				CHK	DATE				
				ENGR	DATE				
				RFGR	7/5/2001				
				QA	DATE				
NEXT ASSY		USED ON				OUTLINE SIZE CAGE CODE DWG NO 10379-505			
APPLICATION		THIRD ANGLE PROJECTION 		SCALE	DATE	B 1:1		SHEET 1 OF 1	

**Restriction on use, duplication, or disclosure of proprietary information.** This document contains proprietary information which is the sole property of Werlatone, Inc. Werlatone, Inc. 17 Jon Barrett Road Patterson, NY 12563 T:(845)278-2220 F:(845)278-3440 sales@werlatone.com www.werlatone.com