
PRODUCT DATA SHEET
C5510

Non-Isolated Uneven Splitters (Taps): Utilized to un-evenly split a single run of 50 Ohm coaxial cable, hosting multiple frequency bands, so that a shorter corridor, tunnel, shaft, or hallway is provided a lesser portion of power on the main coaxial run than that required by a longer run. Non-Isolated Uneven Splitters are Bi-Directional, and unlike Directional Couplers, all ports can communicate with one another.

Features:

High Power Wide Bandwidths Small Size Flat Coupling Custom Designs Available

Electrical Specifications:

Frequency: 140 - 512 MHz
Power: 100 W CW
Coupling: 10 ± 1.0 dB Max.
Insertion Loss: 0.75 dB Max.
Flatness: ± 1.0 dB Max.
VSWR (ML): 1.30:1 Max.

Mechanical Specifications:

Type: Connectorized
Material: Aluminum 6061-T6
Surface Finish: Chem. Film Per MIL-DTL-5541F
Type I Class 3 (Yellow Iridite)
RoHS Compliant Available
Operating Temperature: -55°C to +75°C
Storage Temperature: -60°C to +85°C
Humidity: 95% Non-Condensing
Size: 2.5 x 1.75 x 1.5"
Weight: 7 ounces

Port Configurations:

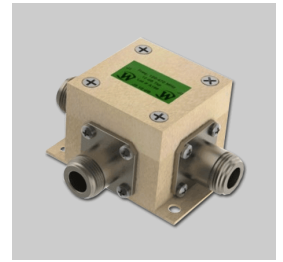
Model	Input (J1)	Output (J2)	Fwd (J3)
C5510-10	N Female	N Female	N Female
C5510-12	N Female	N Female	SMA
C5510-102	SMA	SMA	SMA

Werlatone® Broadband Non-Isolated Uneven Splitters (Taps) are designed to tolerate the most stringent operating conditions associated with Distributive Antenna Systems (DAS).



WERLATONE

Model C5510

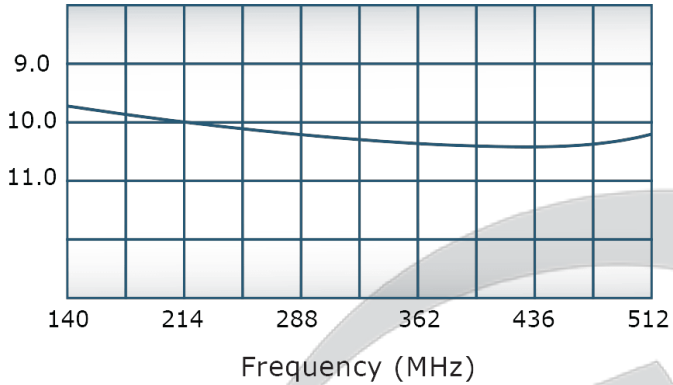


PRODUCT DATA SHEET

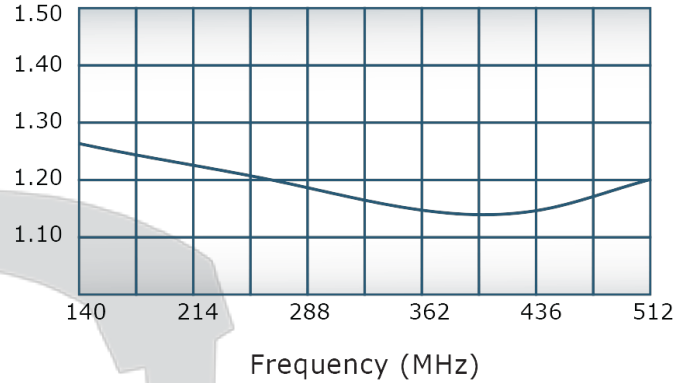
C5510

Performance Data (Specifications subject to change without notice):

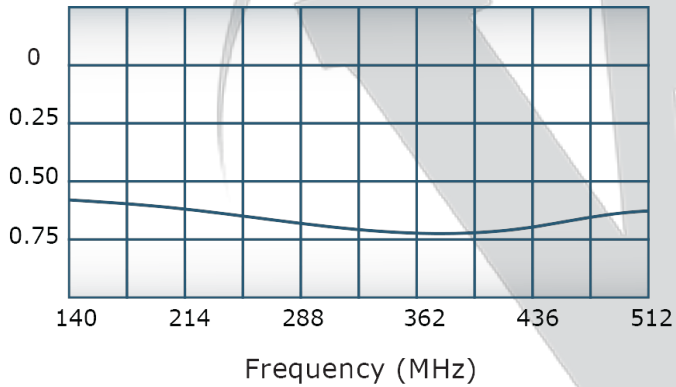
Coupling:



VSWR:



Insertion Loss:

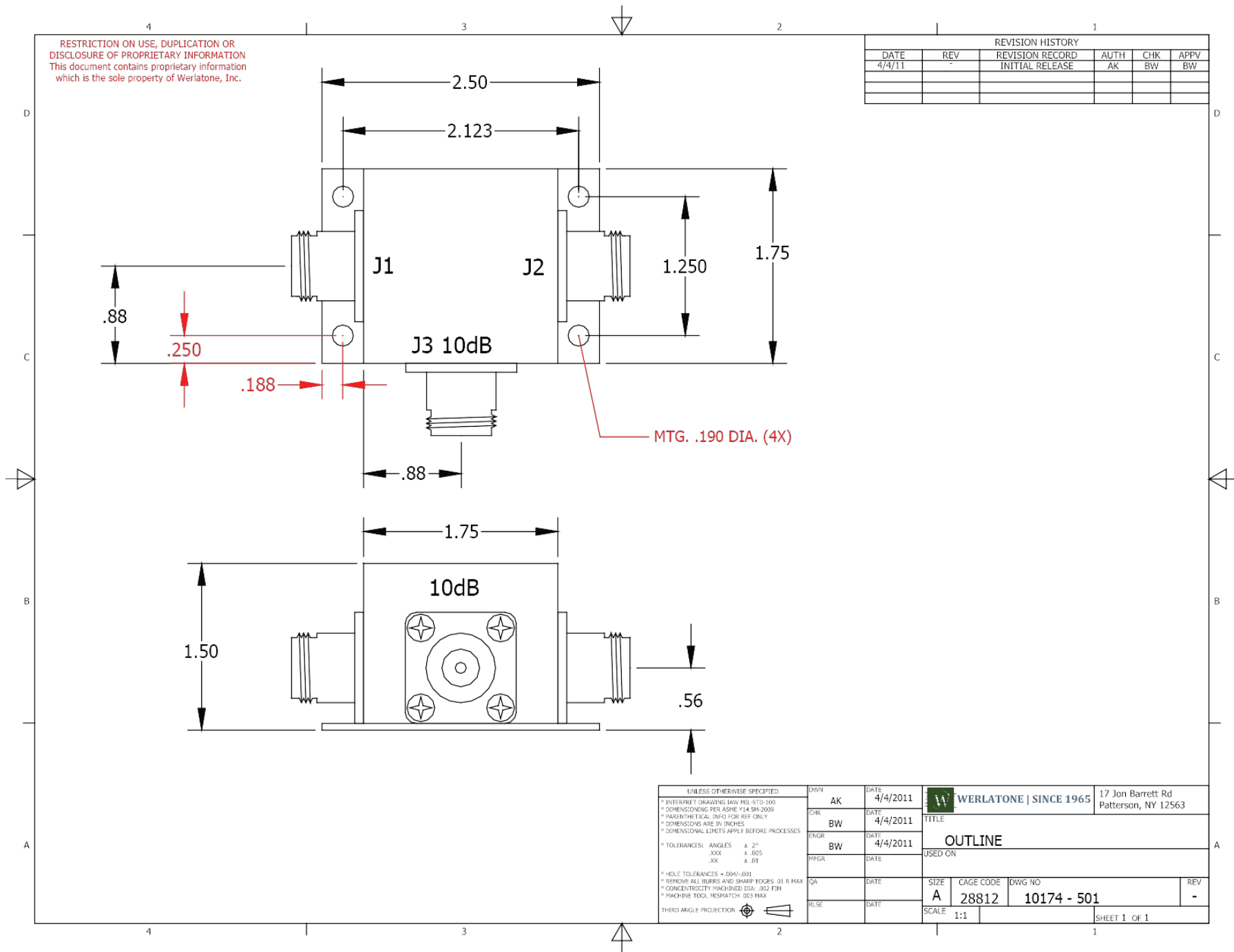


For In-Building Applications



Restriction on use, duplication, or disclosure of proprietary information. This document contains proprietary information which is the sole property of Werlatone, Inc.

Werlatone, Inc. 17 Jon Barrett Road Patterson, NY 12563 T:(845)278-2220 F:(845)278-3440 sales@werlatone.com www.werlatone.com



Restriction on use, duplication, or disclosure of proprietary information. This document contains proprietary information which is the sole property of Werlatone, Inc.
Werlatone, Inc. 17 Jon Barrett Road Patterson, NY 12563 T:(845)278-2220 F:(845)278-3440 sales@werlatone.com www.werlatone.com