
**PRODUCT DATA SHEET**
**C6374**

**4-Port Dual Directional Coupler** employs two, 3-Port Uni-Directional Couplers, internally connected, in tandem, providing measurement of both forward and reverse power. Ideal for simultaneously monitoring a system's forward and reverse power and for reflectometer measurements. Unlike the Bi-Directional Coupler, the directivity of the Dual Directional Coupler is unaffected by the loads on the coupled ports.

**Features:**

High Power      Wide Bandwidths      Small Size      Flat Coupling      Custom Designs Available

**Electrical Specifications:**

Frequency: 280 - 320 MHz  
Power: 600 W CW  
Coupling:  $50 \pm 1.0$  dB Max.  
Flatness:  $\pm 0.3$  dB Max.  
Insertion Loss: 0.1 dB Max.  
VSWR (ML): 1.15:1 Max.  
Directivity: 20 dB Min.

**Mechanical Specifications:**

Type: Connectorized  
Material: Aluminum 6061-T6  
Surface Finish: Chem. Film Per MIL-DTL-5541F  
Type I Class 3 (Yellow Iridite)  
RoHS Compliant Available  
Operating Temperature: -55°C to +75°C  
Storage Temperature: -60°C to +85°C  
Humidity: 95% Non-Condensing  
Size: 3.0 x 3.0 x 1.09"

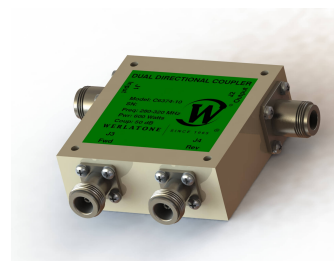
**Connector Configurations:**

Model	Input (J1)	Output (J2)	Fwd (J3)	Rev (J4)
C6374-10	N Female	N Female	N Female	N Female
C6374-12	N Female	N Female	SMA	SMA
C6374-13	N Female	N Female	BNC	BNC
C6374-102	SMA	SMA	SMA	SMA
C6374-302	TNC Female	TNC Female	SMA	SMA
C6374-712	N Male	N Female	SMA	SMA
C6374-714	N Male	N Female	N Female	N Female

**Werlatone®** Broadband Dual, Uni, and Bi Directional RF Couplers are designed to tolerate the most stringent operating conditions associated with military and EMC testing environments. Many of our RF Directional Couplers, designated Mismatch Tolerant®, will operate continuously, at rated power, into a severe load mismatch condition. Our multi-octave Directional Couplers maintain exceptional coupling flatness, directivity, VSWR, and insertion loss.

**Restriction on use, duplication, or disclosure of proprietary information.** This document contains proprietary information which is the sole property of Werlatone, Inc.

Werlatone, Inc. 17 Jon Barrett Road Patterson, NY 12563 T:(845)278-2220 F:(845)278-3440 sales@werlatone.com www.werlatone.com

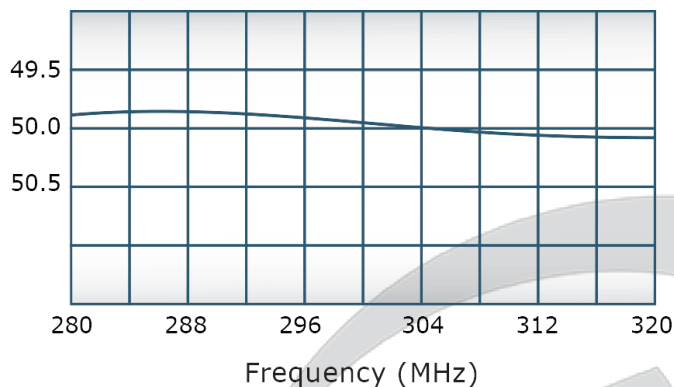


## PRODUCT DATA SHEET

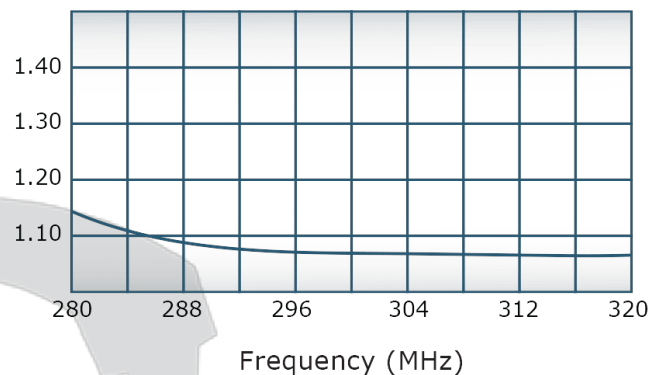
C6374

### Performance Data (Specifications subject to change without notice):

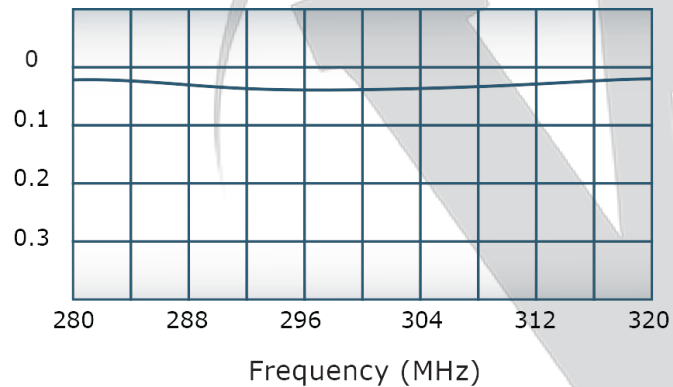
Coupling:



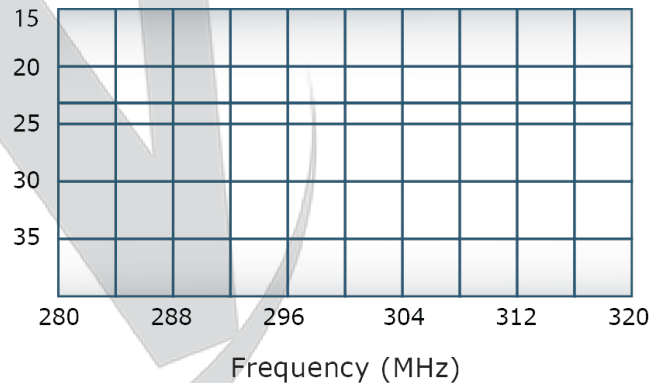
VSWR:



Insertion Loss:



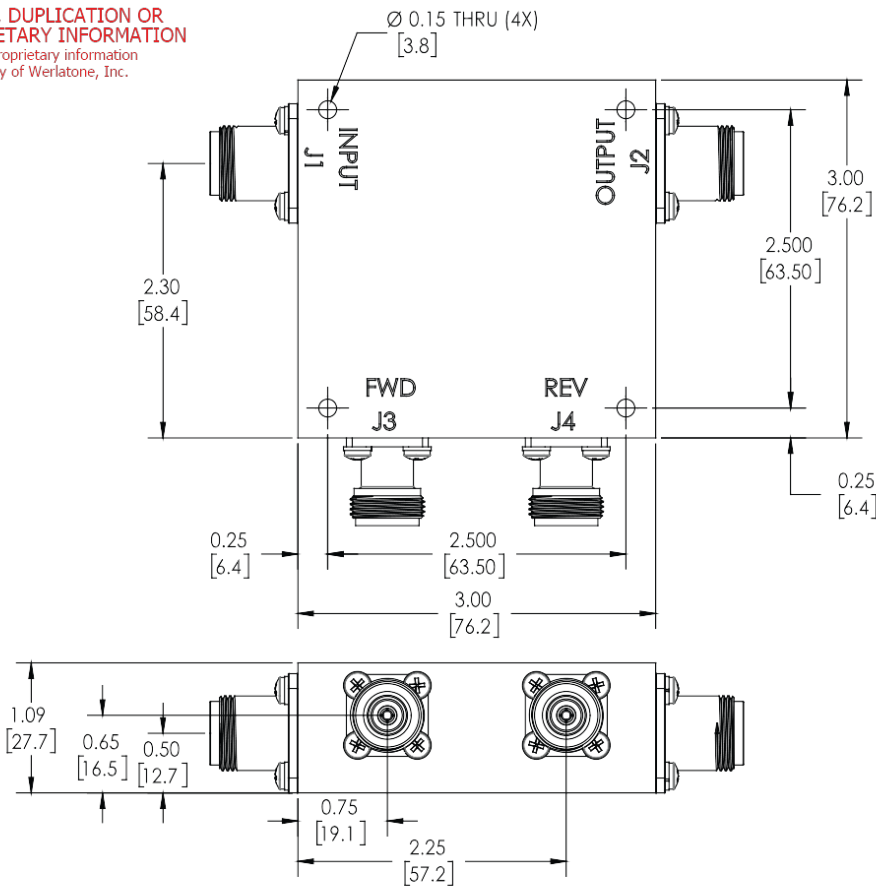
Directivity:



**Restriction on use, duplication, or disclosure of proprietary information.** This document contains proprietary information which is the sole property of Werlatone, Inc.

Werlatone, Inc. 17 Jon Barrett Road Patterson, NY 12563 T:(845)278-2220 F:(845)278-3440 sales@werlatone.com www.werlatone.com

RESTRICTION ON USE, DUPLICATION OR  
DISCLOSURE OF PROPRIETARY INFORMATION  
This document contains proprietary information  
which is the sole property of Werlatone, Inc.



REVISION HISTORY			
REV.	REVISION RECORD	DATE	APPROVED
A	ECN 9696	11/27/18	RB

**NOTES: UNLESS OTHERWISE SPECIFIED**

- MATERIAL: ALUMINUM 6061-T6**
- FINISH: CHEM FILM PER MIL-DTL\_5541F TYPE I CLASS 3 (YELLOW IRIDITE)**

UNLESS OTHERWISE SPECIFIED		OWN	DATE	WERLATONE SINCE 1965		17 Jon Barrett Rd Patterson, NY 12563	
• INTERPRET DRAWING JAW MIL-STD-100	• DIMENSIONING FOR ASME Y14.5M-2009	CHK	DATE	TITLE		REV	
• PARENTHESES FOR REF ONLY	• DIMENSIONS ARE IN INCHES	ENGR	DATE	OUTLINE		A	
• DIMENSIONAL LIMITS APPLY BEFORE PROCESSES	• TOLERANCES:	MFG	DATE	SIZE		CAGE CODE	
• ANGLES ± 2°	• 3 PL. ± .005 [1.3]	QA	DATE	B		10379-505	
• 2 PL. ± .015 [1.3]	• REMOVE ALL BURRS AND SHARP EDGES R.01 MAX	ELSE	DATE	SCALE		1:1	
• CONCENTRICITY MACHINED DIA: .002 FIM	• MACHINE TOOL MISMATCH: .003 MAX	THIRD ANGLE PROJECTION		SHEET 1 OF 1		1	
NEXT ASSY USED ON		APPLICATION		2		1	

Restriction on use, duplication, or disclosure of proprietary information. This document contains proprietary information which is the sole property of Werlatone, Inc.  
Werlatone, Inc. 17 Jon Barrett Road Patterson, NY 12563 T:(845)278-2220 F:(845)278-3440 sales@werlatone.com www.werlatone.com