

PRODUCT DATA SHEET

C6467

3-Port Uni-Directional Coupler: Consists of a main line and a coupled line. One end of the coupled line is internally terminated, while the other end serves as a coupled port. Ideal for sampling and monitoring power in one direction at a given time. It is necessary to physically reverse the orientation of the unit to change from a forward to a reverse power measurement.

Features:

High Power Wide Bandwidths Small Size Flat Coupling Custom Designs Available

Electrical Specifications:

Frequency: 225 - 400 MHz
 Power: 500 W CW
 Coupling: 20 ± 1.0 dB Max.
 Insertion Loss: 0.4 dB Max.
 Flatness: ± 0.5 dB Max.
 VSWR (ML): 1.30:1 Max.
 Directivity: 20 dB Min.

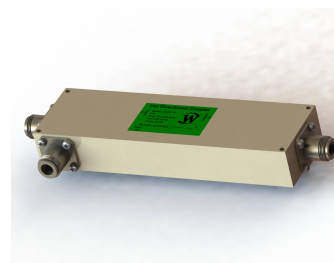
Mechanical Specifications:

Type: Connectorized
 Material: Aluminum 6061-T6
 Surface Finish: Chem. Film Per MIL-DTL-5541F
 Type I Class 3 (Yellow Iridite)
 RoHS Compliant Available
 Operating Temperature: -55°C to +75°C
 Storage Temperature: -60°C to +85°C
 Humidity: 95% Non-Condensing
 Size: 7.0 x 2.0 x 1.25"
 Weight: 1.25 lbs.

Port Configurations:

| Model | Input (J1) | Output (J2) | Fwd (J3) |
|-----------|------------|-------------|----------|
| C6467-10 | N Female | N Female | N Female |
| C6467-12 | N Female | N Female | SMA |
| C6467-102 | SMA | SMA | SMA |

Werlatone® Broadband Dual, Uni, and Bi Directional RF Couplers are designed to tolerate the most stringent operating conditions associated with military and EMC testing environments. Many of our RF Directional Couplers, designated Mismatch Tolerant®, will operate continuously, at rated power, into a severe load mismatch condition. Our multi-octave Directional Couplers maintain exceptional coupling flatness, directivity, VSWR, and insertion loss.

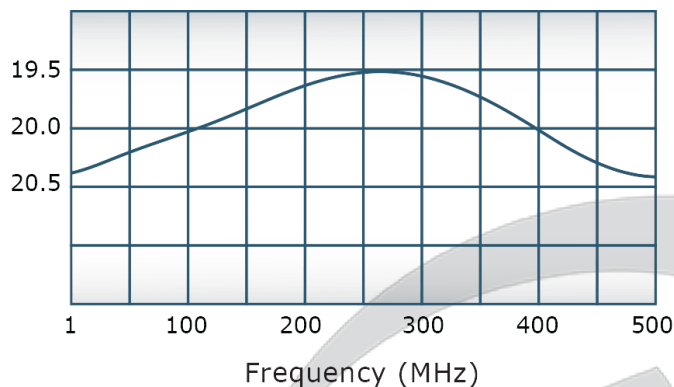


PRODUCT DATA SHEET

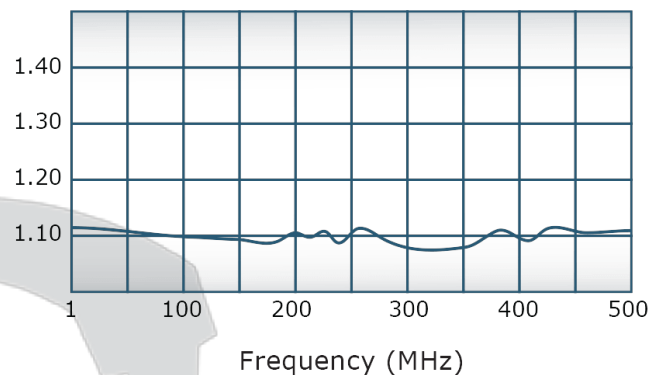
C6467

Performance Data (Specifications subject to change without notice):

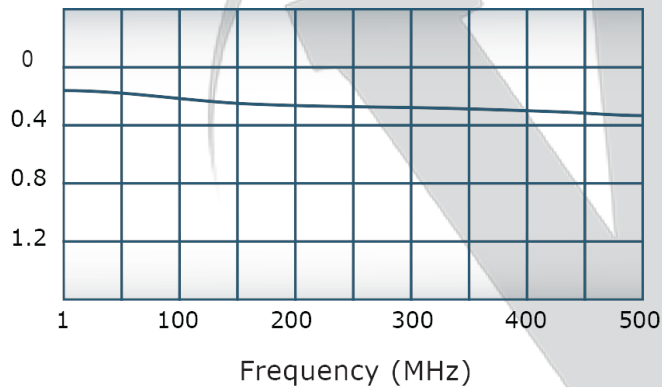
Coupling:



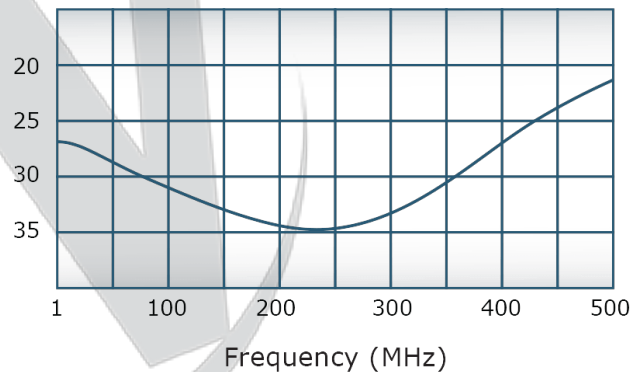
VSWR:



Insertion Loss:



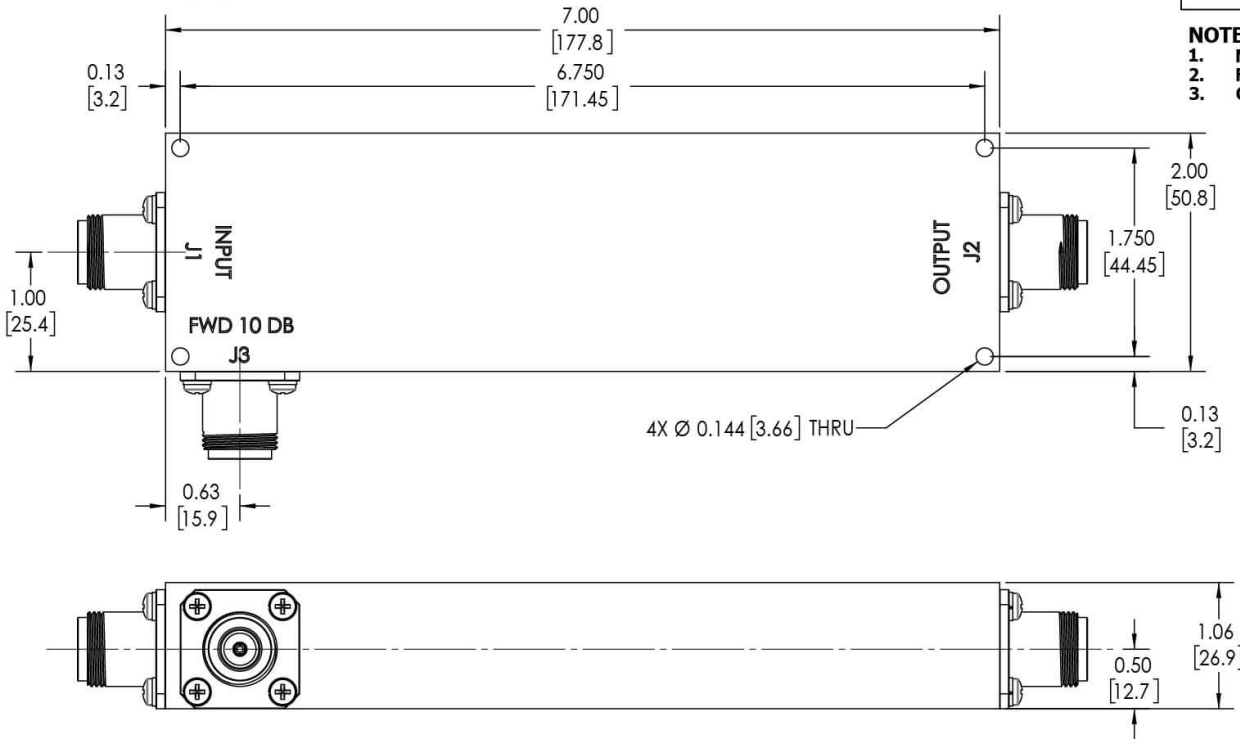
Directivity:




RESTRICTION ON USE, DUPLICATION OR DISCLOSURE OF PROPRIETARY INFORMATION
This document contains proprietary information which is the sole property of Werlatone, Inc.

| REVISION HISTORY | | | |
|------------------|-----------------|-----------|----------|
| REV. | REVISION RECORD | DATE | APPROVED |
| A | ECN 9696 | 8/14/2019 | RB |

- NOTES: UNLESS OTHERWISE SPECIFIED**
- MATERIAL: ALUMINUM 6061-T6**
 - FINISH: CHEM FILM PER MIL-DTL-5541F TYPE I CLASS 3 (YELLOW IRIDITE)**
 - CONNECTORS: J1-J3: N FEMALE**



| | | | | | | | | | |
|-------------|--|--|--|------|-----------|--|--|--|--|
| | | UNLESS OTHERWISE SPECIFIED | | OWN | DATE |  WERLATONE SINCE 1965 | | 17 Jon Barrett Rd Patterson, NY 12563 | |
| | | INTERPRET DRAWING IN ACCORDANCE WITH MIL-STD-100 | | SD | 8/14/2019 | TITLE | | <h1>OUTLINE</h1> | |
| | | DIMENSIONS FOR ASME Y14.5M-2009 | | CHK | DATE | | | | |
| | | PARENTHESES FOR REF ONLY | | CS | 8/14/2019 | SIZE | | CAGE CODE | |
| | | DIMENSIONS ARE IN INCHES | | ENGR | DATE | | | | |
| | | DIMENSIONAL LIMITS APPLY BEFORE PROCESSES | | INFR | DATE | B | | 10731-500 | |
| | | TOLERANCES: | | QA | DATE | | | | |
| | | ANGLES ± 2° | | RLSE | DATE | SHEET 1 OF 1 | | | |
| | | 3 PL ± .005 [13] | | | | | | | |
| | | 2 PL ± .015 [38] | | | | | | | |
| | | REMOVE ALL BURRS AND SHARP EDGES R.01 MAX | | | | | | | |
| | | CONCENTRICITY MACHINED DIA: .002 FIM | | | | | | | |
| | | MACHINE TOOL MISMATCH .003 MAX | | | | | | | |
| NEXT ASSY | | USED ON | | | | | | REV | |
| APPLICATION | | THIRD ANGLE PROJECTION | | | | | | A | |

Restriction on use, duplication, or disclosure of proprietary information. This document contains proprietary information which is the sole property of Werlatone, Inc.
Werlatone, Inc. 17 Jon Barrett Road Patterson, NY 12563 T:(845)278-2220 F:(845)278-3440 sales@werlatone.com www.werlatone.com