
**PRODUCT DATA SHEET**
**C6600**

**4-Port Bi-Directional Coupler:** Similar to the 3-Port Uni-Directional Coupler, except that both ends of the coupled line serve as coupled ports. Convenient for simultaneously monitoring both forward and reverse power. The directivity of this coupler design is, however, dependent upon well matched 50 Ohm loads on the coupled ports.

**Features:**

High Power      Wide Bandwidths      Small Size      Flat Coupling      Custom Designs Available

**Electrical Specifications:**

Frequency: 200 - 2000 MHz  
Power: 200 W CW  
Coupling:  $20 \pm 1.0$  dB Max.  
Insertion Loss: 0.25 dB Max.  
Flatness:  $\pm 1.2$  dB Max.  
VSWR (ML): 1.25:1 Max.  
Directivity: 18 dB Min.

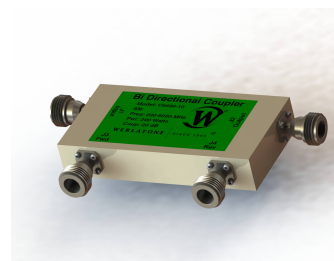
**Mechanical Specifications:**

Type: Connectorized  
Material: Aluminum 6061-T6  
Surface Finish: Chem. Film Per MIL-DTL-5541F  
Type I Class 3 (Yellow Iridite)  
RoHS Compliant Available  
Operating Temperature: -55°C to +75°C  
Storage Temperature: -60°C to +85°C  
Humidity: 95% Non-Condensing  
Size: 4.0 x 2.0 x 0.72"

**Connector Configurations:**

Model	Input (J1)	Output (J2)	Fwd (J3)	Rev (J4)
C6600-10	N Female	N Female	N Female	N Female
C6600-12	N Female	N Female	SMA	SMA
C6600-102	SMA	SMA	SMA	SMA

**Werlatone®** Broadband Dual, Uni, and Bi Directional RF Couplers are designed to tolerate the most stringent operating conditions associated with military and EMC testing environments. Many of our RF Directional Couplers, designated Mismatch Tolerant®, will operate continuously, at rated power, into a severe load mismatch condition. Our multi-octave Directional Couplers maintain exceptional coupling flatness, directivity, VSWR, and insertion loss.

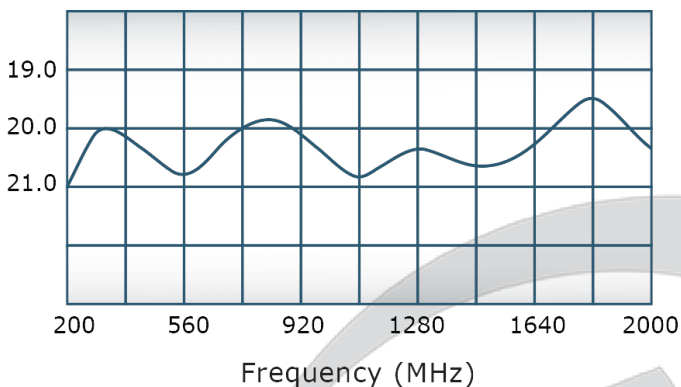


## PRODUCT DATA SHEET

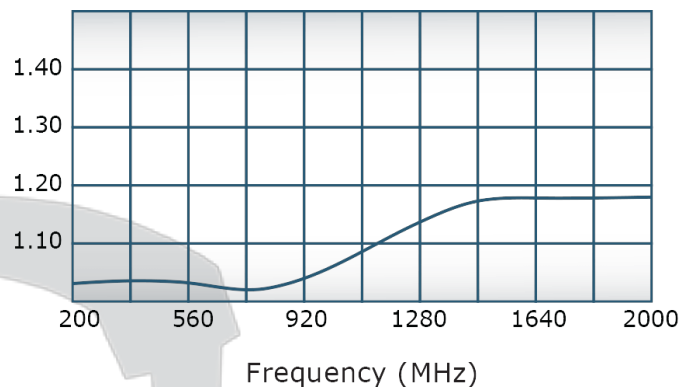
C6600

### Performance Data (Specifications subject to change without notice):

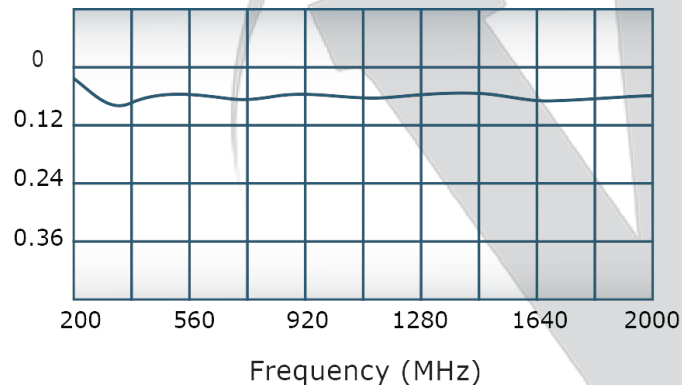
Coupling:



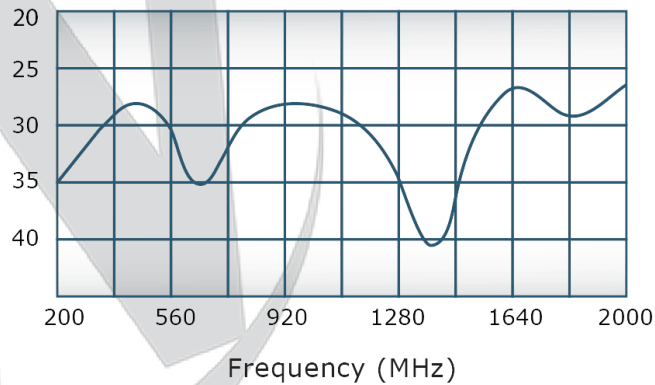
VSWR:



Insertion Loss:



Directivity:



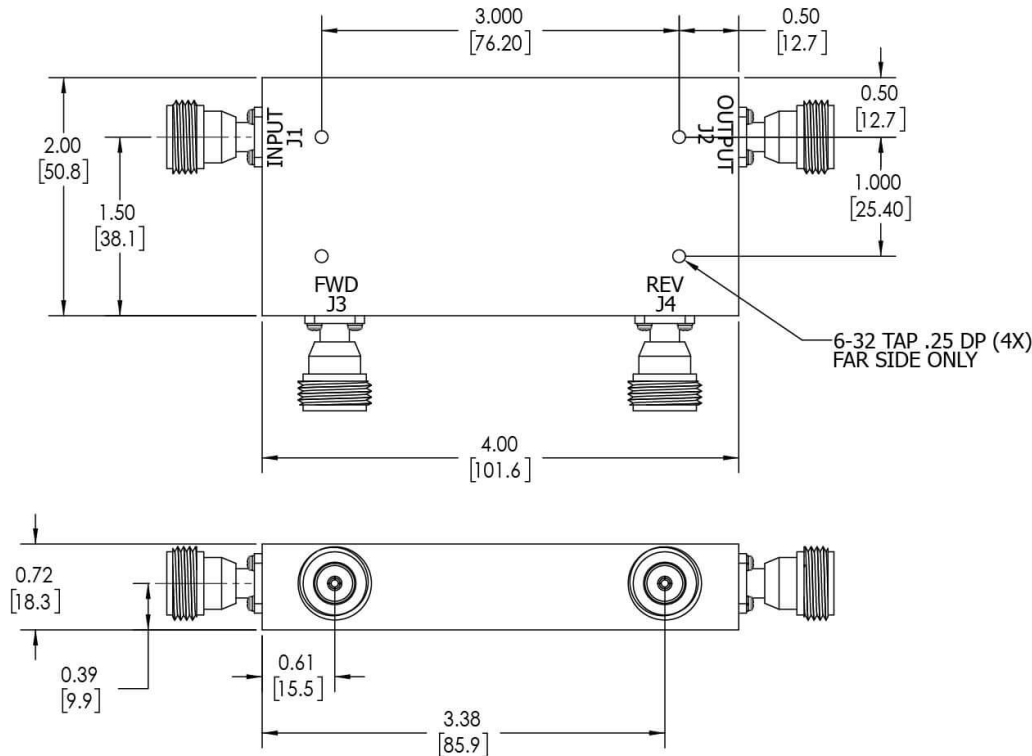
**RESTRICTION ON USE, DUPLICATION OR DISCLOSURE OF PROPRIETARY INFORMATION**  
This document contains proprietary information which is the sole property of Werlatone, Inc.


REVISION HISTORY			
REV.	REVISION RECORD	DATE	APPROVED
A	ECN 9696	8/22/2019	RB

**NOTES: UNLESS OTHERWISE SPECIFIED**

- MATERIAL: ALUMINUM 6061-T6**
- FINISH: CHEM FILM PER MIL-DTL-5541F TYPE I CLASS 3 (YELLOW IRIDITE)**
- CONNECTORS:  
J1-J4: N FEMALE**

6-32 TAP .25 DP (4X)  
FAR SIDE ONLY



UNLESS OTHERWISE SPECIFIED		OWN	DATE	<div> WERLATONE SINCE 1965</div> <div>17 Jon Barrett Rd Patterson, NY 12563</div>	
INTERPRET DRAWING IN ACCORDANCE WITH MIL-STD-100		SD	8/22/2019		
DIMENSIONS PER ASME Y14.5M-2009		CHK	DATE	<div>OUTLINE</div> <div>SIZE CAGE CODE DWG NO</div> <div>B 10907-500</div>	
PARENTHESES FOR REF ONLY		CS	8/22/2019		
DIMENSIONS ARE IN INCHES		ENGR	DATE	<div>SCALE</div> <div>1:1</div>	
DIMENSIONAL LIMITS APPLY BEFORE PROCESSES		INFR	DATE		
TOLERANCES:		QA	DATE	<div>SHEET 1 OF 1</div>	
ANGLES ± 2°		RLSE	DATE		
3 PL ± .005 [13]					
2 PL ± .015 [38]					
REMOVE ALL BURRS AND SHARP EDGES R.01 MAX					
CONCENTRICITY MACHINED DIA. .002 FIM					
MACHINE TOOL MISMATCH .003 MAX					
NEXT ASSY	USED ON	APPLICATION			
		THIRD ANGLE PROJECTION			

Restriction on use, duplication, or disclosure of proprietary information. This document contains proprietary information which is the sole property of Werlatone, Inc.  
Werlatone, Inc. 17 Jon Barrett Road Patterson, NY 12563 T:(845)278-2220 F:(845)278-3440 sales@werlatone.com www.werlatone.com