

PRODUCT DATA SHEET

C7926

3-Port Uni-Directional Coupler: Consists of a main line and a coupled line. One end of the coupled line is internally terminated, while the other end serves as a coupled port. Ideal for sampling and monitoring power in one direction at a given time. It is necessary to physically reverse the orientation of the unit to change from a forward to a reverse power measurement.

Features:

High Power Wide Bandwidths Small Size Flat Coupling Custom Designs Available

Electrical Specifications:

Frequency: 0.01 - 250 MHz
 Power: 100 W CW
 Coupling: 30 ± 1.0 dB Max.
 Insertion Loss: 0.4 dB Max.
 Flatness: ± 0.5 dB Max.
 VSWR (ML): 1.20:1 Max.
 Directivity: 20 dB Min.

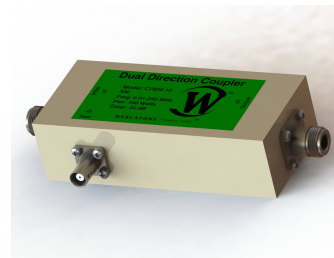
Mechanical Specifications:

Type: Connectorized
 Material: Aluminum 6061-T6
 Surface Finish: Chem. Film Per MIL-DTL-5541F
 Type I Class 3 (Yellow Iridite)
 RoHS Compliant Available
 Operating Temperature: -55°C to +75°C
 Storage Temperature: -60°C to +85°C
 Humidity: 95% Non-Condensing
 Size: 5.2 x 2.675 x 1.69"

Connector Configurations:

Model	Input (J1)	Output (J2)	Fwd (J3)
C7926-10	N Female	N Female	N Female
C7926-12	N Female	N Female	SMA
C7926-13	N Female	N Female	BNC
C7926-102	SMA	SMA	SMA
C7926-613	N Female	N Male	BNC

Werlatone® Broadband Dual, Uni, and Bi Directional RF Couplers are designed to tolerate the most stringent operating conditions associated with military and EMC testing environments. Many of our RF Directional Couplers, designated Mismatch Tolerant®, will operate continuously, at rated power, into a severe load mismatch condition. Our multi-octave Directional Couplers maintain exceptional coupling flatness, directivity, VSWR, and insertion loss.

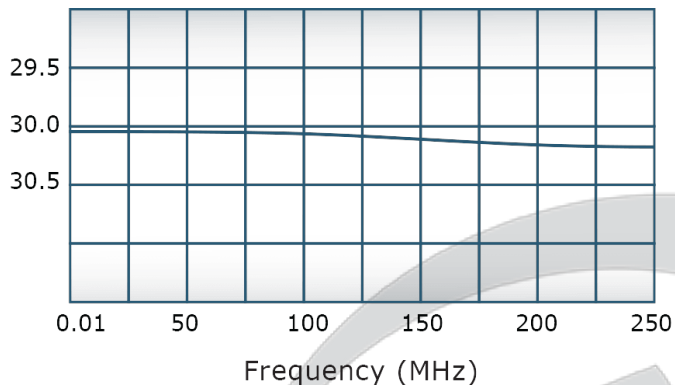


PRODUCT DATA SHEET

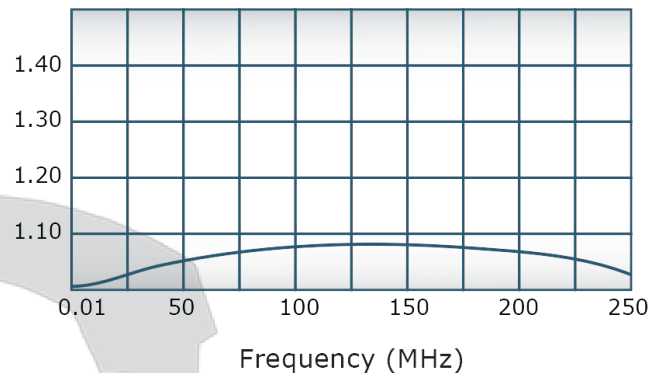
C7926

Performance Data (Specifications subject to change without notice):

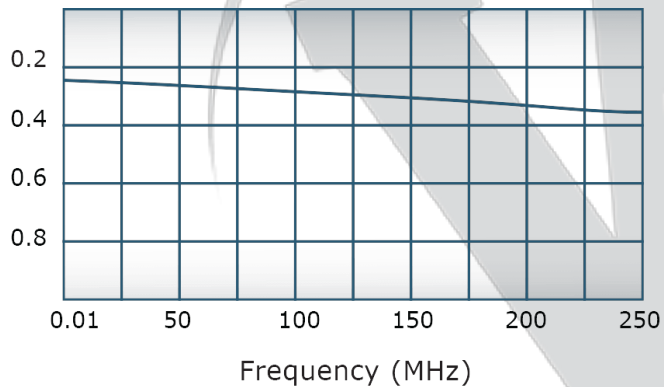
Coupling:



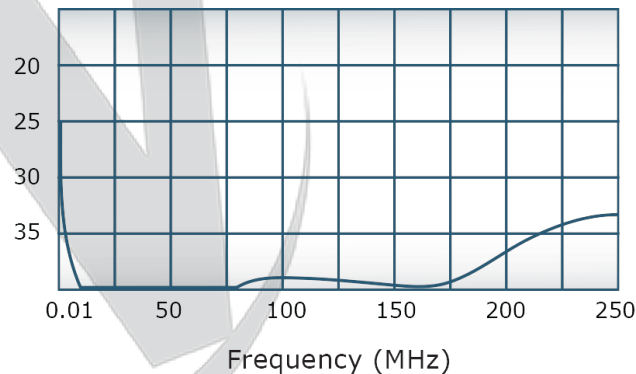
VSWR:



Insertion Loss:



Directivity:



Restriction on use, duplication, or disclosure of proprietary information. This document contains proprietary information which is the sole property of Werlatone, Inc.

Werlatone, Inc. 17 Jon Barrett Road Patterson, NY 12563 T:(845)278-2220 F:(845)278-3440 sales@werlatone.com www.werlatone.com

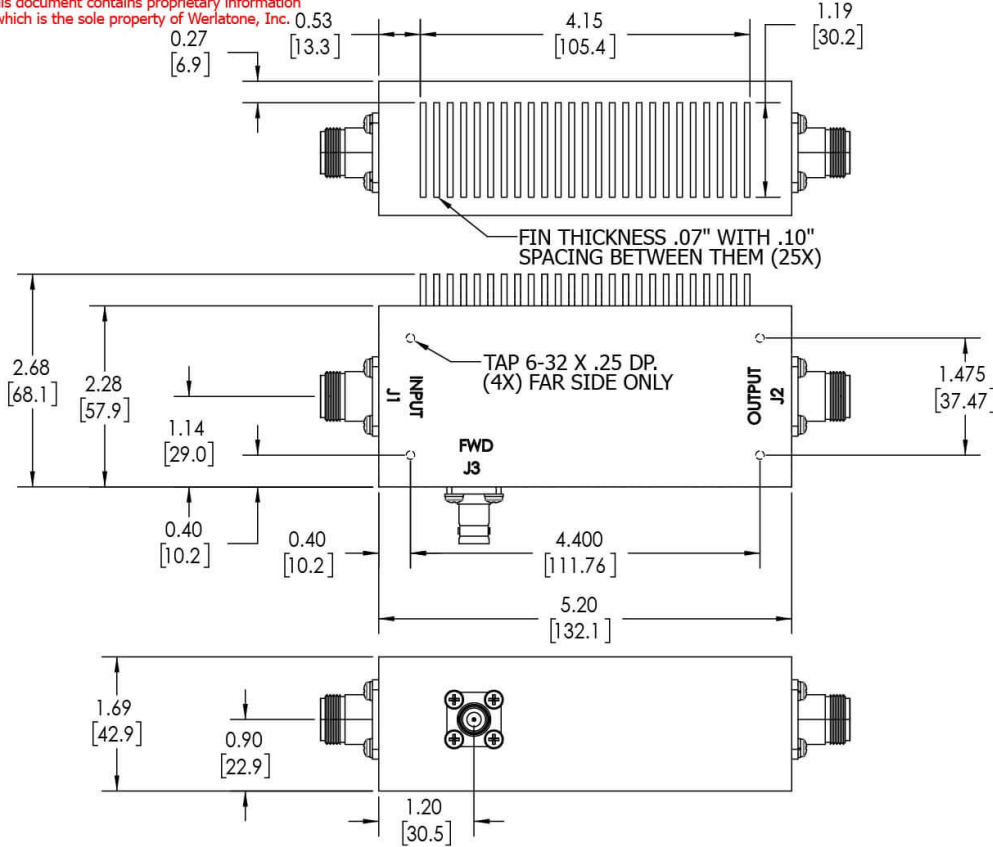
RESTRICTION ON USE, DUPLICATION OR DISCLOSURE OF PROPRIETARY INFORMATION


This document contains proprietary information which is the sole property of Werlatone, Inc.

REVISION HISTORY			
REV.	REVISION RECORD	DATE	APPROVED
A	ECN 3933	1/06	CS
B	ECN 9696	11/30/2018	RB

NOTES: UNLESS OTHERWISE SPECIFIED

- MATERIAL: ALUMINUM 6061-T6**
- FINISH: CHEM FILM PER MIL-DTL-5541F TYPE I CLASS 3 (YELLOW IRIDITE)**
- CONNECTORS:**
J1, J2: N FEMALE
J3: BNC FEMALE



		UNLESS OTHERWISE SPECIFIED		OWN	DATE	 WERLATONE SINCE 1965	17 Jon Barrett Rd Patterson, NY 12563		
		INTERPRET DRAWING IN ACCORDANCE WITH MIL-STD-100		SD	2/11/2019		TITLE		
		DIMENSIONS FOR ASME Y14.5M-2009		CHK	DATE	OUTLINE			
		PARENTHESES FOR REF ONLY		CS	2/11/2019		SIZE	CAGE CODE	
		DIMENSIONS ARE IN INCHES		ENGR	DATE	B			
		DIMENSIONAL LIMITS APPLY BEFORE PROCESSES		CS	2/27/2002		SCALE	1:1.5	
		TOLERANCES:		INFR	DATE	RLSE			DATE
		ANGLES ± 2° 3 PL ± .005 [13] 2 PL ± .015 [38]		QA	DATE				
		REMOVE ALL BURRS AND SHARP EDGES R.01 MAX CONCENTRICITY MACHINED DIA: .002 FIM MACHINE TOOL MISMATCH .003 MAX							
NEXT ASSY USED ON		THIRD ANGLE PROJECTION							
APPLICATION									

Restriction on use, duplication, or disclosure of proprietary information. This document contains proprietary information which is the sole property of Werlatone, Inc.
 Werlatone, Inc. 17 Jon Barrett Road Patterson, NY 12563 T:(845)278-2220 F:(845)278-3440 sales@werlatone.com www.werlatone.com