

PRODUCT DATA SHEET

C8000

4-Port Bi-Directional Coupler: Similar to the 3-Port Uni-Directional Coupler, except that both ends of the coupled line serve as coupled ports. Convenient for simultaneously monitoring both forward and reverse power. The directivity of this coupler design is, however, dependent upon well matched 50 Ohm loads on the coupled ports.

Features:

High Power Wide Bandwidths Small Size Flat Coupling Custom Designs Available

Electrical Specifications:

Frequency: 600 - 6000 MHz
 Power: 100 W CW
 Coupling: 30 ± 1.0 dB Max.
 Insertion Loss: 0.4 dB Max.
 Flatness: ± 1.0 dB Max.
 VSWR (ML): 1.25:1 Max.
 Directivity: 15 dB Min.

Mechanical Specifications:

Type: Connectorized
 Material: Aluminum 6061-T6
 Surface Finish: Chem. Film Per MIL-DTL-5541F
 Type I Class 3 (Yellow Iridite)
 RoHS Compliant Available
 Operating Temperature: -55°C to +75°C
 Storage Temperature: -60°C to +85°C
 Humidity: 95% Non-Condensing
 Size: 1.8 x 1.00 x 0.56"

Connector Configurations:

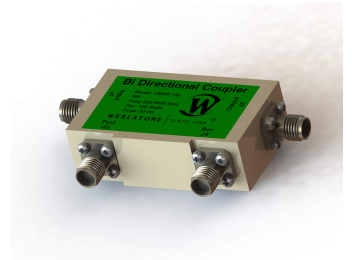
Model	Input (J1)	Output (J2)	Fwd (J3)	Rev (J4)
C8000-102	SMA Female	SMA Female	SMA Female	SMA Female

Werlatone® Broadband Dual, Uni, and Bi Directional RF Couplers are designed to tolerate the most stringent operating conditions associated with military and EMC testing environments. Many of our RF Directional Couplers, designated Mismatch Tolerant®, will operate continuously, at rated power, into a severe load mismatch condition. Our multi-octave Directional Couplers maintain exceptional coupling flatness, directivity, VSWR, and insertion loss.



WERLATONE

Model C8000

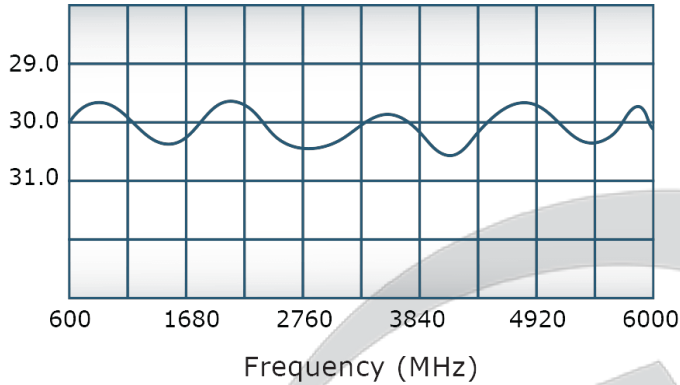


PRODUCT DATA SHEET

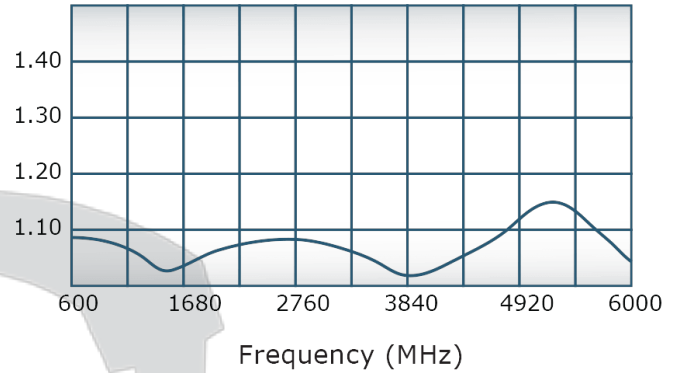
C8000

Performance Data (Specifications subject to change without notice):

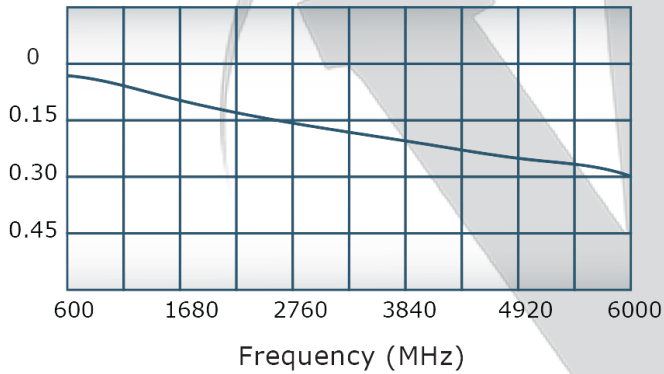
Coupling:



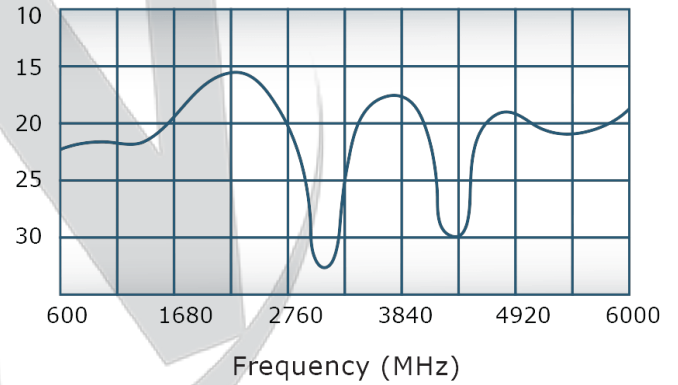
VSWR:



Insertion Loss:



Directivity:

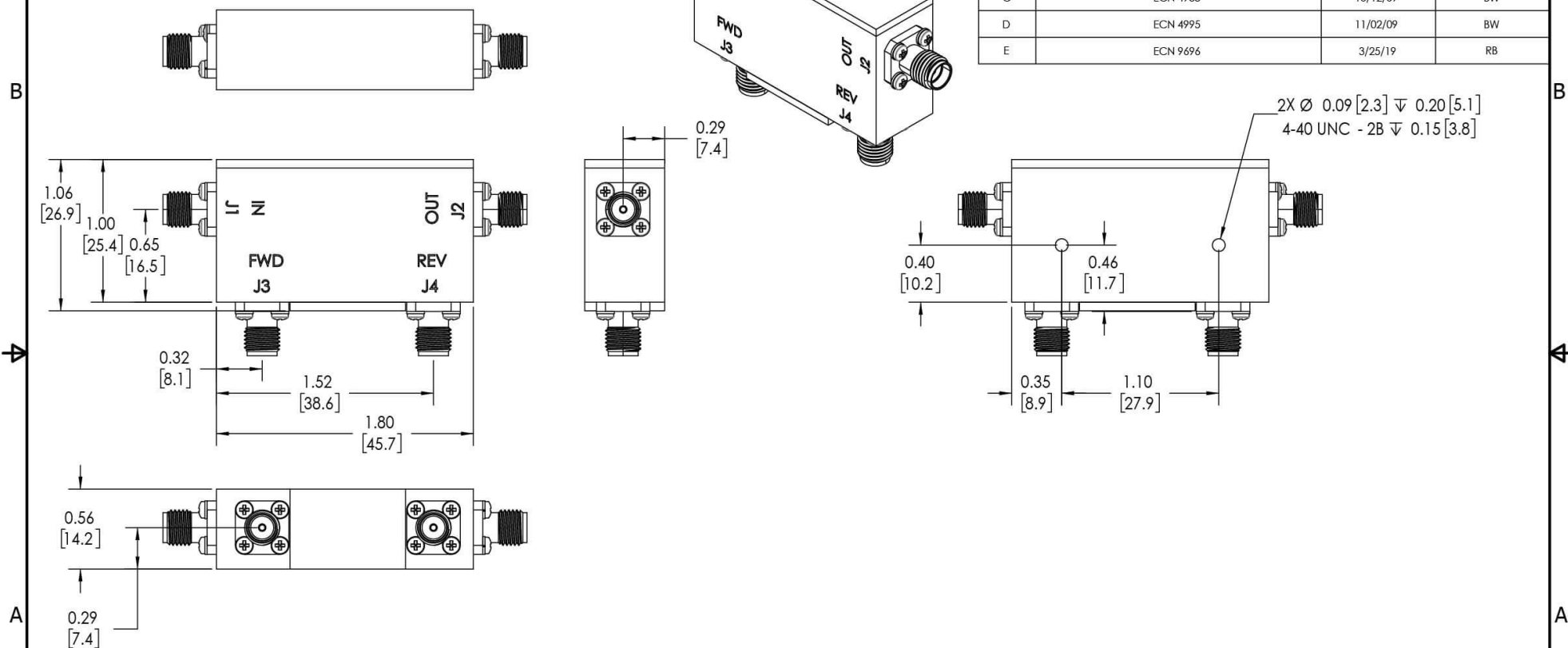


Restriction on use, duplication, or disclosure of proprietary information. This document contains proprietary information which is the sole property of Werlatone, Inc.

Werlatone, Inc. 17 Jon Barrett Road Patterson, NY 12563 T:(845)278-2220 F:(845)278-3440 sales@werlatone.com www.werlatone.com

RESTRICTION ON USE, DUPLICATION OR DISCLOSURE OF PROPRIETARY INFORMATION
 This document contains proprietary information which is the sole property of Werlatone, Inc.

REVISION HISTORY			
REV.	REVISION RECORD	DATE	APPROVED
A	ECN 4505	5/06/08	BW
B	ECN 4534	6/02/08	BW
C	ECN 4988	10/12/09	BW
D	ECN 4995	11/02/09	BW
E	ECN 9696	3/25/19	RB



NOTES: UNLESS OTHERWISE SPECIFIED

- MATERIAL: ALUMINUM 6061-T6**
- FINISH: CHEM FILM PER MIL-DTL-5541F TYPE I CLASS 3 (YELLOW IRIDITE)**
- CONNECTORS: J1-J4: SMA FEMALE**

UNLESS OTHERWISE SPECIFIED		DATE	3/25/2019
INTERPRET DRAWING IN ACCORDANCE WITH MIL-STD-100	SD	DATE	3/25/2019
DIMENSIONS FOR ASSEMBLY	CHK	DATE	3/25/2019
PARENTHESES FOR REF ONLY	CS	DATE	3/25/2019
DIMENSIONS ARE IN INCHES	ENGR	DATE	3/25/2019
DIMENSIONAL LIMITS APPLY BEFORE PROCESSES	INFR	DATE	3/25/2019
TOLERANCES:	QA	DATE	3/25/2019
ANGLES ± 2°	RLSE	DATE	3/25/2019
3 PL ± .005 [0.13]			
2 PL ± .015 [0.38]			
REMOVE ALL BURRS AND SHARP EDGES R.01 MAX			
CONCENTRICITY MACHINED DIA. .002 FIM			
MACHINE TOOL MISMATCH .003 MAX			
THIRD ANGLE PROJECTION			
NEXT ASSY USED ON			
APPLICATION			
TITLE		W	WERLATONE SINCE 1965
17 Jon Barrett Rd		Patterson, NY 12563	
OUTLINE		REV E	
SIZE		CAGE CODE	DWG NO
B		20360-500	
SCALE		1.5:1	
SHEET 1 OF 1			

Restriction on use, duplication, or disclosure of proprietary information. This document contains proprietary information which is the sole property of Werlatone, Inc.
 Werlatone, Inc. 17 Jon Barrett Road Patterson, NY 12563 T:(845)278-2220 F:(845)278-3440 sales@werlatone.com www.werlatone.com