

PRODUCT DATA SHEET

C8098

4-Port Bi-Directional Coupler: Similar to the 3-Port Uni-Directional Coupler, except that both ends of the line serve as coupled ports. Convenient for simultaneously monitoring both forward and reverse power. The directivity of this coupler design is, however, dependent upon well matched 50 Ohm loads on the coupled ports.

Features:

High Power Wide Bandwidths Small Size Flat Coupling Custom Designs Available

Electrical Specifications:

Frequency: 800 - 2000 MHz
 Power: 200 W CW
 Coupling: 30 ± 1.0 dB Max.
 Flatness: ± 0.7 dB Max.
 VSWR (ML): 1.20:1 Max.
 Directivity: 20 dB Min.

Mechanical Specifications:

Type: Drop-In
 Operating Temperature: -55°C to +75°C
 Storage Temperature: -60°C to +85°C
 Surface Finish Options:
 C8098-Pb: Electrodeposited Tin/Lead
 C8098-Sn: Immersion Tin
 C8098-Ag: Immersion Silver
 C8098-Au: ENIG
 Size: 1.3 x 1.0 x 0.07"

Hatched areas denote metallization

Port Configurations:

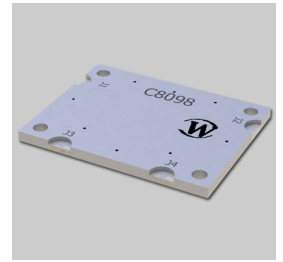
J1	J2	J3	J4
Input	Output	Forward (-30 dB)	Reverse (-30 dB)

Werlatone® Broadband Dual, Uni, and Bi Directional RF Couplers are designed to tolerate the most stringent operating conditions associated with military and EMC testing environments. Many of our RF Directional Couplers, designated Mismatch Tolerant®, will operate continuously, at rated power, into a severe load mismatch condition. Our multi-octave Directional Couplers maintain exceptional coupling flatness, directivity, VSWR, and insertion loss.



WERLATONE

Model C8098

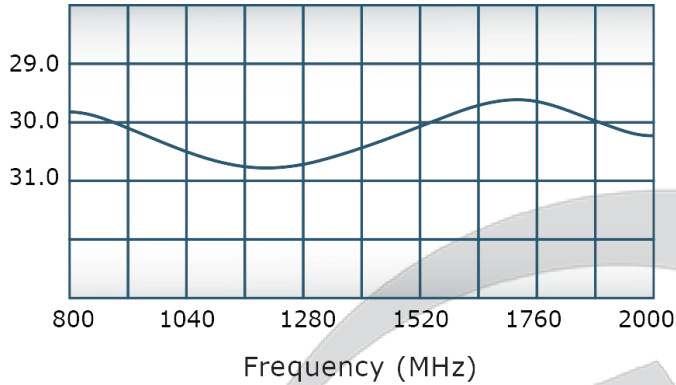


PRODUCT DATA SHEET

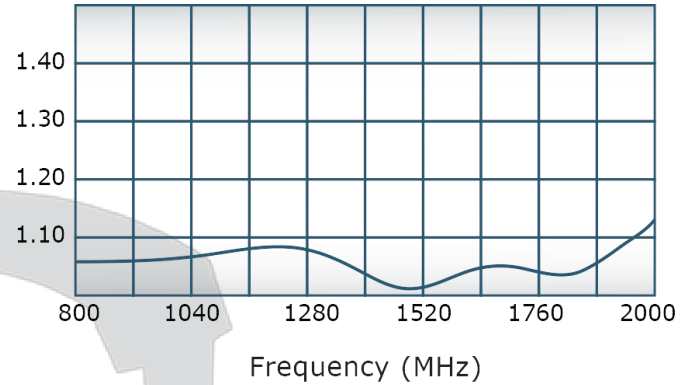
C8098

Performance Data (Specifications subject to change without notice):

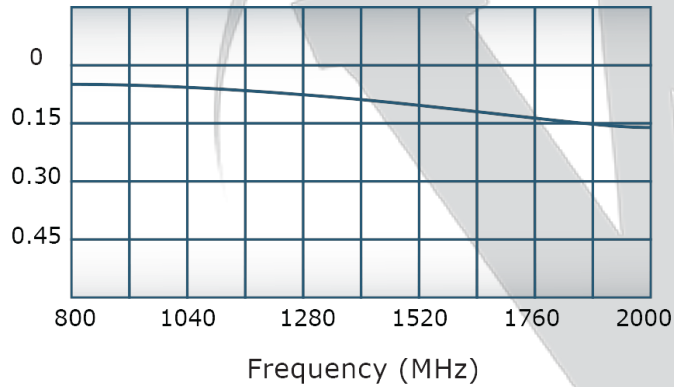
Coupling:



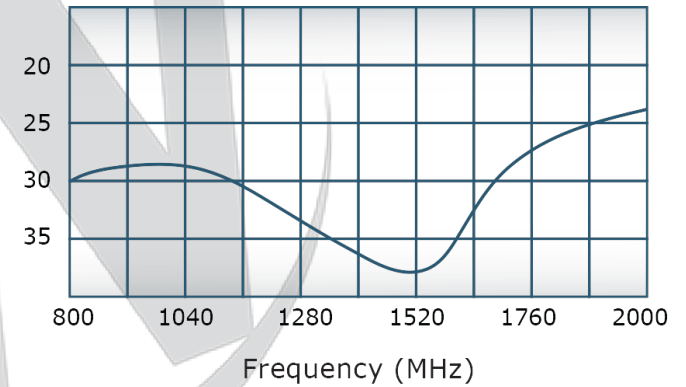
VSWR:



Insertion Loss:



Directivity:

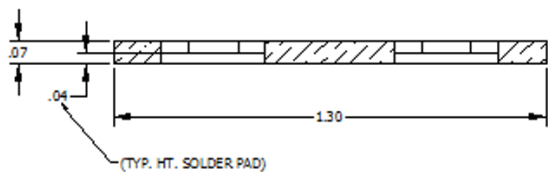
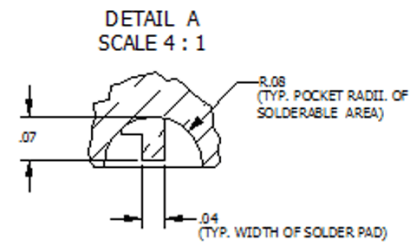
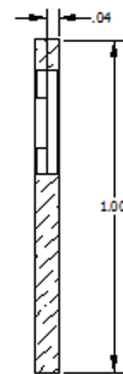
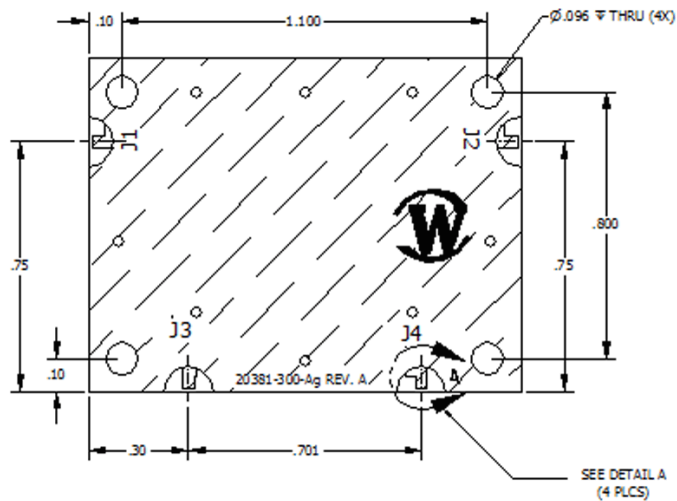


Restriction on use, duplication, or disclosure of proprietary information. This document contains proprietary information which is the sole property of Werlatone, Inc.

Werlatone, Inc. 17 Jon Barrett Road Patterson, NY 12563 T:(845)278-2220 F:(845)278-3440 sales@werlatone.com www.werlatone.com

RESTRICTION ON USE, DUPLICATION OR DISCLOSURE OF PROPRIETARY INFORMATION
This document contains proprietary information which is the sole property of Wenstone, Inc.

REVISIONS HISTORY						
DATE	REV	REVISION REASON	AUTH	CHK	APPV	
7/17/2016	1	FCB # 4917	RII	DAV	DAV	
4/12/2016	1	FCB # 5122	RII	DAV	DAV	



LINE ITEM LIST SUMMARY CONTRACT NO. 2018-001-001 PROJECT NO. 2018-001-001 DRAWING NO. 2018-001-001 SHEET NO. 2018-001-001 DATE 10/10/2018	NO.	DATE	W WERLATONE SINCE 1965		2095 Route 22 Acosta, NY 13606
	NH	01/10/2018	JLL		
	BW	01/10/2018	OUTLINE		
	BW	01/10/2018	BLUE CH		
	NO.	DATE	DATE	DATE	FL
	NO.	DATE	DATE	DATE	B

Restriction on use, duplication, or disclosure of proprietary information. This document contains proprietary information which is the sole property of Werlatone, Inc.
Werlatone, Inc. 17 Jon Barrett Road Patterson, NY 12563 T:(845)278-2220 F:(845)278-3440 sales@werlatone.com www.werlatone.com