
PRODUCT DATA SHEET
C8284

4-Port Dual Directional Coupler employs two, 3-Port Uni-Directional Couplers, internally connected, in tandem, providing measurement of both forward and reverse power. Ideal for simultaneously monitoring a system's forward and reverse power and for reflectometer measurements. Unlike the Bi-Directional Coupler, the directivity of the Dual Directional Coupler is unaffected by the loads on the coupled ports.

Features:

High Power Wide Bandwidths Small Size Flat Coupling Custom Designs Available

Electrical Specifications:

Frequency: 1000 - 3000 MHz
Power: 1000 W CW
Coupling: 40 ± 1.0 dB Max.
Insertion Loss: 0.3 dB Max.
Flatness: ± 0.5 dB Max.
VSWR (ML): 1.35:1 Max.
Directivity: 18 dB Min.

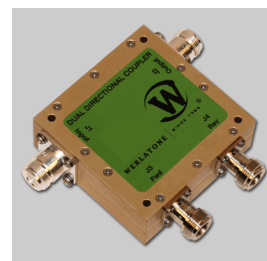
Mechanical Specifications:

Type: Connectorized
Material: Aluminum 6061-T6
Surface Finish: Chem. Film Per MIL-DTL-5541F
Type I Class 3 (Yellow Iridite)
RoHS Compliant Available
Operating Temperature: -55°C to +75°C
Storage Temperature: -60°C to +85°C
Humidity: 95% Non-Condensing
Size: 3.0 x 3.0 x 1.09"

Connector Configurations:

Model	Input (J1)	Output (J2)	Fwd (J3)	Rev (J4)
C8284-10	N Female	N Female	N Female	N Female
C8284-12	N Female	N Female	SMA	SMA
C8284-13	N Female	N Female	BNC	BNC
C8284-20*	7/16 Female	7/16 Female	N Female	N Female
C8284-22*	7/16 Female	7/16 Female	SMA	SMA
C8284-23*	7/16 Female	7/16 Female	BNC	BNC
C8284-41	SC Female	SC Female	N Female	N Female
C8284-43	SC Female	SC Female	SMA	SMA
C8284-627*	7/16 Female	7/16 Male	N Female	N Female
C8284-727*	7/16 Male	7/16 Female	N Female	N Female
C8284-728*	7/16 Male	7/16 Female	SMA	SMA

(7/16 Mainline connector option increases size to 3.0 x 3.0 x 1.59")

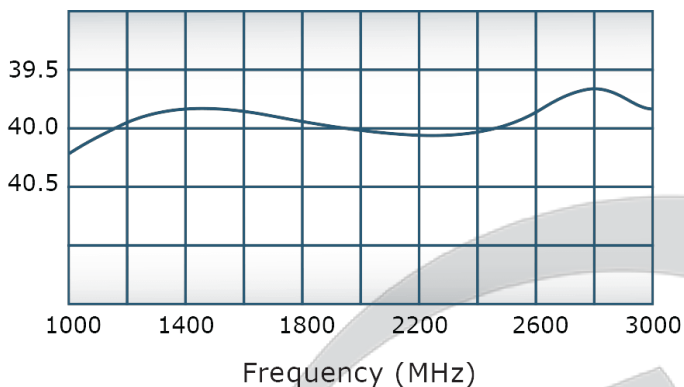


PRODUCT DATA SHEET

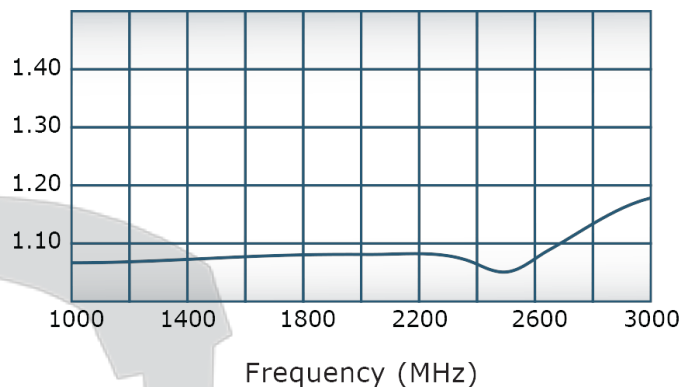
C8284

Performance Data (Specifications subject to change without notice):

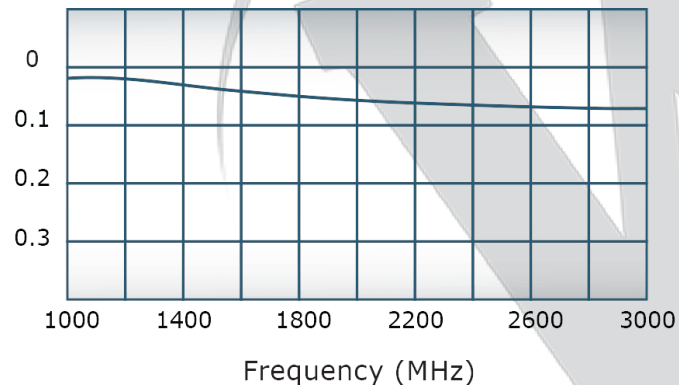
Coupling:



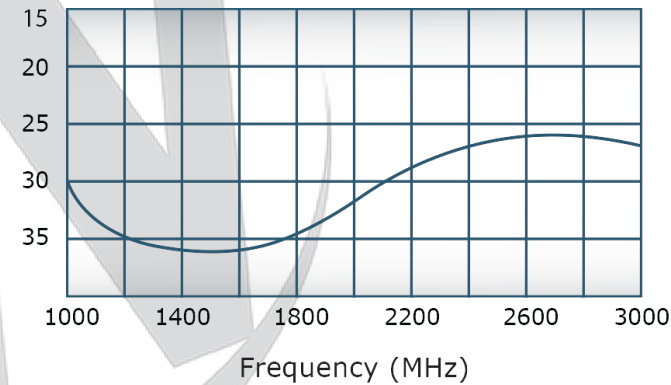
VSWR:



Insertion Loss:



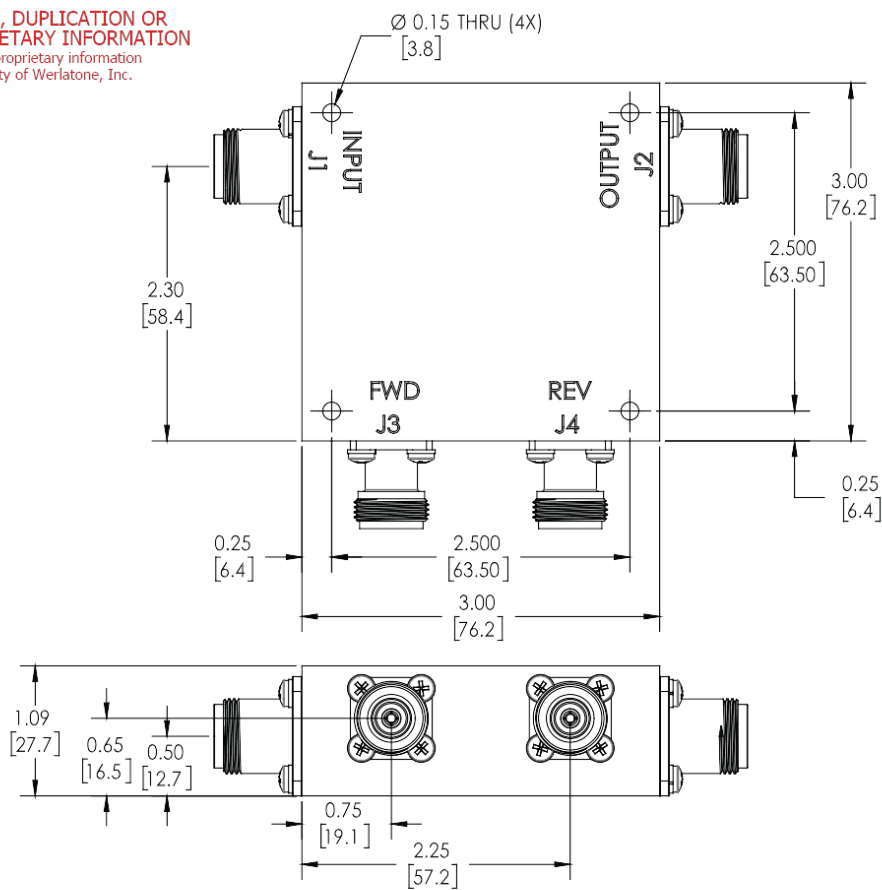
Directivity:



Restriction on use, duplication, or disclosure of proprietary information. This document contains proprietary information which is the sole property of Werlatone, Inc.

Werlatone, Inc. 17 Jon Barrett Road Patterson, NY 12563 T:(845)278-2220 F:(845)278-3440 sales@werlatone.com www.werlatone.com



RESTRICTION ON USE, DUPLICATION OR DISCLOSURE OF PROPRIETARY INFORMATION
This document contains proprietary information which is the sole property of Werlatone, Inc.



REVISION HISTORY			
REV.	REVISION RECORD	DATE	APPROVED
A	ECN 9696	11/27/18	RB

NOTES: UNLESS OTHERWISE SPECIFIED

1. MATERIAL: ALUMINUM 6061-T6
2. FINISH: CHEM FILM PER MIL-DTL 5541F TYPE I CLASS 3 (YELLOW IRIDITE)

		UNLESS OTHERWISE SPECIFIED		OWN	DATE	 WERLATONE® SINCE 1965	17 Jon Barrett Rd Patterson, NY 12568	
		• INTERPRET DRAWING AS PER: STD-100		RH	7/5/2001			
		• DIMENSIONING PER ASME Y14.5-2009		CHK	DATE			
		• ARCHITECTURAL UNITS FOR KEY ONLY						
		• DIMENSIONS ARE IN INCHES		ENGR	DATE	TITLE		
		• DIMENSIONAL LIMITS APPLY BEFORE PROCESSES		MD	7/5/2001	<h1>OUTLINE</h1>		
		• TOLERANCES:						
		ANGLES ± 2° 2 PL ± .002 [13] 3 PL ± .005 [38]						
		• REMOVE ALL BURS AND SHARP EDGES R.25 MAX						
		• CONCENTRICITY MACHINED DIA. .002 FIM		QA		SIZE	CAGE CODE	DWG NO
		• MACHINE TOOL REGISTRATION .002 MAX						
NEXT ASSY		USED ON		RLSE	DATE	B		
APPLICATION		THIRD ANGLE PROJECTION 				10379-505		
						Scale 1:1		SHEET 1 OF 1

Restriction on use, duplication, or disclosure of proprietary information. This document contains proprietary information which is the sole property of Werlatone, Inc. Werlatone, Inc. 17 Jon Barrett Road Patterson, NY 12563 T:(845)278-2220 F:(845)278-3440 sales@werlatone.com www.werlatone.com