

PRODUCT DATA SHEET

C9344

4-Port Dual Directional Coupler employs two, 3-Port Uni-Directional Couplers, internally connected, in tandem, providing measurement of both forward and reverse power. Ideal for simultaneously monitoring a system's forward and reverse power and for reflectometer measurements. Unlike the Bi-Directional Coupler, the directivity of the Dual Directional Coupler is unaffected by the loads on the coupled ports.

Features:

High Power Wide Bandwidths Small Size Flat Coupling Custom Designs Available

Electrical Specifications:

Frequency: 1000 - 2500 MHz
Power: 3000 W CW
Coupling: 50 ± 1.0 dB Max.
Insertion Loss: 0.2 dB Max.
Flatness: ± 0.5 dB Max.
VSWR (ML): 1.30:1 Max.
Directivity: 20 dB Min.

Mechanical Specifications:

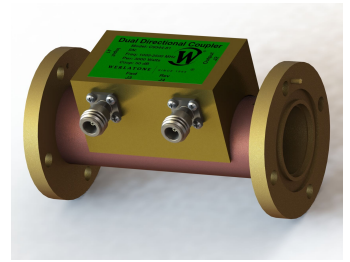
Type: Connectorized
Material: Aluminum 6061-T6
Surface Finish: Chem. Film Per MIL-DTL-5541F
Type I Class 3 (Yellow Iridite)
RoHS Compliant Available
Operating Temperature: -55°C to +75°C
Storage Temperature: -60°C to +85°C
Humidity: 95% Non-Condensing
Size: 6" Line Section

Connector Configurations:

Model	Input (J1)	Output (J2)	Fwd (J3)	Rev (J4)
C9344-81	1 5/8" EIA	1 5/8" EIA	N Female	N Female
C9344-83	1 5/8" EIA	1 5/8" EIA	SMA	SMA
C9344-84	1 5/8" EIA	1 5/8" EIA	BNC	BNC

Werlatone® Broadband Dual, Uni, and Bi Directional RF Couplers are designed to tolerate the most stringent operating conditions associated with military and EMC testing environments. Many of our RF Directional Couplers, designated Mismatch Tolerant®, will operate continuously, at rated power, into a severe load mismatch condition. Our multi-octave Directional Couplers maintain exceptional coupling flatness, directivity, VSWR, and insertion loss.

Restriction on use, duplication, or disclosure of proprietary information. This document contains proprietary information which is the sole property of Werlatone, Inc. Werlatone, Inc. 17 Jon Barrett Road Patterson, NY 12563 T:(845)278-2220 F:(845)278-3440 sales@werlatone.com www.werlatone.com

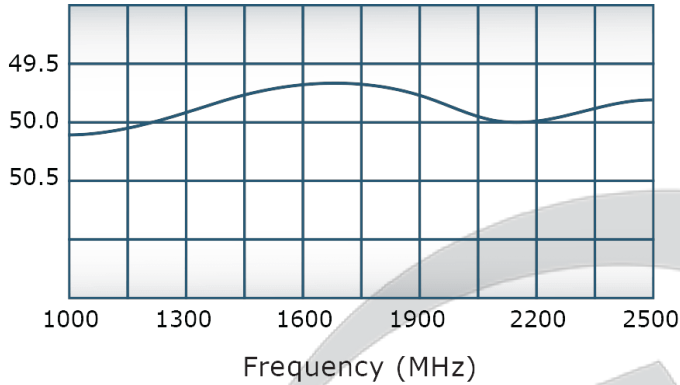


PRODUCT DATA SHEET

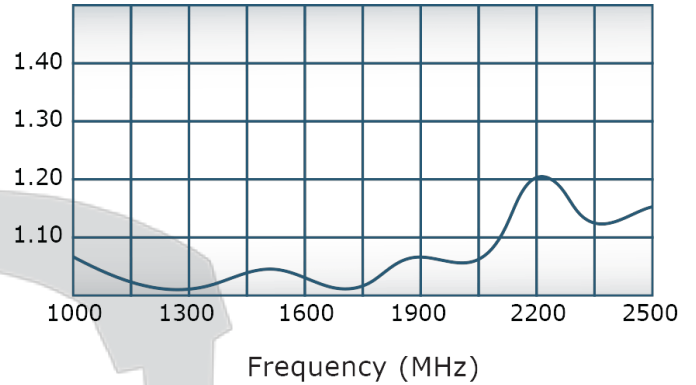
C9344

Performance Data (Specifications subject to change without notice):

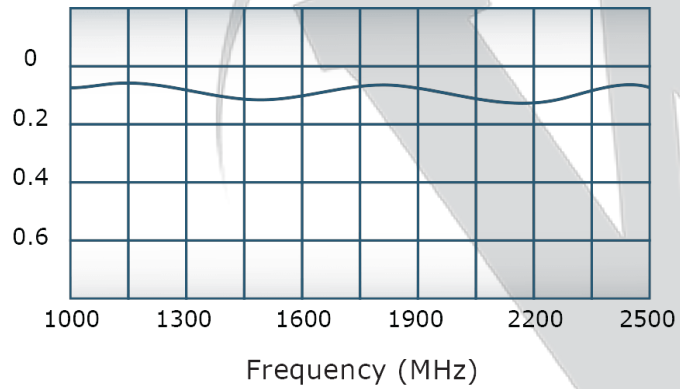
Coupling:



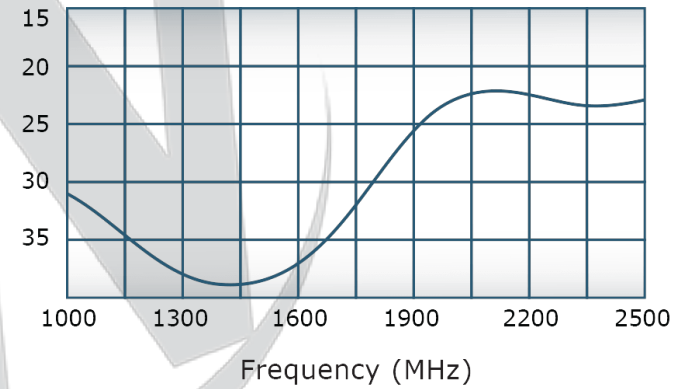
VSWR:



Insertion Loss:

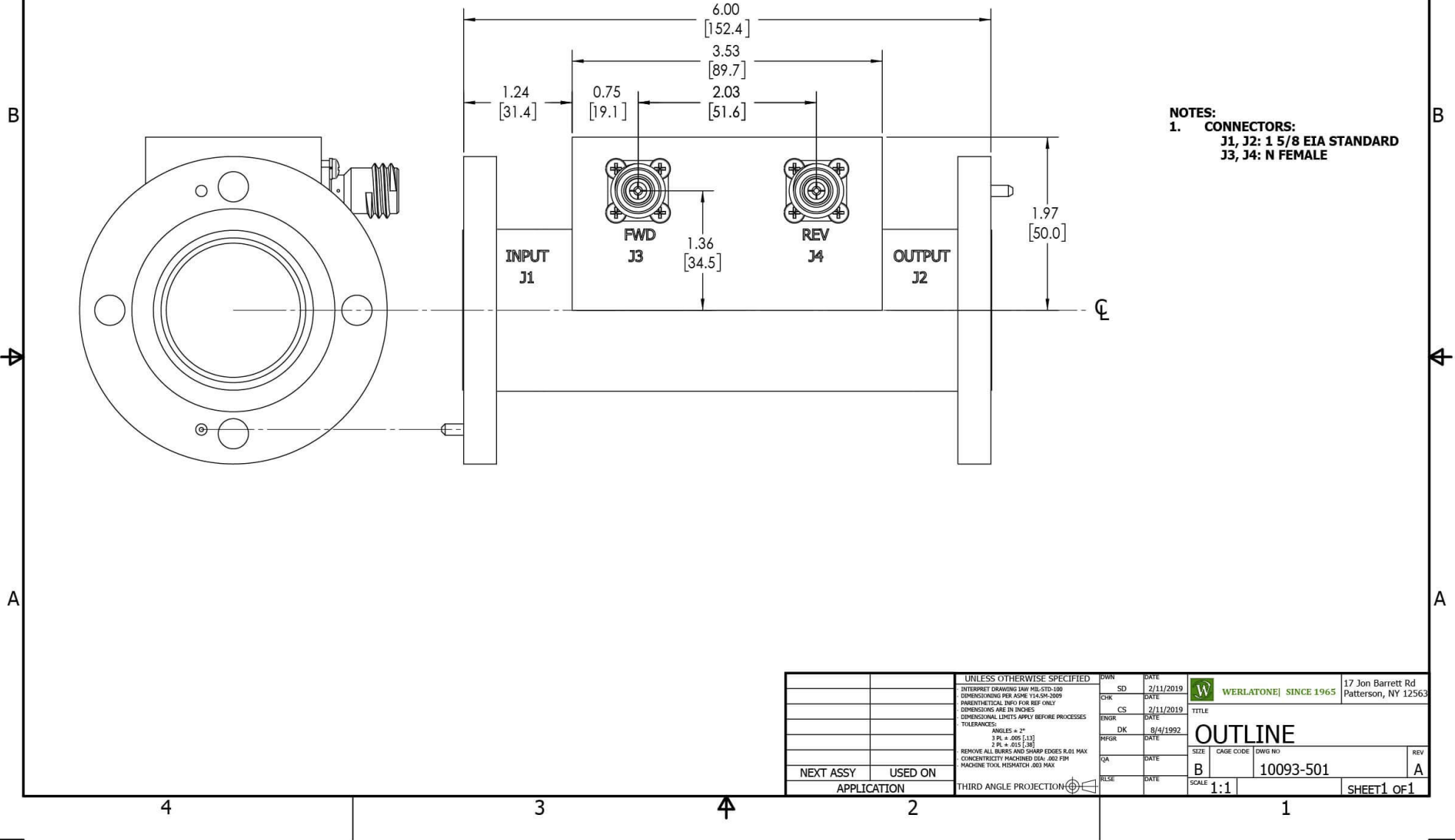


Directivity:



RESTRICTION ON USE, DUPLICATION OR DISCLOSURE OF PROPRIETARY INFORMATION
 This document contains proprietary information which is the sole property of Werlatone, Inc.

REVISION HISTORY			
REV.	REVISION RECORD	DATE	APPROVED
A	ECN 9696	11/29/18	RB



NOTES:
 1. **CONNECTORS:**
 J1, J2: 1 5/8 EIA STANDARD
 J3, J4: N FEMALE

UNLESS OTHERWISE SPECIFIED		DATE	17 Jon Barrett Rd
INTERRUPT DRAWING IAW MIL-STD-100	SD	2/11/2019	Patterson, NY 12563
DIMENSIONS FOR ASME Y14.5M-2009	CHK	DATE	
PARENTHESES INFO FOR REF ONLY	CS	2/11/2019	
DIMENSIONS ARE IN INCHES	ENGR	DATE	TITLE
DIMENSIONAL LINES APPLY BEFORE PROCESSES	DK	8/4/1992	OUTLINE
TOLERANCES:	INFR	DATE	SIZE CAGE CODE DWG NO
ANGLES ± 2°	QA	DATE	B 10093-501
3 PL ± .005 [1.3]	RLSE	DATE	SCALE 1:1
2 PL ± .015 [3.8]			SHEET 1 OF 1
REMOVE ALL BURS AND SHARP EDGES R.01 MAX			
CONCENTRICITY MACHINED DIA: .002 FIM			
MACHINE TOOL MISMATCH .003 MAX			

Restriction on use, duplication, or disclosure of proprietary information. This document contains proprietary information which is the sole property of Werlatone, Inc.
 Werlatone, Inc. 17 Jon Barrett Road Patterson, NY 12563 T:(845)278-2220 F:(845)278-3440 sales@werlatone.com www.werlatone.com