



PRODUCT DATA SHEET

C9613

4-Port Dual Directional Coupler employs two, 3-Port Uni-Directional Couplers, internally connected, in tandem, providing measurement of both forward and reverse power. Ideal for simultaneously monitoring a system's forward and reverse power and for reflectometer measurements. Unlike the Bi-Directional Coupler, the directivity of the Dual Directional Coupler is unaffected by the loads on the coupled ports.

Features:

High Power Wide Bandwidths Small Size Flat Coupling Custom Designs Available

Electrical Specifications:

Frequency: 20 - 500 MHz
Power: 200 W CW
Coupling: 50 ± 1.0 dB Max.
Insertion Loss: 0.35 dB Max.
Flatness: ± 0.5 dB Max.
VSWR (ML): 1.30:1 Max.
Directivity: 20 dB Min.

Mechanical Specifications:

Type: Connectorized
Material: Aluminum 6061-T6
Surface Finish: Chem. Film Per MIL-DTL-5541F
Type I Class 3 (Yellow Iridite)
RoHS Compliant Available
Operating Temperature: -55°C to +75°C
Storage Temperature: -60°C to +85°C
Humidity: 95% Non-Condensing
Size: 5.2 x 2.67 x 1.69"

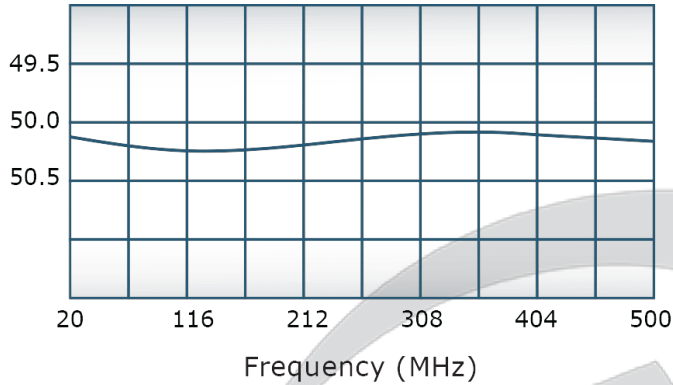
Connector Configurations:

Model	Input (J1)	Output (J2)	Fwd (J3)	Rev (J4)
C9613-10	N Female	N Female	N Female	N Female
C9613-12	N Female	N Female	SMA	SMA
C9613-13	N Female	N Female	BNC	BNC
C9613-102	SMA	SMA	SMA	SMA
C9613-304	TNC Male	TNC Female	SMA	SMA
C9613-610	N Female	N Male	N Female	N Female
C9613-614	N Female	N Male	SMA	SMA
C9613-714	N Male	N Female	N Female	N Female

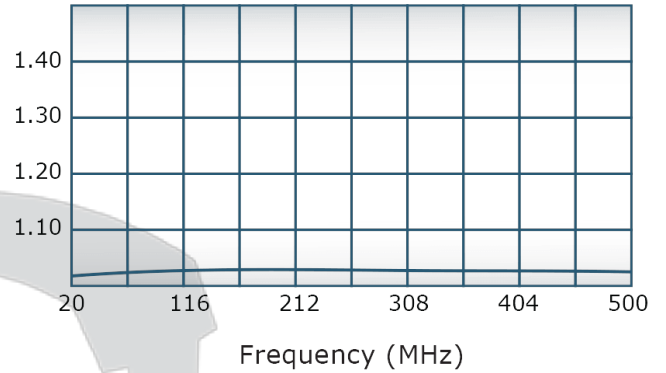


Performance Data (Specifications subject to change without notice):

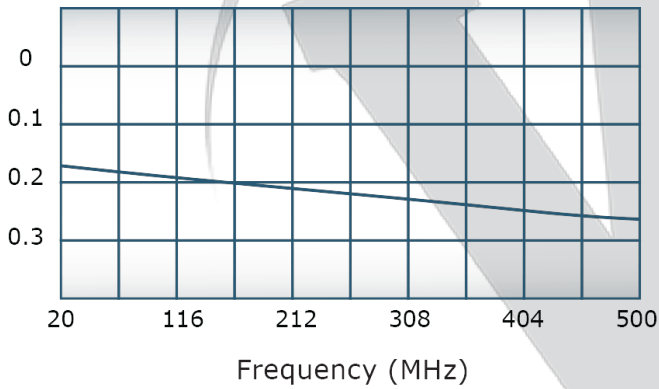
Coupling:



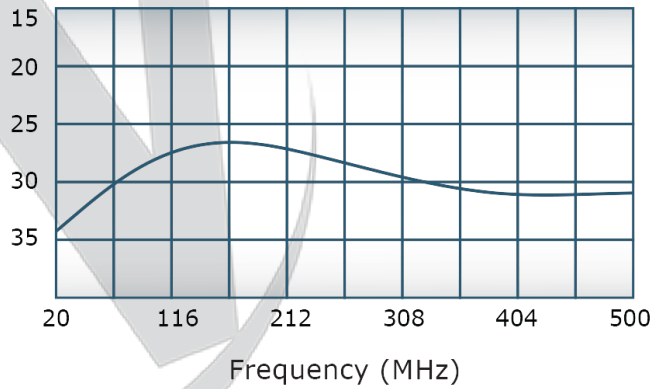
VSWR:



Insertion Loss:



Directivity:



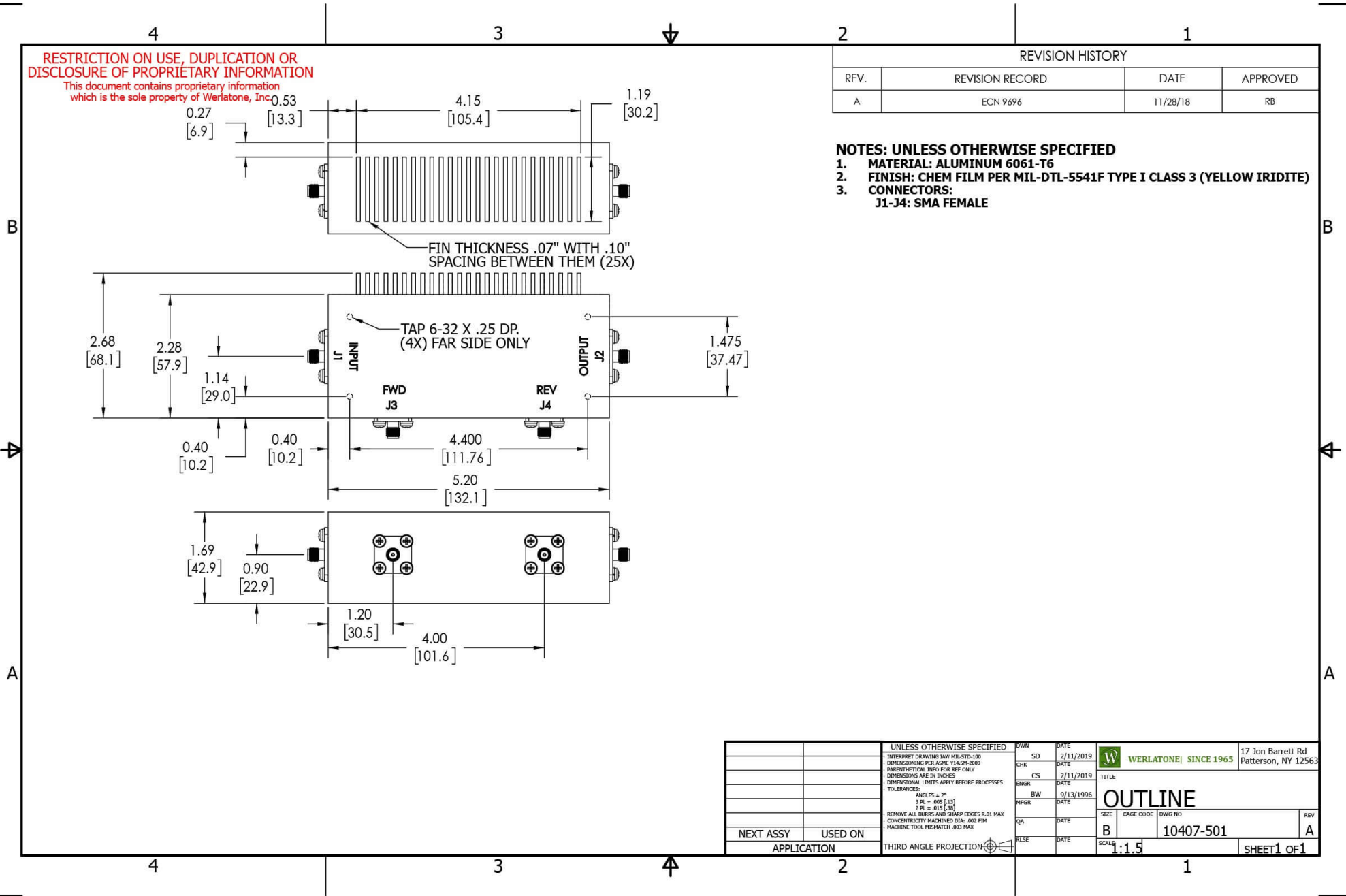
RESTRICTION ON USE, DUPLICATION OR DISCLOSURE OF PROPRIETARY INFORMATION

This document contains proprietary information which is the sole property of Werlatone, Inc.

REVISION HISTORY			
REV.	REVISION RECORD	DATE	APPROVED
A	ECN 9696	11/28/18	RB

NOTES: UNLESS OTHERWISE SPECIFIED

- MATERIAL: ALUMINUM 6061-T6**
- FINISH: CHEM FILM PER MIL-DTL-5541F TYPE I CLASS 3 (YELLOW IRIDITE)**
- CONNECTORS:
J1-J4: SMA FEMALE**



UNLESS OTHERWISE SPECIFIED		DATE	2/11/2019	WERLATONE SINCE 1965	17 Jon Barrett Rd Patterson, NY 12563
INTERRUPT DRAWING IAW MIL-STD-100	SD	DATE	2/11/2019		
DIMENSIONS PER ASME Y14.5M-2009	CHK	DATE	2/11/2019	TITLE	
PARENTHEetical INFO FOR REF ONLY	CS	DATE	2/11/2019	OUTLINE	
DIMENSIONS ARE IN INCHES	ENGR	DATE		SIZE	CAGE CODE
DIMENSIONAL LINES APPLY BEFORE PROCESSES	BW	DATE	9/13/1996	10407-501	DWG NO
TOLERANCES:	INFR	DATE		SCALE	1:1.5
ANGLES ± 2°	QA	DATE		REV	A
3 PL ± .005 [1.3]	RLSE	DATE		SHEET 1 OF 1	
2 PL ± .015 [3.8]					
REMOVE ALL BURRS AND SHARP EDGES R.01 MAX					
CONCENTRICITY MACHINED DIA: .002 FIM					
MACHINE TOOL MISMATCH .003 MAX					
NEXT ASSY	USED ON	APPLICATION	THIRD ANGLE PROJECTION		

Restriction on use, duplication, or disclosure of proprietary information. This document contains proprietary information which is the sole property of Werlatone, Inc. Werlatone, Inc. 17 Jon Barrett Road Patterson, NY 12563 T:(845)278-2220 F:(845)278-3440 sales@werlatone.com www.werlatone.com