

PRODUCT DATA SHEET

D10348

Werlatone® Mismatch Tolerant® High Power Broadband RF Combiners and Dividers will operate into High Load VSWR Conditions, for extended periods, without damage. With extensive experience as a supplier to military platforms worldwide **Werlatone®** designs its High Power Broadband Combiners, Power Dividers, and N-Way Combiners for proper operation in the most stringent operating conditions.

Features:

High Power Wide Bandwidths Small Size High Isolation Custom Designs Available

Electrical Specifications:

Frequency: 20 - 500 MHz
 Power: 1200 W CW
 Insertion Loss: 0.7 dB Max.
 VSWR: 1.40:1 Max.
 Phase Balance: $\pm 5^\circ$ Max.
 Amplitude Balance: 0.3 dB Max.
 Isolation: 18 dB Min.

Mechanical Specifications:

Type: Connectorized
 Material: Aluminum 6061-T6
 Surface Finish: Chem. Film Per MIL-DTL-5541F Type I Class 3 (Yellow Iridite) RoHS Compliant Available
 Operating Temperature: -55°C to +75°C
 Storage Temperature: -60°C to +85°C
 Weight: 5 lbs.
 Size: 7.5 x 7.0 x 2.25"

Connector Configurations:

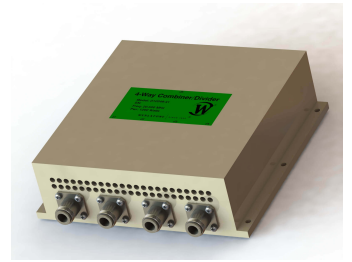
Model	Sum Port (J5)	Input/Output (J1-J4)
D10348-10	N Female	N Female
D10348-12	N Female	SMA Female
D10348-13	N Female	BNC Female
D10348-20	7/16 Female	N Female
D10348-41	SC Female	N Female

When specified, Werlatone® High Power Combiners and RF Dividers will tolerate full input failures on adjacent port(s). This insures that remaining transmitter(s) may continue to operate until the amplifier system can be properly shut down for maintenance. Choose your specific connector configuration from a list of options. Additional connector configurations for our High Power RF Combiners/Dividers, Non-Coherent Combiners, and N-Way Combiners are available upon request.



WERLATONE

Model D10348

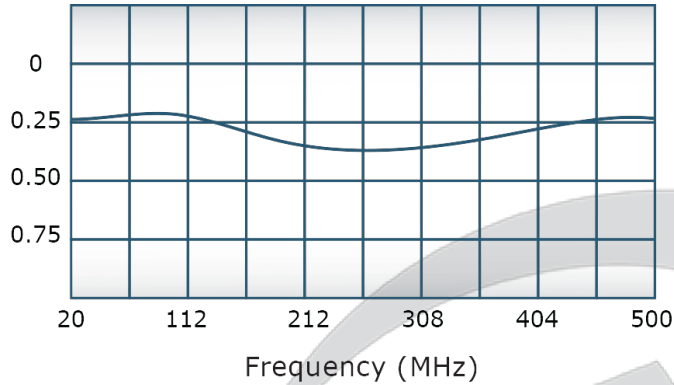


PRODUCT DATA SHEET

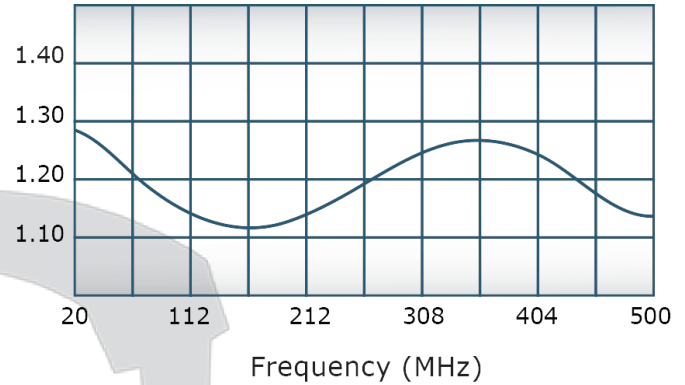
D10348

Performance Data (Specifications subject to change without notice):

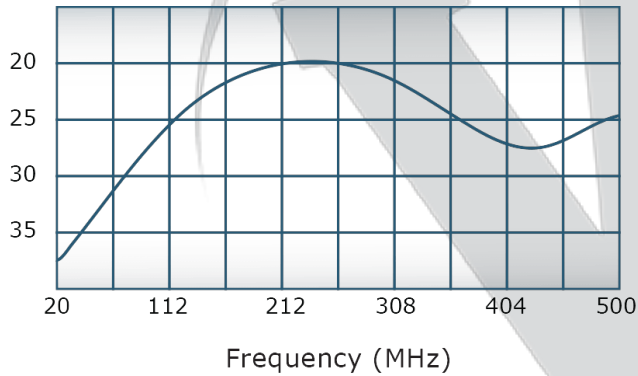
Insertion Loss:



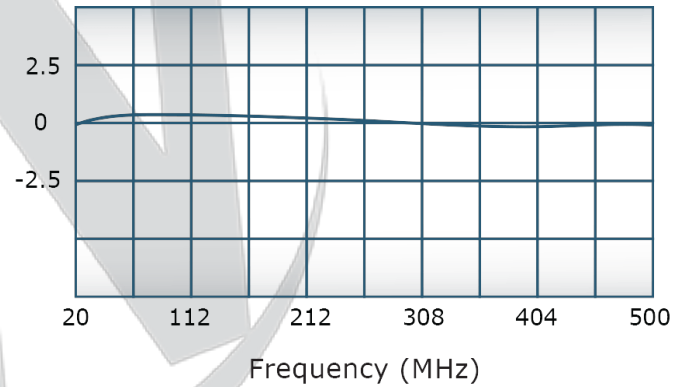
VSWR:



Isolation:



Phase Balance:



Restriction on use, duplication, or disclosure of proprietary information. This document contains proprietary information which is the sole property of Werlatone, Inc.

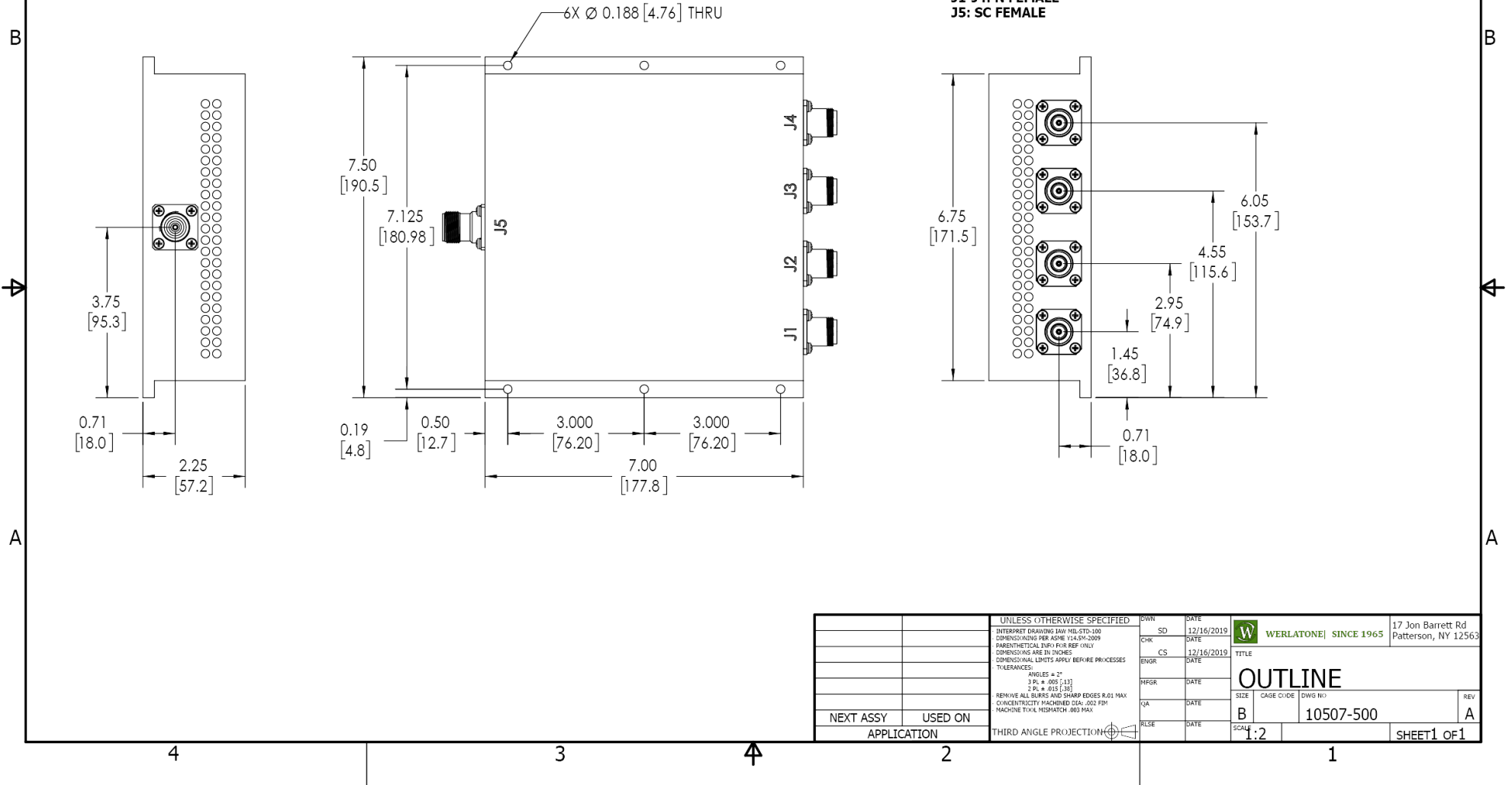
Werlatone, Inc. 17 Jon Barrett Road Patterson, NY 12563 T:(845)278-2220 F:(845)278-3440 sales@werlatone.com www.werlatone.com



RESTRICTION ON USE, DUPLICATION OR DISCLOSURE OF PROPRIETARY INFORMATION
 This document contains proprietary information which is the sole property of Werlatone, Inc.

REVISION HISTORY			
REV.	REVISION RECORD	DATE	APPROVED
A	ECN 9696	12/16/2019	RB

NOTES: UNLESS OTHERWISE SPECIFIED

- 1. MATERIAL: ALUMINUM 6061-T6**
- 2. FINISH: CHEM FILM PER MIL-DTL-5541F TYPE II CLASS 3 (YELLOW IRIDITE)**
- 3. CONNECTORS:
 J1-J4: N FEMALE
 J5: SC FEMALE**



		UNLESS OTHERWISE SPECIFIED		OWN	DATE						
			INTERPRET DRAWING 1001 MIL-STD-100	SD	DATE	12/16/2019		WERNERLANT SINCE 1965	17 Jon Barrett Rd		
			DIMENSIONS PER ASME Y14.5M-2009	CHK	DATE				Patterson, NY 12563		
			DIMENSIONAL INFO FOR REF ONLY								
			DIMENSIONS ARE IN INCHES	CS	DATE	12/16/2019					
			DIMENSIONAL LIMITS APPLY BEFORE FINISHES								
			TOLERANCES:	ENGR	DATE						
			ANGLES ± 2°				<div>OUTLINE</div>				
			3 PL ± .005 [13]								
			2 PL ± .015 [38]								
			REMOVE ALL BURRS AND SHARP EDGES R.01 MAX								
			CONCENTRICITY MACHINED DIA. .002 FIM	QA	DATE		SIZE	CAGE CODE	DWG NO		REV
			MACHINE TOOL MISMATCH .003 FIM								
NEXT ASSY	USED ON			RLSE	DATE		10507-500		A		
APPLICATION			THIRD ANGLE PROJECTION 			SCALE		.2		SHEET 1 OF 1	

Restriction on use, duplication, or disclosure of proprietary information. This document contains proprietary information which is the sole property of Werlatone, Inc.
 Werlatone, Inc. 17 Jon Barrett Road Patterson, NY 12563 T:(845)278-2220 F:(845)278-3440 sales@werlatone.com www.werlatone.com