

PRODUCT DATA SHEET

D10363

Werlatone® Mismatch Tolerant® High Power Broadband RF Combiners and Dividers will operate into High Load VSWR Conditions, for extended periods, without damage. With extensive experience as a supplier to military platforms worldwide **Werlatone®** designs its High Power Broadband Combiners, Power Dividers, and N-Way Combiners for proper operation in the most stringent operating conditions.

Features:

High Power Wide Bandwidths Small Size High Isolation Custom Designs Available

Electrical Specifications:

Frequency: 290 - 320 MHz
 Power: 400 W CW
 Insertion Loss: 0.3 dB Max.
 VSWR: 1.20:1 Max.
 Phase Balance: $\pm 5^\circ$ Max.
 Amplitude Balance: 0.2 dB Max.
 Isolation: 25 dB Min.

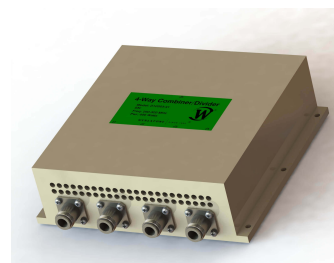
Mechanical Specifications:

Type: Connectorized
 Material: Aluminum 6061-T6
 Surface Finish: Chem. Film Per MIL-DTL-5541F Type I Class 3 (Yellow Iridite) RoHS Compliant Available
 Operating Temperature: -55°C to +75°C
 Storage Temperature: -60°C to +85°C
 Weight: 5.75 lbs.
 Size: 7.0 x 7.5 x 2.25"

Connector Configurations:

Model	Sum Port (J5)	Input/Output (J1-J4)
D10363-10	N Female	N Female
D10363-41	SC Female	N Female

When specified, Werlatone® High Power Combiners and RF Dividers will tolerate full input failures on adjacent port(s). This insures that remaining transmitter(s) may continue to operate until the amplifier system can be properly shut down for maintenance. Choose your specific connector configuration from a list of options. Additional connector configurations for our High Power RF Combiners/Dividers, Non-Coherent Combiners, and N-Way Combiners are available upon request.

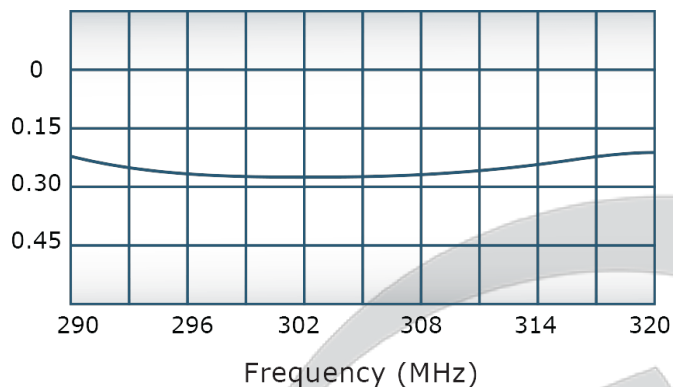


PRODUCT DATA SHEET

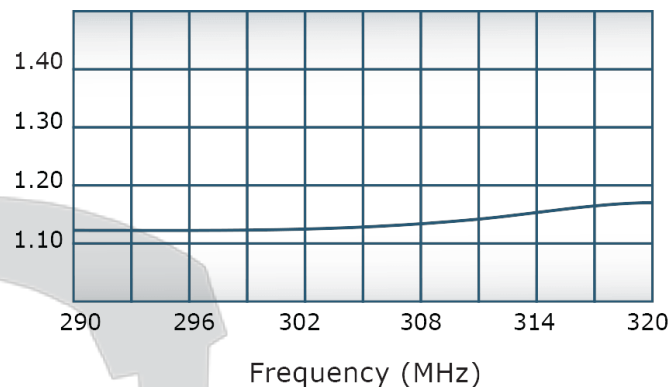
D10363

Performance Data (Specifications subject to change without notice):

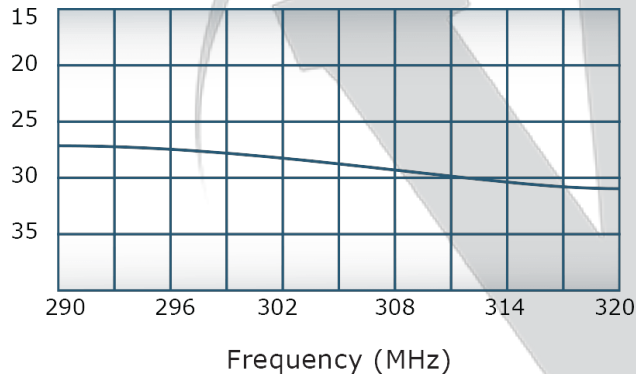
Insertion Loss:



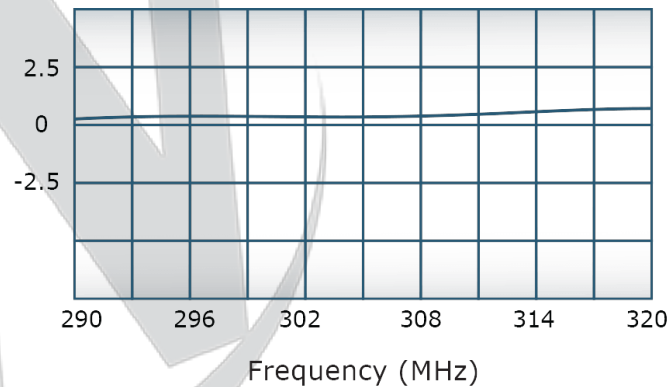
VSWR:



Isolation:



Phase Balance:



Restriction on use, duplication, or disclosure of proprietary information. This document contains proprietary information which is the sole property of Werlatone, Inc.

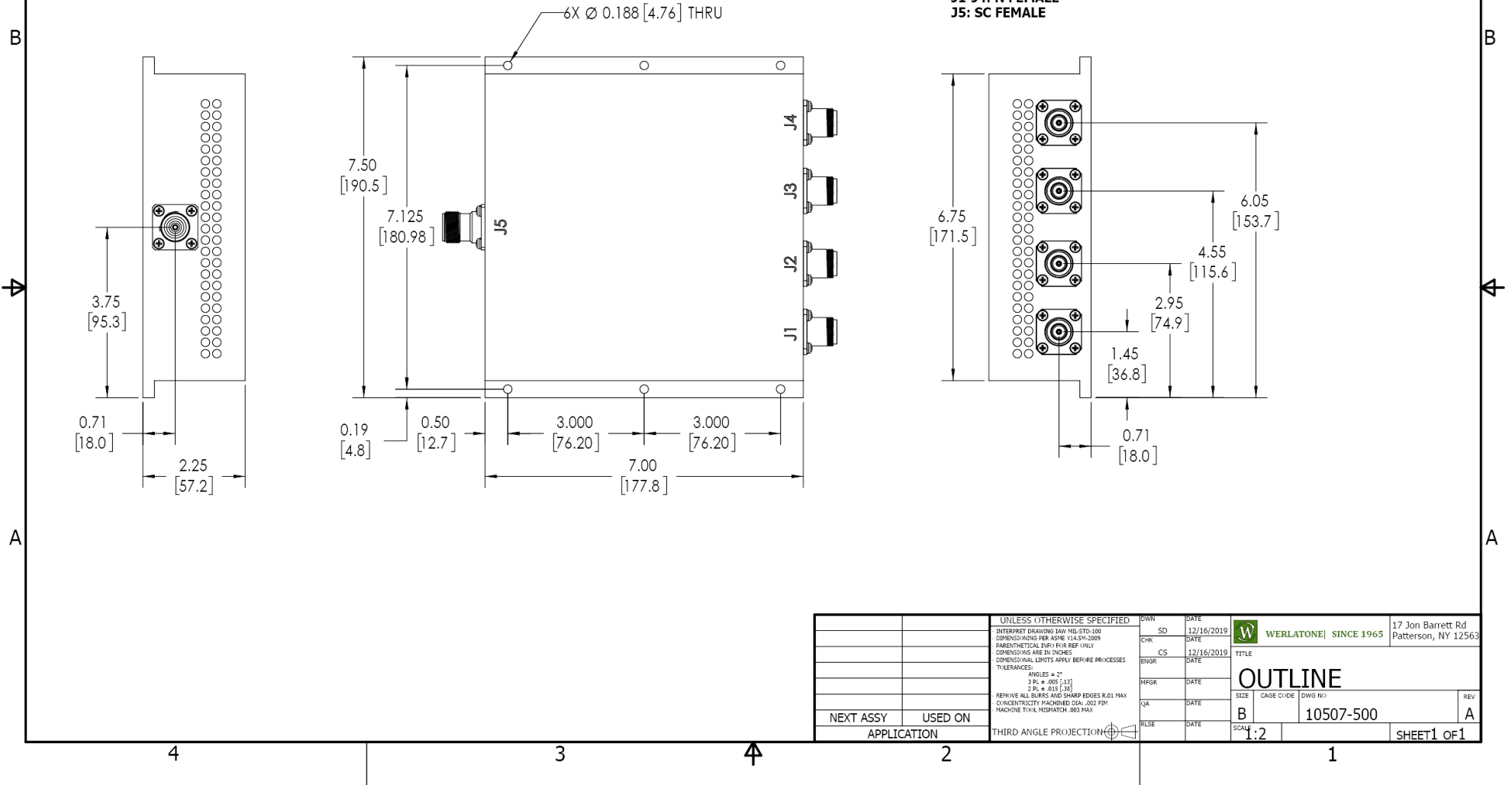
Werlatone, Inc. 17 Jon Barrett Road Patterson, NY 12563 T:(845)278-2220 F:(845)278-3440 sales@werlatone.com www.werlatone.com




RESTRICTION ON USE, DUPLICATION OR DISCLOSURE OF PROPRIETARY INFORMATION
 This document contains proprietary information which is the sole property of Werlatone, Inc.

REVISION HISTORY			
REV.	REVISION RECORD	DATE	APPROVED
A	ECN 9696	12/16/2019	RB

NOTES: UNLESS OTHERWISE SPECIFIED

- 1. MATERIAL: ALUMINUM 6061-T6**
- 2. FINISH: CHEM FILM PER MIL-DTL-5541F TYPE II CLASS 3 (YELLOW IRIDITE)**
- 3. CONNECTORS:**
J1-J4: N FEMALE
J5: SC FEMALE



UNLESS OTHERWISE SPECIFIED		DWN	DATE	 WERLATONE SINCE 1965		17 Jon Barrett Rd Patterson, NY 12563		
INTERPRET DRAWING IN ACCORDANCE WITH MIL-STD-100		SD	12/16/2019					
DIMENSIONS PER ASME Y14.5M-2009		CHK	DATE					
PARENTHESES FOR REF ONLY		CS	12/16/2019					
DIMENSIONS ARE IN INCHES		TITLE		OUTLINE				
DIMENSIONAL LIMITS APPLY BEFORE PRIORITIES		ENGR	DATE					
TOLERANCES:		INFR	DATE	SIZE CAGE CODE DWG NO				REV
ANGLES ± 2°		QA	DATE					
3 PL ± .005 [13]		RLSE		SCALE		10507-500		A
2 PL ± .015 [38]								
REMOVE ALL BURRS AND SHARP EDGES R.01 MAX		THIRD ANGLE PROJECTION 						
CONCENTRICITY MACHINED DIA. .002 FIM								
MACHINE TOOL MISMATCH .003 FIM								
NEXT ASSY	USED ON	APPLICATION						
		SHEET1 OF1						

Restriction on use, duplication, or disclosure of proprietary information. This document contains proprietary information which is the sole property of Werlatone, Inc.
 Werlatone, Inc. 17 Jon Barrett Road Patterson, NY 12563 T:(845)278-2220 F:(845)278-3440 sales@werlatone.com www.werlatone.com