

PRODUCT DATA SHEET

D10820

Werlatone® Mismatch Tolerant® High Power Broadband RF Combiners and Dividers will operate into High Load VSWR Conditions, for extended periods, without damage. With extensive experience as a supplier to military platforms worldwide **Werlatone®** designs its High Power Broadband Combiners, Power Dividers, and N-Way Combiners for proper operation in the most stringent operating conditions.

Features:

High Power Wide Bandwidths Small Size High Isolation Custom Designs Available

Electrical Specifications:

Frequency: 800 - 2000 MHz
 Power: 1500 W CW
 Insertion Loss: 0.4 dB Max.
 VSWR: 1.35:1 Max.
 Phase Balance: $\pm 5^\circ$ Max.
 Amplitude Balance: 0.25 dB Max.
 Isolation: 11 dB Min.

Mechanical Specifications:

Type: Connectorized
 Material: Aluminum 6061-T6
 Surface Finish: Chem. Film Per MIL-DTL-5541F Type I Class 3 (Yellow Iridite) RoHS Compliant Available
 Operating Temperature: -55°C to +75°C
 Storage Temperature: -60°C to +85°C
 Weight: 2 lbs. 12 oz.
 Size: 5.5 x 4.25 x 1.6"

Connector Configurations:

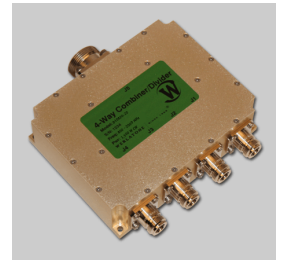
Model	Sum Port (J1)	Input/Output (J2-J5)
D10820-20	7/16 Female	N Female

When specified, Werlatone® High Power Combiners and RF Dividers will tolerate full input failures on adjacent port(s). This insures that remaining transmitter(s) may continue to operate until the amplifier system can be properly shut down for maintenance. Choose your specific connector configuration from a list of options. Additional connector configurations for our High Power RF Combiners/Dividers, Non-Coherent Combiners, and N-Way Combiners are available upon request.



WERLATONE

Model D10820

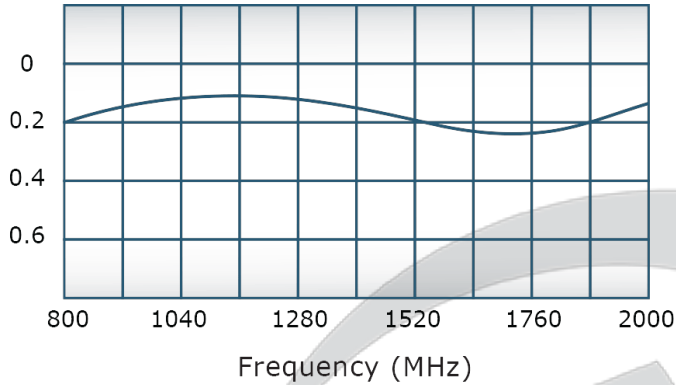


PRODUCT DATA SHEET

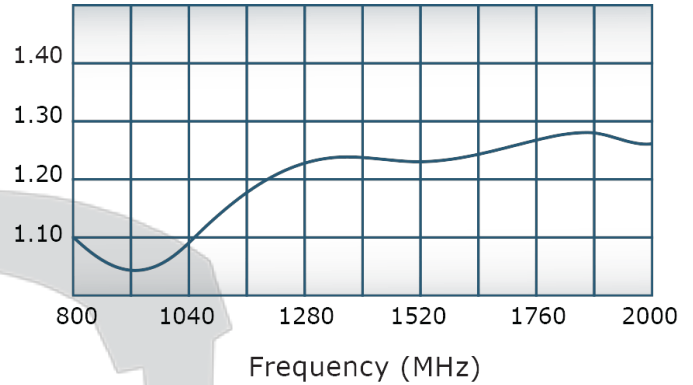
D10820

Performance Data (Specifications subject to change without notice):

Coupling:



VSWR:

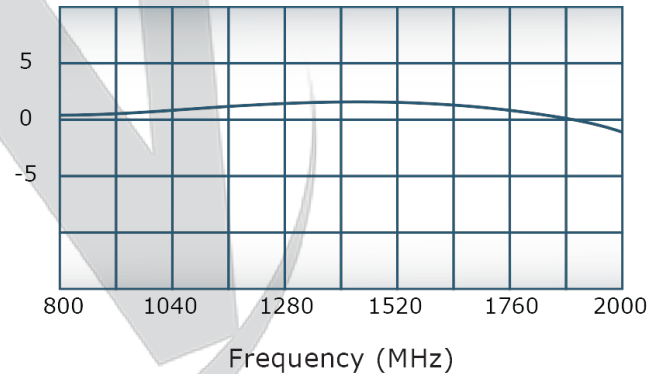


Since 1965:



SINCE 1965

Phase Balance:

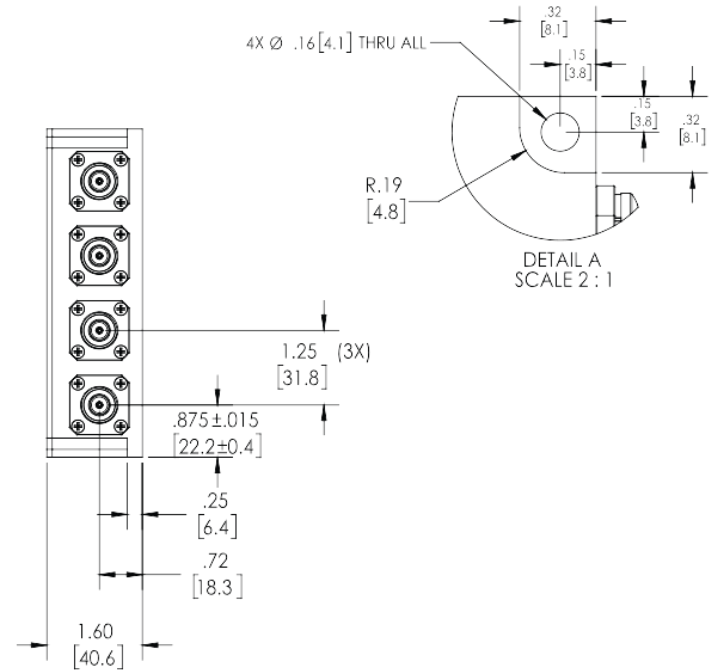
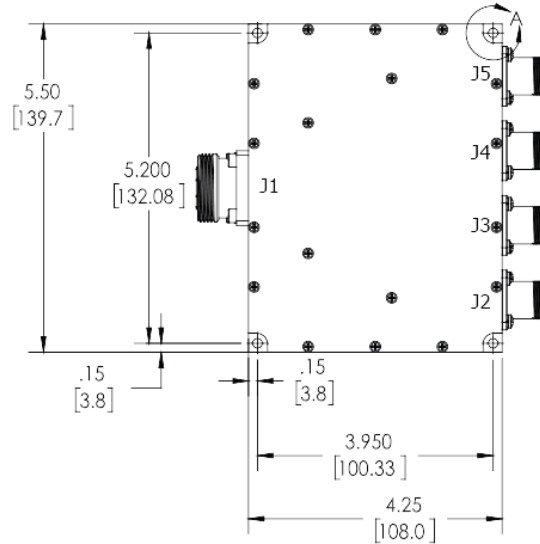
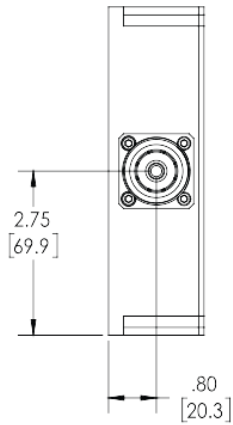




Restriction on use, duplication, or disclosure of proprietary information. This document contains proprietary information which is the sole property of Werlatone, Inc.

Werlatone, Inc. 17 Jon Barrett Road Patterson, NY 12563 T:(845)278-2220 F:(845)278-3440 sales@werlatone.com www.werlatone.com

RESTRICTION ON USE, DUPLICATION OR DISCLOSURE OF PROPRIETARY INFORMATION
This document contains proprietary information which is the sole property of Werlatone, Inc.

REVISIONS			
REV.	REVISION RECORD	DATE	APPROVED
-	INITIAL RELEASE	3/1/2013	BW
A	ECN 8563	2/14/2014	BW
B	ECN 9844	10/3/2019	BW



		• UNLESS OTHERWISE SPECIFIED		DWG DATE 3/1/2013 CHK DATE CS 3/1/2013 ENGR DATE PMGR DATE QA DATE RLSE DATE	 WERLATONE SINCE 1965	17 Jon Barrett Rd Patterson, NY 12563				
		• INTERPRET DRAWING IN ACCORDANCE WITH ISO 1502				TITLE D9343 4-WAY COMBINER/DIVIDER				
		• DIMENSIONING PER ASME Y14.5M-2009					SIZE CAGE CODE DWG NO B 28812 21008-500			
		• DIMENSIONAL UNITS ARE IN INCHES (mm)						REV B		
		• DIMENSIONAL UNITS APPLY BEFORE PROCESSING								
		• TOLERANCES								
		ANGLES ± .2° 3 PL ± .005 [13] 2 PL ± .015 [38]								
D9811-20				THIRD ANGLE PROJECTION 						
21008-300A		D9343-20								
NEXT ASSY USED ON										
APPLICATION				SHEET 1 OF 1						

Restriction on use, duplication, or disclosure of proprietary information. This document contains proprietary information which is the sole property of Werlatone, Inc.
Werlatone, Inc. 17 Jon Barrett Road Patterson, NY 12563 T:(845)278-2220 F:(845)278-3440 sales@werlatone.com www.werlatone.com