

PRODUCT DATA SHEET

D5300

Werlatone® Mismatch Tolerant® High Power Broadband RF Combiners and Dividers will operate into High Load VSWR Conditions, for extended periods, without damage. With extensive experience as a supplier to military platforms worldwide **Werlatone®** designs its High Power Broadband Combiners, Power Dividers, and N-Way Combiners for proper operation in the most stringent operating conditions.

Features:

High Power Wide Bandwidths Small Size High Isolation Custom Designs Available

Electrical Specifications:

Frequency: 100 - 500 MHz
 Power: 1200 W CW
 Insertion Loss: 0.5 dB Max.
 VSWR: 1.40:1 Max.
 Phase Balance: $\pm 5^\circ$ Max.
 Amplitude Balance: 0.25 dB Max.
 Isolation: 20 dB Min.

Mechanical Specifications:

Type: Connectorized
 Material: Aluminum 6061-T6
 Surface Finish: Chem. Film Per MIL-DTL-5541F Type I Class 3 (Yellow Iridite) RoHS Compliant Available
 Operating Temperature: -55°C to +75°C
 Storage Temperature: -60°C to +85°C
 Weight: 4.75 lbs.
 Size: 7.5 x 7.0 x 2.25"

Connector Configurations:

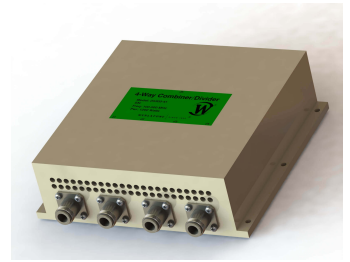
Model	Sum Port (J5)	Input/Output (J1-J4)
D5300-10	N Female	N Female
D5300-20	7/16 Female	N Female
D5300-41	SC Female	N Female

When specified, Werlatone® High Power Combiners and RF Dividers will tolerate full input failures on adjacent port(s). This insures that remaining transmitter(s) may continue to operate until the amplifier system can be properly shut down for maintenance. Choose your specific connector configuration from a list of options. Additional connector configurations for our High Power RF Combiners/Dividers, Non-Coherent Combiners, and N-Way Combiners are available upon request.



WERLATONE

Model D5300

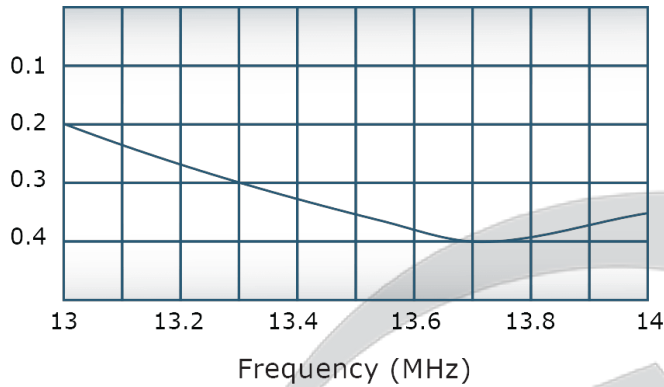


PRODUCT DATA SHEET

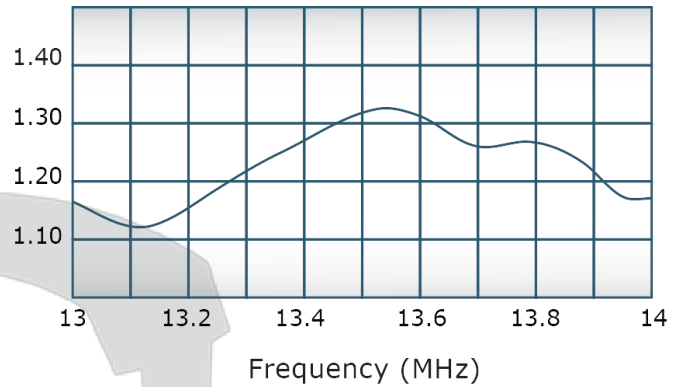
D5300

Performance Data (Specifications subject to change without notice):

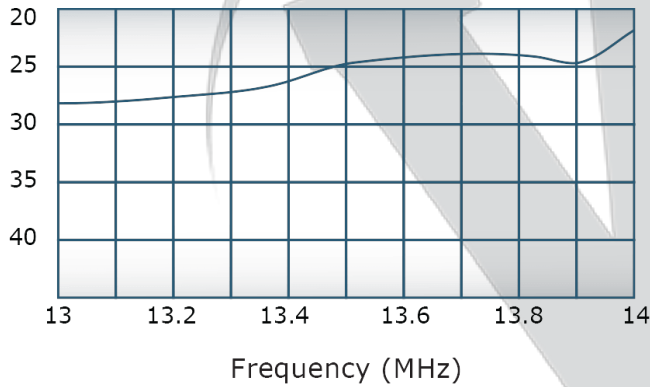
Insertion Loss:



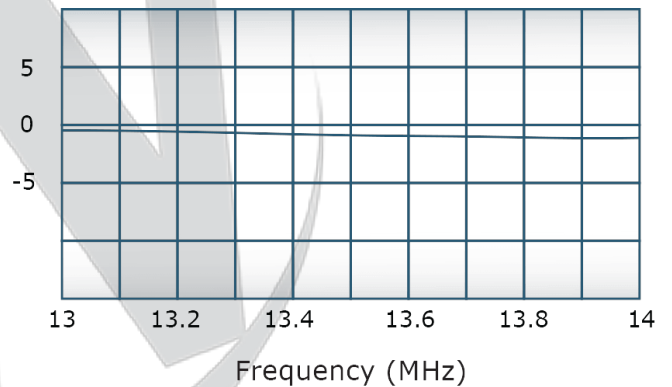
VSWR:



Isolation:



Phase Balance:



Restriction on use, duplication, or disclosure of proprietary information. This document contains proprietary information which is the sole property of Werlatone, Inc.

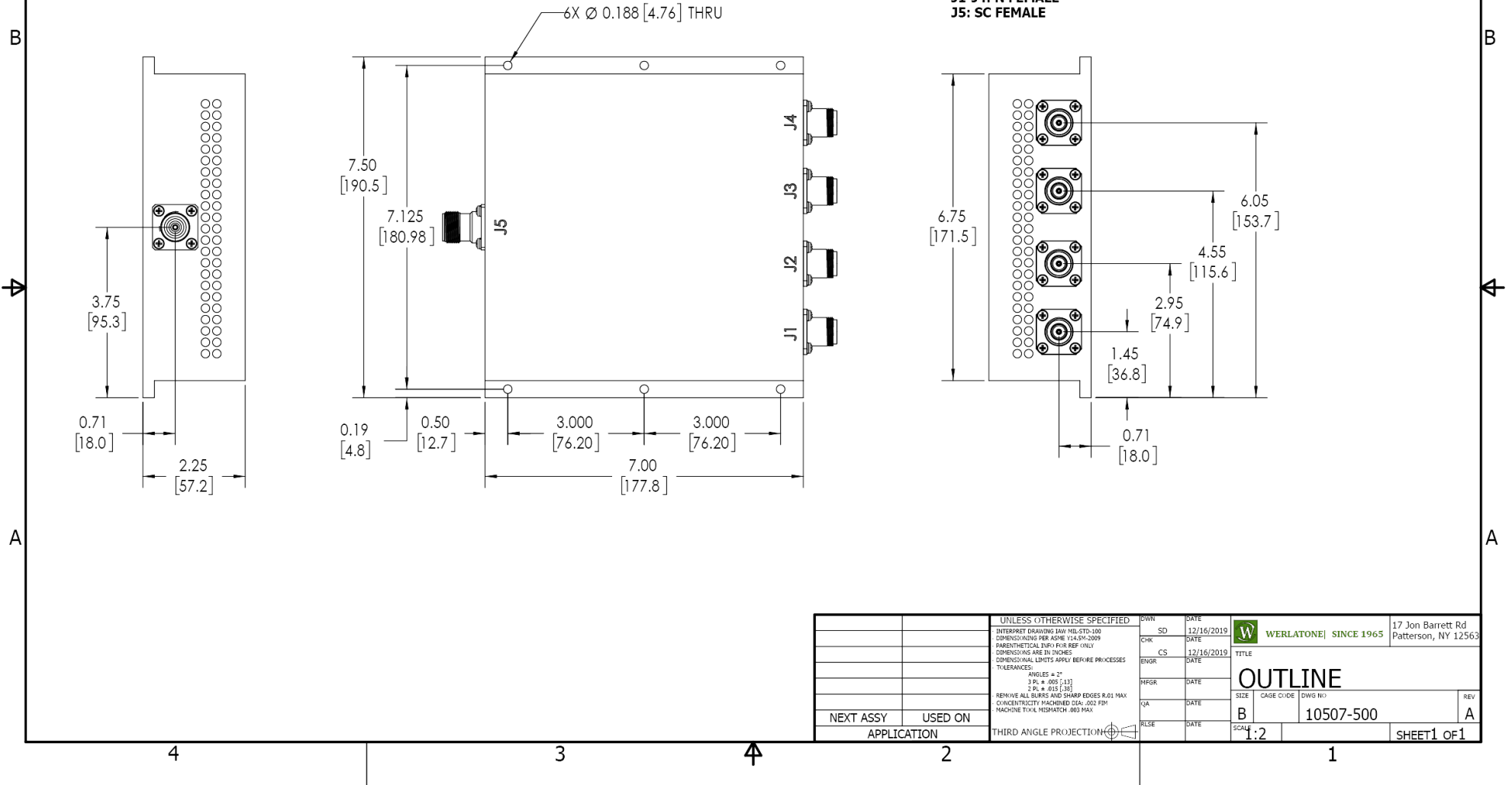
Werlatone, Inc. 17 Jon Barrett Road Patterson, NY 12563 T:(845)278-2220 F:(845)278-3440 sales@werlatone.com www.werlatone.com



RESTRICTION ON USE, DUPLICATION OR DISCLOSURE OF PROPRIETARY INFORMATION
 This document contains proprietary information which is the sole property of Werlatone, Inc.

REVISION HISTORY			
REV.	REVISION RECORD	DATE	APPROVED
A	ECN 9696	12/16/2019	RB

NOTES: UNLESS OTHERWISE SPECIFIED

- MATERIAL: ALUMINUM 6061-T6**
- FINISH: CHEM FILM PER MIL-DTL-5541F TYPE II CLASS 3 (YELLOW IRIDITE)**
- CONNECTORS:**
J1-J4: N FEMALE
J5: SC FEMALE



		UNLESS OTHERWISE SPECIFIED		OWN	DATE	 WERLATONE SINCE 1965	17 Jon Barrett Rd Patterson, NY 12563	
		INTERPRET DRAWING IN ACCORDANCE WITH MIL-STD-100 DIMENSIONS PER ASME Y14.5M-2009 PARENTHESES FOR REFERENCE ONLY DIMENSIONS ARE IN INCHES DIMENSIONAL LIMITS APPLY BEFORE FINISHES TOLERANCES: ANGLES ± 2° 3 PL ± .005 (13) 2 PL ± .015 (38) REMOVE ALL BURRS AND SHARP EDGES R.01 MAX CONCENTRICITY MACHINED DIA. .002 FIM MACHINE TOOL MISMATCH .003 FIM		SD	12/16/2019		TITLE OUTLINE	REV A
				CHK	DATE			
				CS	12/16/2019			
NEXT ASSY				ENGR	DATE	SIZE CAGE CODE DWG NO		
USED ON				INPR	DATE	B 10507-500		
APPLICATION				QA	DATE	SCALE		
				RLSE	DATE	1:2		
		THIRD ANGLE PROJECTION 						SHEET 1 OF 1

Restriction on use, duplication, or disclosure of proprietary information. This document contains proprietary information which is the sole property of Werlatone, Inc.
 Werlatone, Inc. 17 Jon Barrett Road Patterson, NY 12563 T:(845)278-2220 F:(845)278-3440 sales@werlatone.com www.werlatone.com