

PRODUCT DATA SHEET

D5575

Werlatone® Mismatch Tolerant® High Power Broadband RF Combiners and Dividers will operate into High Load VSWR Conditions, for extended periods, without damage. With extensive experience as a supplier to military platforms worldwide **Werlatone®** designs its High Power Broadband Combiners, Power Dividers, and N-Way Combiners for proper operation in the most stringent operating conditions.

Features:

High Power Wide Bandwidths Small Size High Isolation Custom Designs Available

Electrical Specifications:

Frequency: 20 - 500 MHz
 Power: 1000 W CW
 Insertion Loss: 0.7 dB Max.
 VSWR: 1.40:1 Max.
 Phase Balance: $\pm 5^\circ$ Max.
 Amplitude Balance: 0.3 dB Max.
 Isolation: 18 dB Min.

Mechanical Specifications:

Type: Connectorized
 Material: Aluminum 6061-T6
 Surface Finish: Chem. Film Per MIL-DTL-5541F Type I Class 3 (Yellow Iridite) RoHS Compliant Available
 Operating Temperature: -55°C to +75°C
 Storage Temperature: -60°C to +85°C
 Weight: 5 lbs.
 Size: 7.0 x 7.5 x 2.25"

Connector Configurations:

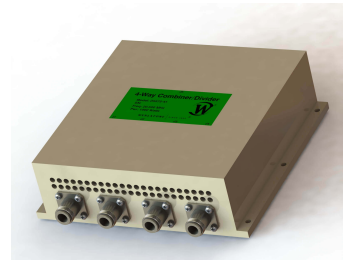
| Model | Sum Port (J5) | Input/Output (J1-J4) |
|----------|---------------|----------------------|
| D5575-10 | N Female | N Female |
| D5575-12 | N Female | SMA Female |
| D5575-13 | N Female | BNC Female |
| D5575-20 | 7/16 Female | N Female |
| D5575-41 | SC Female | N Female |

When specified, Werlatone® High Power Combiners and RF Dividers will tolerate full input failures on adjacent port(s). This insures that remaining transmitter(s) may continue to operate until the amplifier system can be properly shut down for maintenance. Choose your specific connector configuration from a list of options. Additional connector configurations for our High Power RF Combiners/Dividers, Non-Coherent Combiners, and N-Way Combiners are available upon request.



WERLATONE

Model D5575

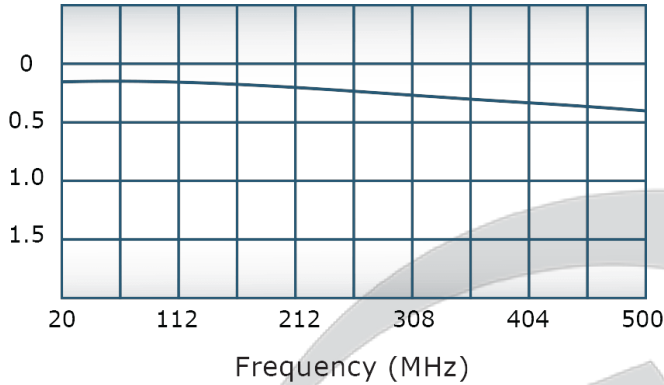


PRODUCT DATA SHEET

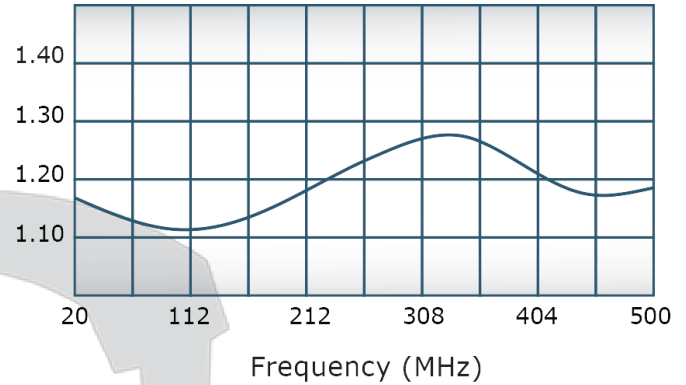
D5575

Performance Data (Specifications subject to change without notice):

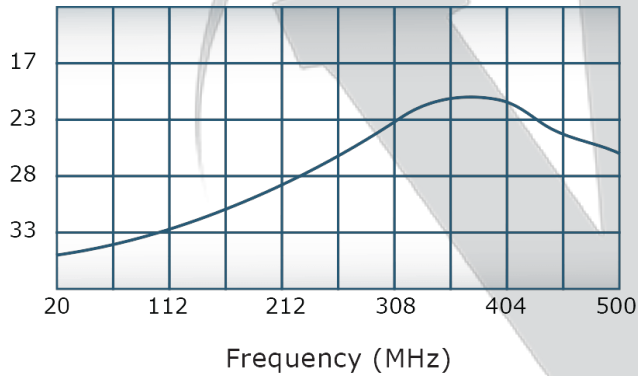
Insertion Loss:



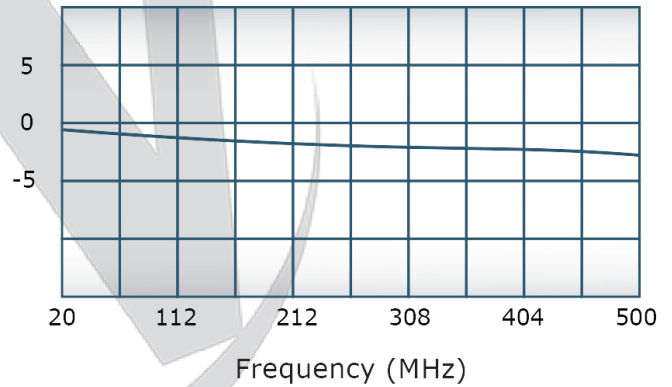
VSWR:



Isolation:



Phase Balance:



Restriction on use, duplication, or disclosure of proprietary information. This document contains proprietary information which is the sole property of Werlatone, Inc.

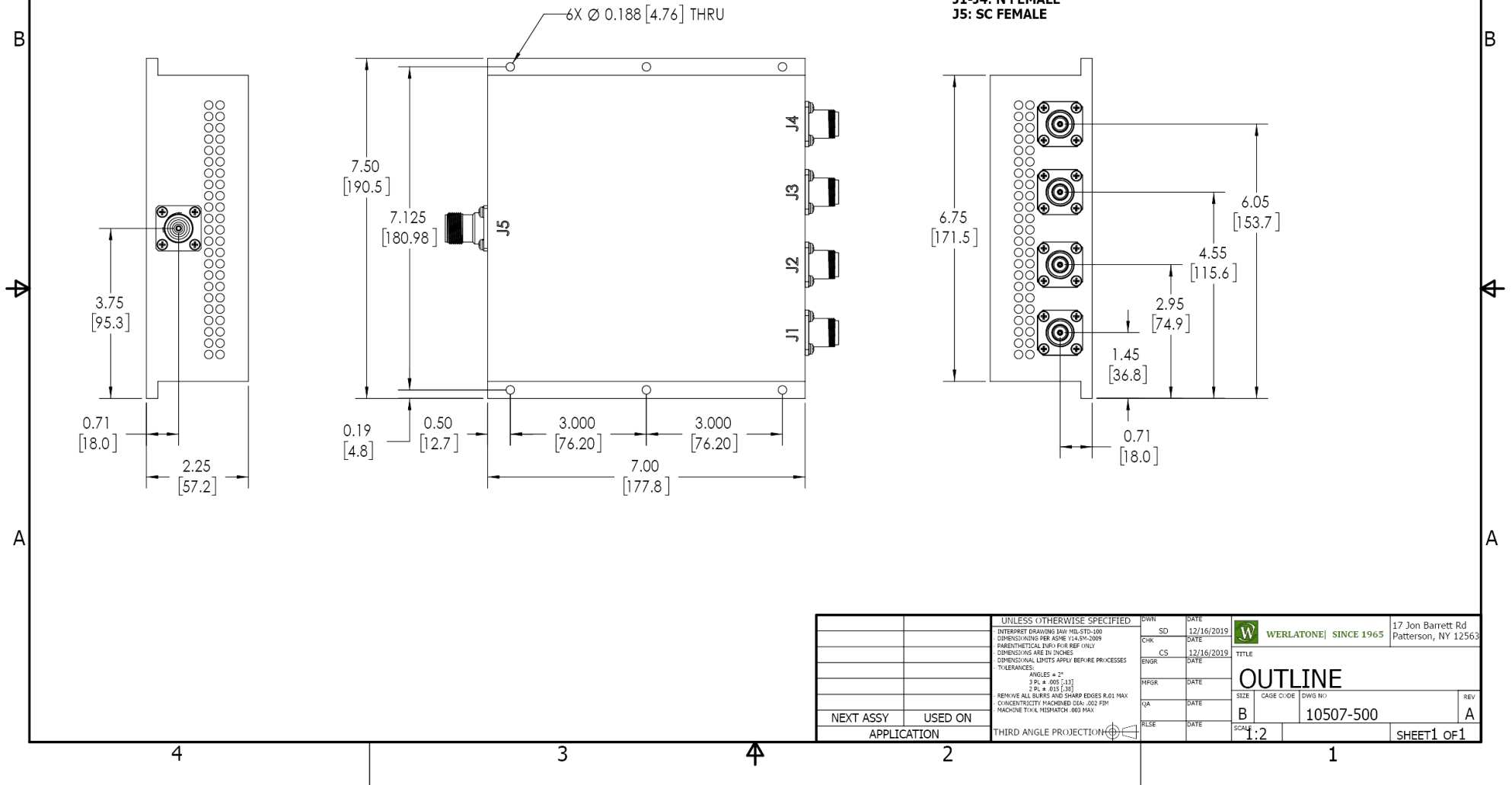
Werlatone, Inc. 17 Jon Barrett Road Patterson, NY 12563 T:(845)278-2220 F:(845)278-3440 sales@werlatone.com www.werlatone.com

RESTRICTION ON USE, DUPLICATION OR DISCLOSURE OF PROPRIETARY INFORMATION
 This document contains proprietary information which is the sole property of Werlatone, Inc.

| REVISION HISTORY | | | |
|------------------|-----------------|------------|----------|
| REV. | REVISION RECORD | DATE | APPROVED |
| A | ECN 9696 | 12/16/2019 | RB |

NOTES: UNLESS OTHERWISE SPECIFIED

- MATERIAL: ALUMINUM 6061-T6**
- FINISH: CHEM FILM PER MIL-DTL-5541F TYPE II CLASS 3 (YELLOW IRIDITE)**
- CONNECTORS:**
J1-J4: N FEMALE
J5: SC FEMALE



| | | | | | | | | | |
|-------------|--|--|--|------------------------|------------|---|--|--|--|
| | | UNLESS OTHERWISE SPECIFIED | | DOWN | DATE | <div><div></div><div>WERLATONE</div><div>SINCE 1965</div></div> | | 17 Jon Barrett Rd Patterson, NY 12563 | |
| | | INTERPRET DRAWING 1001 MIL-STD-100 | | SD | 12/16/2019 | | | | |
| | | DIMENSIONS PER ASME Y14.5M-2009 | | CHK | DATE | TITLE | | OUTLINE | |
| | | PARENTHESES FOR REF ONLY | | CS | 12/16/2019 | | | | |
| | | DIMENSIONS ARE IN INCHES | | ENGR | DATE | SIZE | | CAGE CODE | |
| | | DIMENSIONAL LIMITS APPLY BEFORE PRIORITIES | | INFR | DATE | | | | |
| | | TOLERANCES: | | QA | DATE | SCALE | | 10507-500 | |
| | | ANGLES ± 2° | | RLSE | DATE | | | | |
| | | 3 PL ± .005 [13] | | | | 2 | | SHEET 1 OF 1 | |
| | | 2 PL ± .015 [38] | | | | | | | |
| | | REMOVE ALL BURRS AND SHARP EDGES R.01 MAX | | | | | | | |
| | | CONCENTRICITY MACHINED DIA. .002 FIM | | | | | | | |
| | | MACHINE TOOL MISMATCH .003 FIM | | | | | | | |
| NEXT ASSY | | USED ON | | THIRD ANGLE PROJECTION | | | | | |
| APPLICATION | | | | | | | | | |

Restriction on use, duplication, or disclosure of proprietary information. This document contains proprietary information which is the sole property of Werlatone, Inc.
 Werlatone, Inc. 17 Jon Barrett Road Patterson, NY 12563 T:(845)278-2220 F:(845)278-3440 sales@werlatone.com www.werlatone.com