

## PRODUCT DATA SHEET

D6309

**Werlatone® Mismatch Tolerant®** High Power Broadband RF Combiners and Dividers will operate into High Load VSWR Conditions, for extended periods, without damage. With extensive experience as a supplier to military platforms worldwide **Werlatone®** designs its High Power Broadband Combiners, Power Dividers, and N-Way Combiners for proper operation in the most stringent operating conditions.

### Features:

High Power      Wide Bandwidths      Small Size      Custom Designs Available

### Electrical Specifications:

Frequency:	2300 - 2400 MHz
Power:	2000 W CW
Insertion Loss:	0.2 dB Max.
VSWR:	1.15:1 Max.
Phase Balance:	$\pm 5^\circ$ Max.
Amplitude Balance:	0.2 dB Max.
Isolation:	Non-Isolated

### Mechanical Specifications:

Type:	Connectorized
Material:	Aluminum 6061-T6
Surface Finish:	Chem. Film Per MIL-DTL-5541F Type I Class 3 (Yellow Iridite) RoHS Compliant Available
Operating Temperature:	-55°C to +75°C
Storage Temperature:	-60°C to +85°C
Size:	Radial

### Connector Configurations:

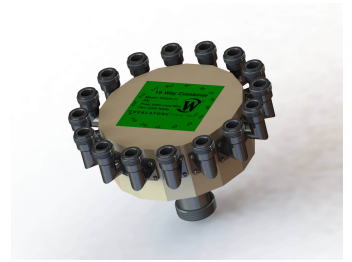
<b>Model</b>	<b>Sum Port (J17)</b>	<b>Input/Output (J1-J16)</b>
D6309-72	7/8" EIA	SMA Female

**When specified, Werlatone® High Power Combiners and RF Dividers** will tolerate full input failures on adjacent port(s). This insures that remaining transmitter(s) may continue to operate until the amplifier system can be properly shut down for maintenance. Choose your specific connector configuration from a list of options. Additional connector configurations for our High Power RF Combiners/Dividers, Non-Coherent Combiners, and N-Way Combiners are available upon request.



# WERLATONE

Model D6309

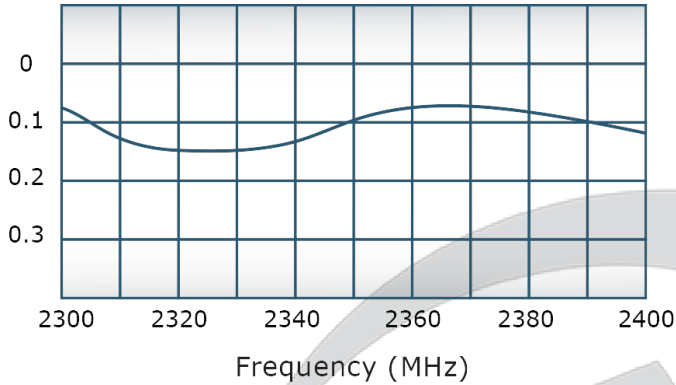


## PRODUCT DATA SHEET

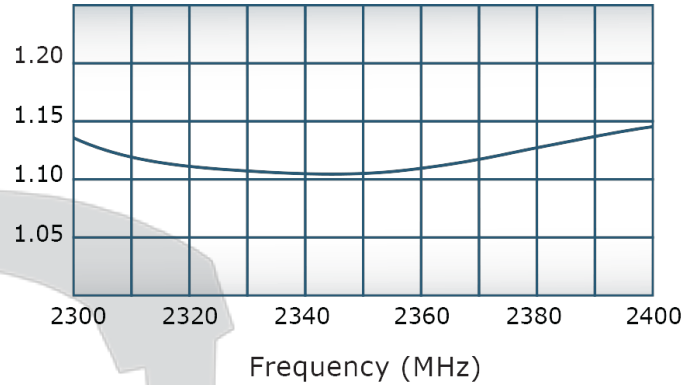
D6309

### Performance Data (Specifications subject to change without notice):

Insertion Loss:



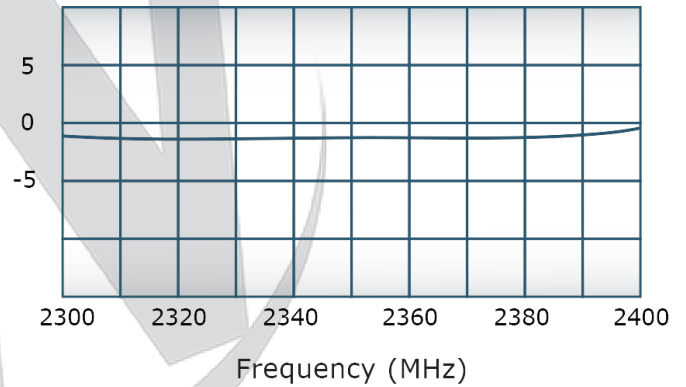
VSWR:



Since 1965:



Phase Balance:



**Restriction on use, duplication, or disclosure of proprietary information.** This document contains proprietary information which is the sole property of Werlatone, Inc.

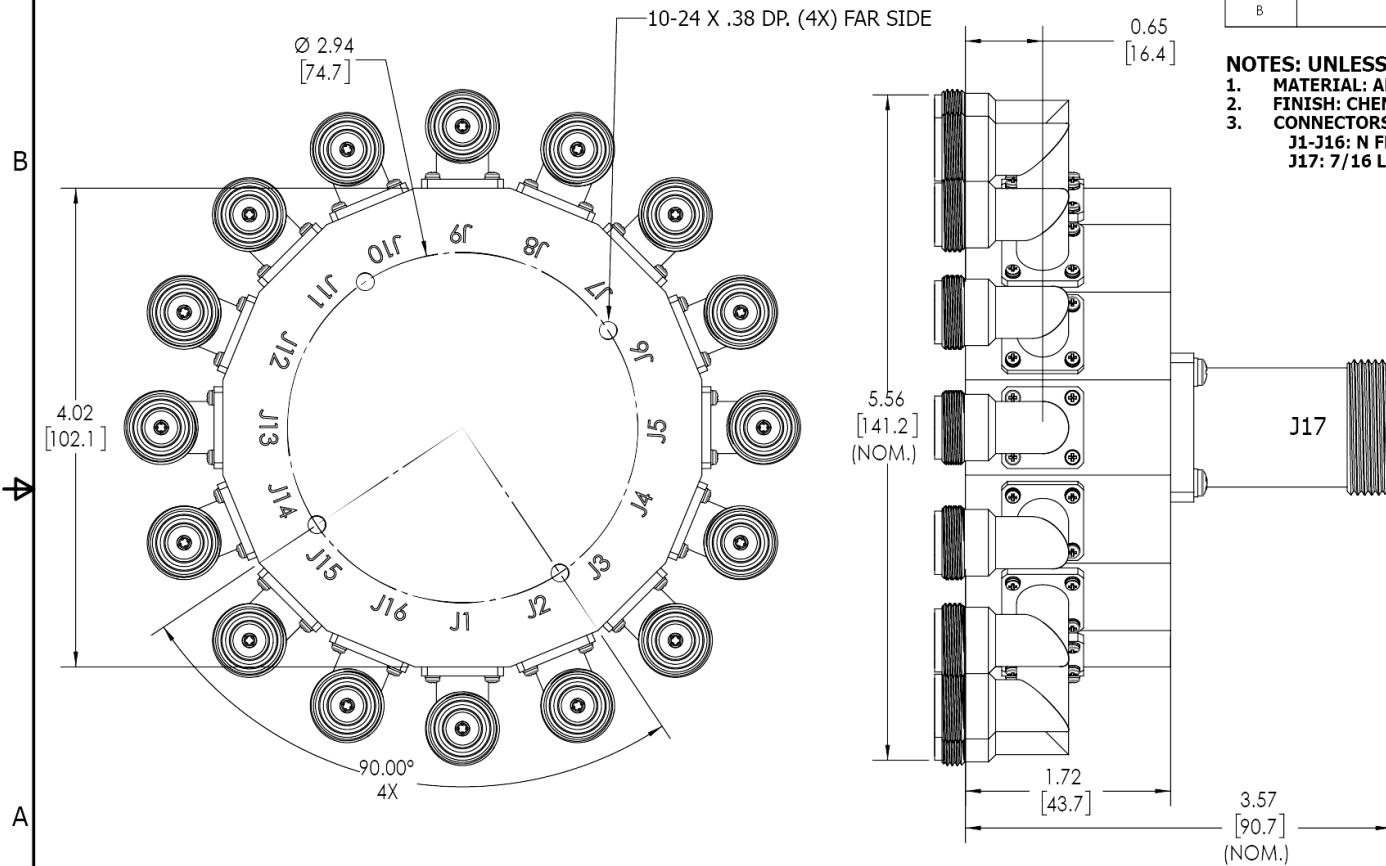
Werlatone, Inc. 17 Jon Barrett Road Patterson, NY 12563 T:(845)278-2220 F:(845)278-3440 sales@werlatone.com www.werlatone.com

**RESTRICTION ON USE, DUPLICATION OR DISCLOSURE OF PROPRIETARY INFORMATION**  
This document contains proprietary information which is the sole property of Werlatone, Inc.

REVISION HISTORY			
REV.	REVISION RECORD	DATE	APPROVED
A	ECN 7936	12/21/2012	CS
B	ECN 9696	9/12/2019	RB

**NOTES: UNLESS OTHERWISE SPECIFIED**

- MATERIAL: ALUMINUM 6061-T6**
- FINISH: CHEM FILM PER MIL-DTL-5541F TYPE I CLASS 3 (YELLOW IRIDITE)**
- CONNECTORS:**
  - J1-J16: N FEMALE (INPUT/OUTPUT)**
  - J17: 7/16 LONG BARREL (SUM PORT)**



UNLESS OTHERWISE SPECIFIED		OWN	DATE	<b>WERLATONE</b> SINCE 1965 17 Jon Barrett Rd Patterson, NY 12563
INTERPRET DRAWING 1001 MIL-STD-100	CHK	SD	9/12/2019	
DIMENSIONS PER ASME Y14.5M-2009	CS	DATE	9/12/2019	
PARENTHEetical INFO FOR REF ONLY	ENGR	DATE		
DIMENSIONS ARE IN INCHES	DATE	DATE		<b>OUTLINE</b> SIZE CAGE CODE DWG NO B 10627-501 SCALE 1:1 SHEET 1 OF 1
DIMENSIONAL LIMITS APPLY BEFORE PRIORITIES	DATE	DATE		
TOLERANCES:	DATE	DATE		
ANGLES ± 2°	DATE	DATE		
3 PL ± .005 (.13)	DATE	DATE		
2 PL ± .015 (.38)	DATE	DATE		
REMOVE ALL BURRS AND SHARP EDGES R.01 MAX	DATE	DATE		
CONCENTRICITY MACHINED DIA. .002 FIM	DATE	DATE		
MACHINE TOOL MISMATCH .003 MAX	DATE	DATE		
NEXT ASSY USED ON	THIRD ANGLE PROJECTION	DATE		
APPLICATION		DATE		

**Restriction on use, duplication, or disclosure of proprietary information.** This document contains proprietary information which is the sole property of Werlatone, Inc.  
Werlatone, Inc. 17 Jon Barrett Road Patterson, NY 12563 T:(845)278-2220 F:(845)278-3440 sales@werlatone.com www.werlatone.com