

## PRODUCT DATA SHEET

D9343

**Werlatone® Mismatch Tolerant®** High Power Broadband RF Combiners and Dividers will operate into High Load VSWR Conditions, for extended periods, without damage. With extensive experience as a supplier to military platforms worldwide **Werlatone®** designs its High Power Broadband Combiners, Power Dividers, and N-Way Combiners for proper operation in the most stringent operating conditions.

### Features:

High Power      Wide Bandwidths      Small Size      High Isolation      Custom Designs Available

### Electrical Specifications:

Frequency: 1000 - 2500 MHz  
 Power: 1000 W CW  
 Insertion Loss: 0.5 dB Max.  
 VSWR: 1.35:1 Max.  
 Phase Balance:  $\pm 5^\circ$  Max.  
 Amplitude Balance: 0.25 dB Max.  
 Isolation: 10 dB Min.

### Mechanical Specifications:

Type: Connectorized  
 Material: Aluminum 6061-T6  
 Surface Finish: Chem. Film Per MIL-DTL-5541F Type I Class 3 (Yellow Iridite) RoHS Compliant Available  
 Operating Temperature: -55°C to +75°C  
 Storage Temperature: -60°C to +85°C  
 Weight: 2.625 lbs.  
 Size: 5.5 x 4.25 x 1.6"

### Connector Configurations:

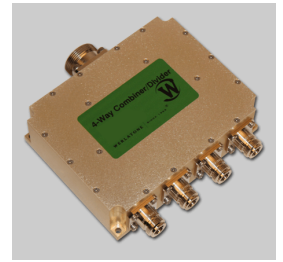
Model	Sum Port (J1)	Input/Output (J2-J5)
D9343-10	N Female	N Female
D9343-12	N Female	SMA
D9343-20	7/16 Female	N Female

**When specified, Werlatone® High Power Combiners and RF Dividers** will tolerate full input failures on adjacent port(s). This insures that remaining transmitter(s) may continue to operate until the amplifier system can be properly shut down for maintenance. Choose your specific connector configuration from a list of options. Additional connector configurations for our High Power RF Combiners/Dividers, Non-Coherent Combiners, and N-Way Combiners are available upon request.



# WERLATONE

Model D9343

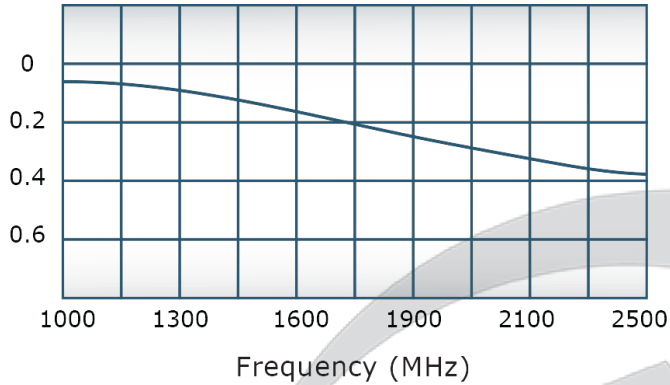


## PRODUCT DATA SHEET

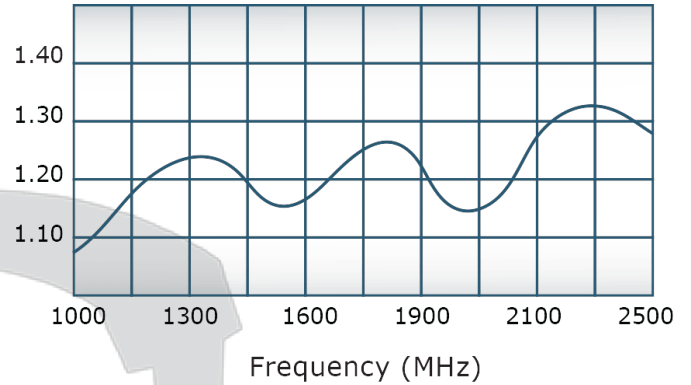
D9343

### Performance Data (Specifications subject to change without notice):

Insertion Loss:



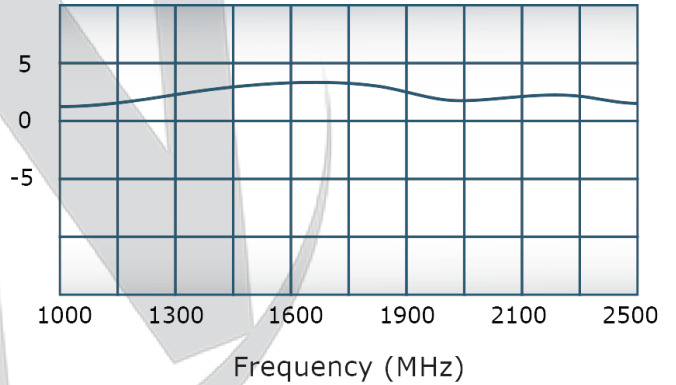
VSWR:



Since 1965:



Phase Balance:



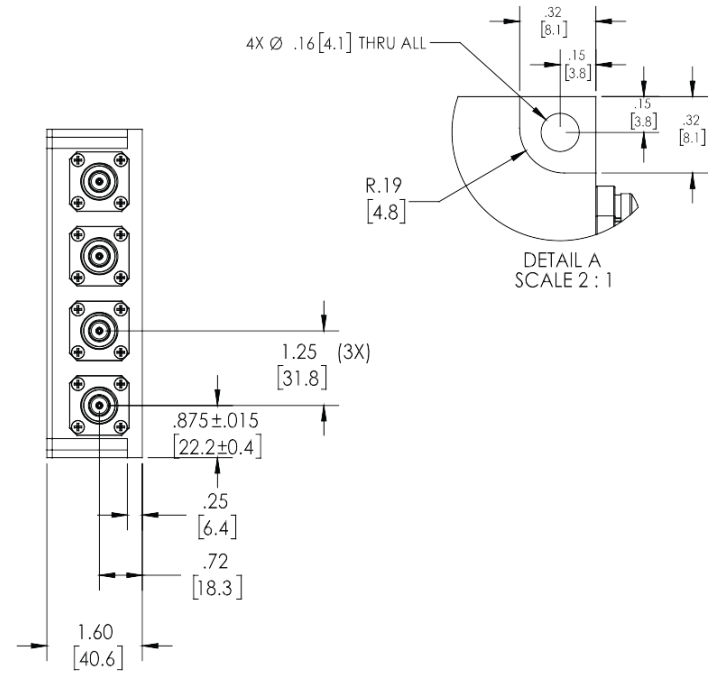
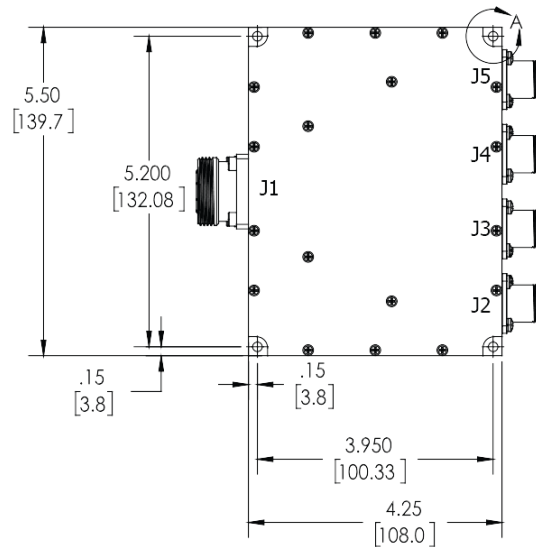
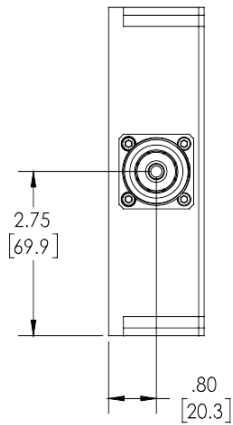
**Restriction on use, duplication, or disclosure of proprietary information.** This document contains proprietary information which is the sole property of Werlatone, Inc.



Werlatone, Inc. 17 Jon Barrett Road Patterson, NY 12563 T:(845)278-2220 F:(845)278-3440 sales@werlatone.com www.werlatone.com

**RESTRICTION ON USE, DUPLICATION OR DISCLOSURE OF PROPRIETARY INFORMATION**

This document contains proprietary information which is the sole property of Werlatone, Inc.

REVISIONS			
REV.	REVISION RECORD	DATE	APPROVED
-	INITIAL RELEASE	3/1/2013	BW
A	ECN 8563	2/14/2014	BW
B	ECN 9844	10/3/2019	BW



		UNLESS OTHERWISE SPECIFIED		OWN	DATE	 WERLATONE SINCE 1965		17 Jon Barrett Rd Patterson, NY 12563	
		<ul style="list-style-type: none"><li>• INTERPRET DRAWING IN ACCORDANCE WITH MIL-STD-100</li><li>• DIMENSIONING PER ASME Y14.5M-2009</li><li>• DIMENSIONAL UNITS ARE IN INCHES (IN) ONLY</li><li>• DIMENSIONS ARE IN INCHES (IN)</li><li>• DIMENSIONAL UNITS APPLY BEFORE PROCESSING</li><li>• TOLERANCES:<ul style="list-style-type: none"><li>ANGLES ± 2°</li><li>3 PL ± .005 (1.3)</li><li>2 PL ± .015 (1.3)</li></ul></li></ul>		GP	3/1/2013				
				CHK	DATE	TITLE			
				CS	3/1/2013				
				ENGR	DATE	SIZE CAGE CODE DWG NO			
				PRGR	DATE				
				QA	DATE	B 28812 21008-500			
				RLSE	DATE				
21008-300A		D9811-20				SCALE		1:2	
NEXT ASSY		D9343-20						B	
APPLICATION		THIRD ANGLE PROJECTION						SHEET 1 OF 1	

Restriction on use, duplication, or disclosure of proprietary information. This document contains proprietary information which is the sole property of Werlatone, Inc.  
Werlatone, Inc. 17 Jon Barrett Road Patterson, NY 12563 T:(845)278-2220 F:(845)278-3440 sales@werlatone.com www.werlatone.com