

PRODUCT DATA SHEET

D9667

Werlatone® Mismatch Tolerant® High Power Broadband RF Combiners and Dividers will operate into High Load VSWR Conditions, for extended periods, without damage. With extensive experience as a supplier to military platforms worldwide **Werlatone®** designs its High Power Broadband Combiners, Power Dividers, and N-Way Combiners for proper operation in the most stringent operating conditions.

Features:

High Power Wide Bandwidths Small Size High Isolation Custom Designs Available

Electrical Specifications:

Frequency: 2000 - 6000 MHz
 Power: 500 W CW
 Insertion Loss: 0.5 dB Max.
 VSWR: 1.50:1 Max.
 Phase Balance: $\pm 5^\circ$ Max.
 Amplitude Balance: 0.25 dB Max.
 Isolation: 15 dB Min.

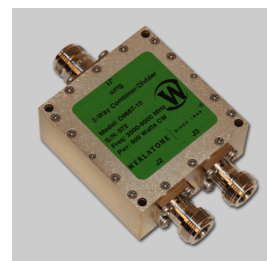
Mechanical Specifications:

Type: Connectorized
 Material: Aluminum 6061-T6
 Surface Finish: Chem. Film Per MIL-DTL-5541F Type I Class 3 (Yellow Iridite) RoHS Compliant Available
 Operating Temperature: -55°C to +75°C
 Storage Temperature: -60°C to +85°C
 Weight: 10 oz.
 Size: 2.52 x 2.4 x 1.16"

Connector Configurations:

Model	Sum Port (J1)	Input/Output (J2)	Input/Output (J3)
D9667-10	N Female	N Female	N Female
D9667-12	N Female	SMA	SMA
D9667-300	TNC	TNC	TNC

When specified, Werlatone® High Power Combiners and RF Dividers will tolerate full input failures on adjacent port(s). This insures that remaining transmitter(s) may continue to operate until the amplifier system can be properly shut down for maintenance. Choose your specific connector configuration from a list of options. Additional connector configurations for our High Power RF Combiners/Dividers, Non-Coherent Combiners, and N-Way Combiners are available upon request.

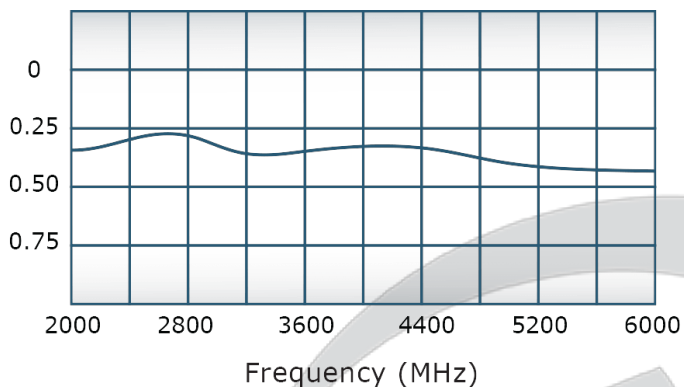


PRODUCT DATA SHEET

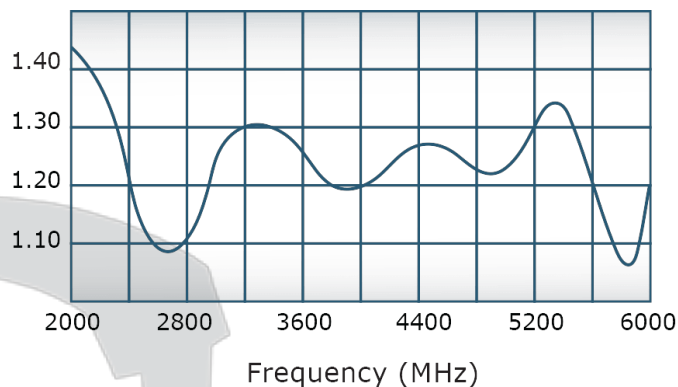
D9667

Performance Data (Specifications subject to change without notice):

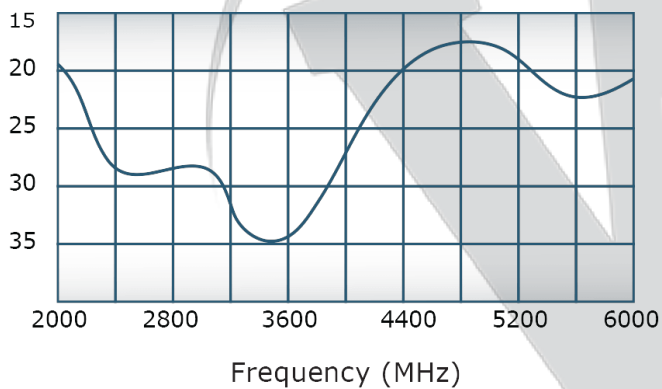
Insertion Loss:



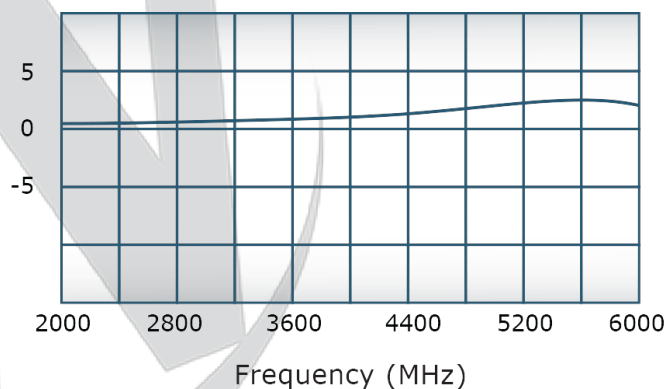
VSWR:



Isolation:



Phase Balance:

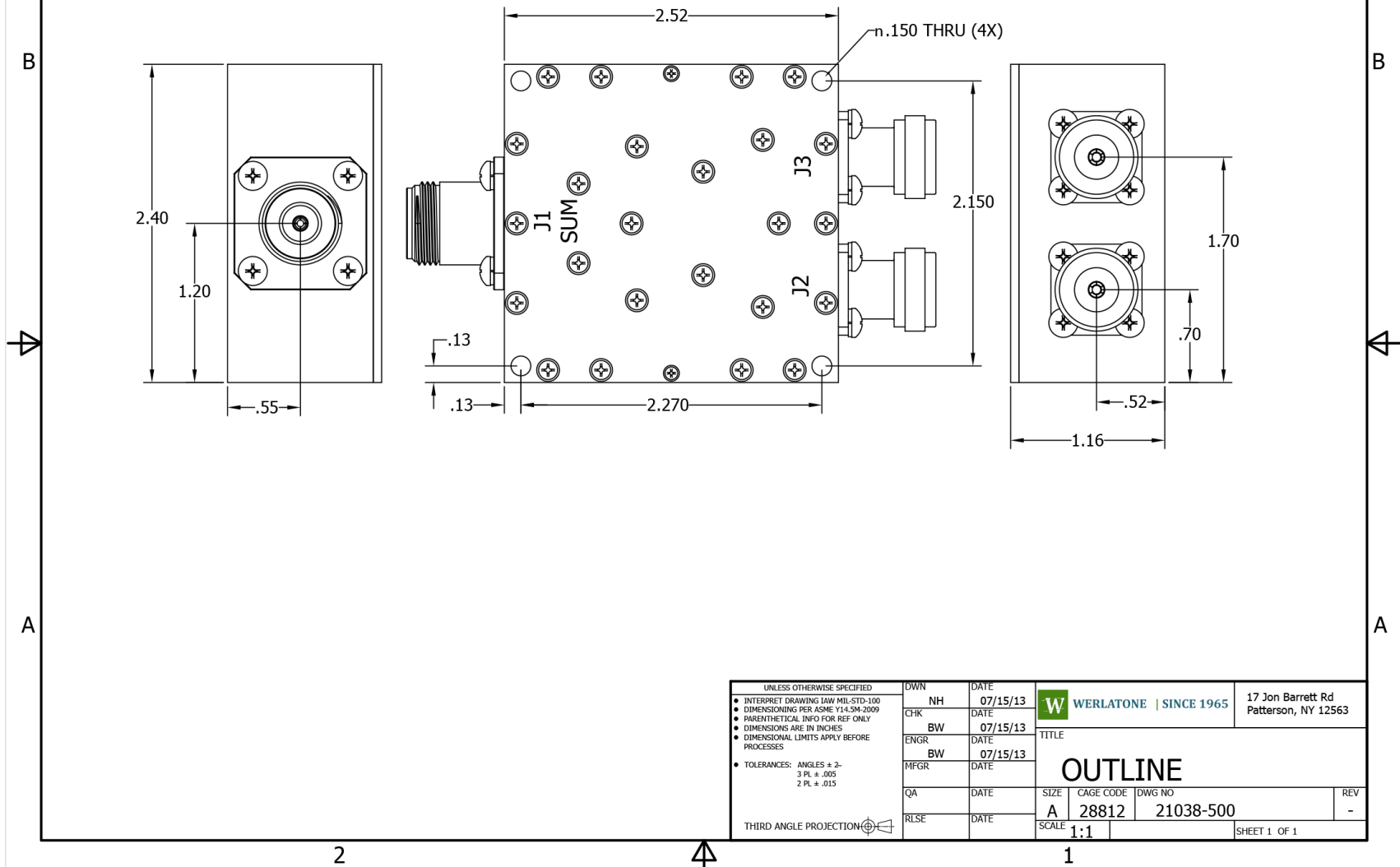




Restriction on use, duplication, or disclosure of proprietary information. This document contains proprietary information which is the sole property of Werlatone, Inc.

Werlatone, Inc. 17 Jon Barrett Road Patterson, NY 12563 T:(845)278-2220 F:(845)278-3440 sales@werlatone.com www.werlatone.com

RESTRICTION ON USE, DUPLICATION OR
DISCLOSURE OF PROPRIETARY INFORMATION
This document contains proprietary information
which is the sole property of Werlatone, Inc.

REVISION HISTORY			
REV	REVISION RECORD	DATE	APPROVED
-	INITIAL RLS	7/15/2013	BW



UNLESS OTHERWISE SPECIFIED		DWN	DATE	 WERLATONE SINCE 1965		17 Jon Barrett Rd Patterson, NY 12563		
• INTERPRET DRAWING IAW MIL-STD-100		NH	07/15/13					
• DIMENSIONING PER ASME Y14.5M-2009		CHK	DATE	TITLE				
• PARENTHEetical INFO FOR REF ONLY		BW	07/15/13					
• DIMENSIONS ARE IN INCHES		ENGR	DATE	OUTLINE				
• DIMENSIONAL LIMITS APPLY BEFORE PROCESSES		BW	07/15/13					
• TOLERANCES: ANGLES $\pm 2^\circ$ 3 PL $\pm .005$ 2 PL $\pm .015$		MFGR	DATE	SIZE				CAGE CODE
THIRD ANGLE PROJECTION 		QA	DATE	A		28812	21038-500	-
		RLSE	DATE	SCALE		1:1		SHEET 1 OF 1

Restriction on use, duplication, or disclosure of proprietary information. This document contains proprietary information which is the sole property of Werlatone, Inc.
Werlatone, Inc. 17 Jon Barrett Road Patterson, NY 12563 T:(845)278-2220 F:(845)278-3440 sales@werlatone.com www.werlatone.com