
PRODUCT DATA SHEET
D9810

Werlatone® Mismatch Tolerant® High Power Broadband RF Combiners and Dividers will operate into High Load VSWR Conditions, for extended periods, without damage. With extensive experience as a supplier to military platforms worldwide **Werlatone®** designs its High Power Broadband Combiners, Power Dividers, and N-Way Combiners for proper operation in the most stringent operating conditions.

Features:

High Power Wide Bandwidths Small Size Custom Designs Available

Electrical Specifications:

Frequency: 800 - 2500 MHz
Power: 600 W CW
Insertion Loss: 0.5 dB Max.
VSWR: 1.35:1 Max.
Phase Balance: $\pm 5^\circ$ Max.
Amplitude Balance: 0.25 dB Max.
Isolation: Non-Isolated

Mechanical Specifications:

Type: Connectorized
Material: Aluminum 6061-T6
Surface Finish: Chem. Film Per MIL-DTL-5541F Type I Class 3 (Yellow Iridite) RoHS Compliant Available
Operating Temperature: -55°C to +75°C
Storage Temperature: -60°C to +85°C
Size: 5.5 x 4.25 x 1.6"

Connector Configurations:

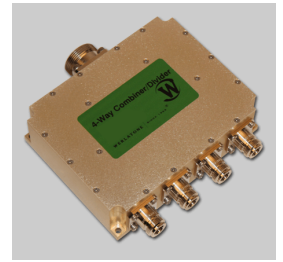
Model	Sum Port (J1)	Input/Output (J2-J5)
D9810-10	N Female	N Female
D9810-12	N Female	SMA
D9810-20	7/16 Female	N Female

When specified, Werlatone® High Power Combiners and RF Dividers will tolerate full input failures on adjacent port(s). This insures that remaining transmitter(s) may continue to operate until the amplifier system can be properly shut down for maintenance. Choose your specific connector configuration from a list of options. Additional connector configurations for our High Power RF Combiners/Dividers, Non-Coherent Combiners, and N-Way Combiners are available upon request.



WERLATONE

Model D9810

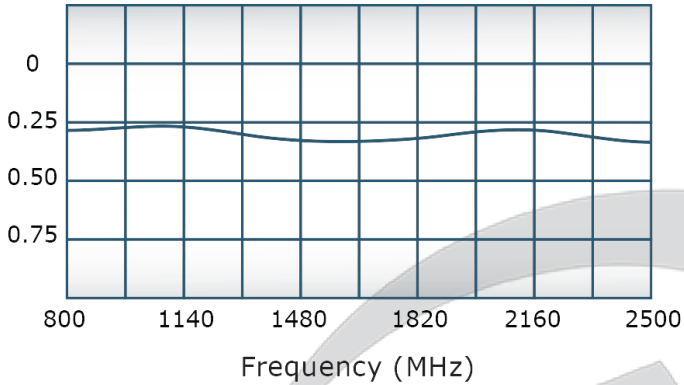


PRODUCT DATA SHEET

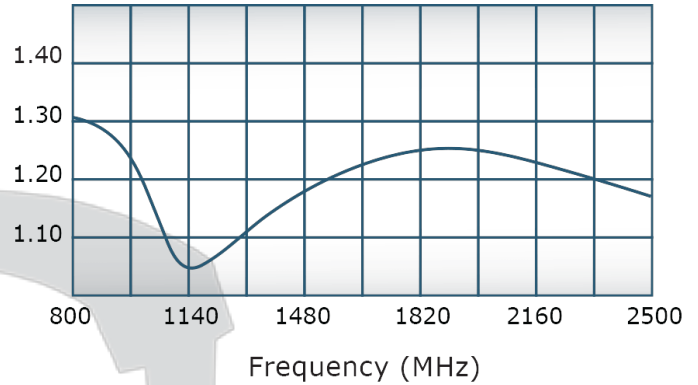
D9810

Performance Data (Specifications subject to change without notice):

Coupling:



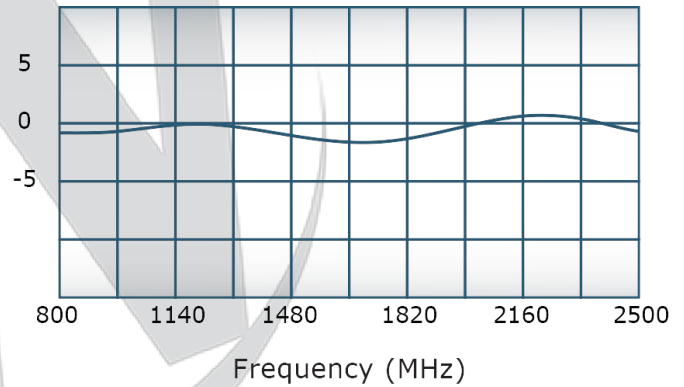
VSWR:



Since 1965:



Phase Balance:



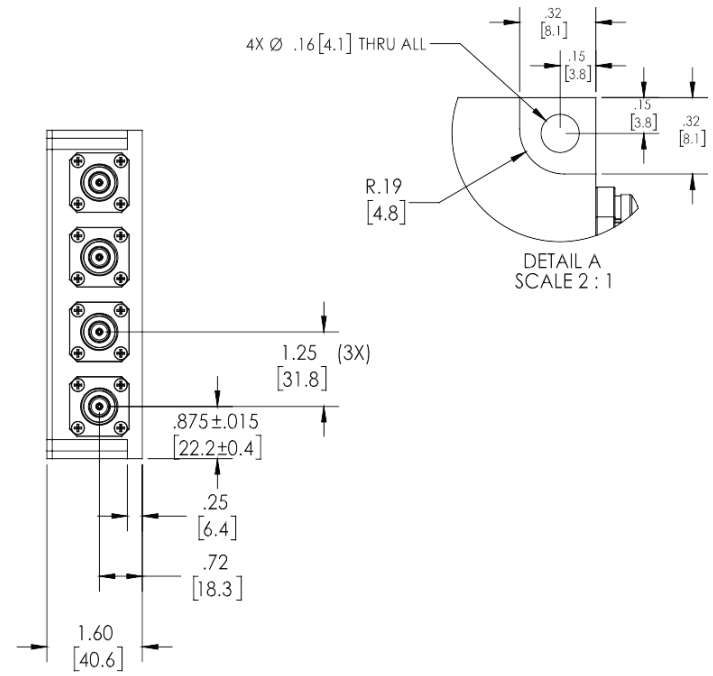
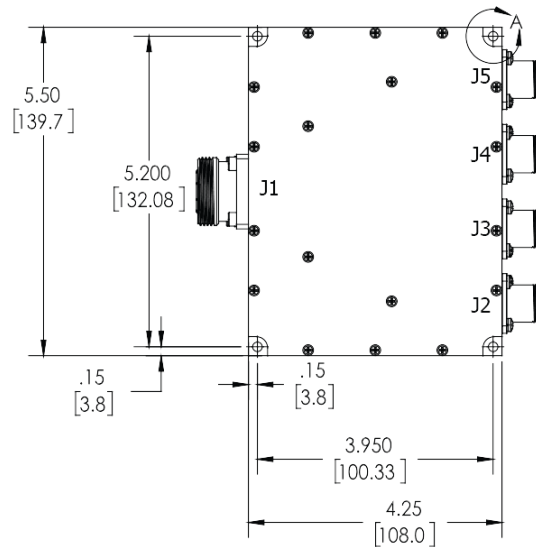
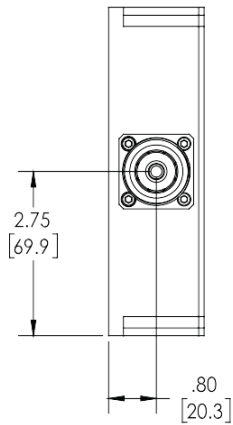
Restriction on use, duplication, or disclosure of proprietary information. This document contains proprietary information which is the sole property of Werlatone, Inc.



Werlatone, Inc. 17 Jon Barrett Road Patterson, NY 12563 T:(845)278-2220 F:(845)278-3440 sales@werlatone.com www.werlatone.com

RESTRICTION ON USE, DUPLICATION OR DISCLOSURE OF PROPRIETARY INFORMATION

This document contains proprietary information which is the sole property of Werlatone, Inc.

REVISIONS			
REV.	REVISION RECORD	DATE	APPROVED
-	INITIAL RELEASE	3/1/2013	BW
A	ECN 8563	2/14/2014	BW
B	ECN 9844	10/3/2019	BW



		UNLESS OTHERWISE SPECIFIED		OWN	DATE	<div> WERLATONE SINCE 1965</div> <div>17 Jon Barrett Rd Patterson, NY 12563</div>	
		• INTERPRET DRAWING IN ACCORDANCE WITH MIL-STD-100		GP	3/1/2013		
		• DIMENSIONING PER ASME Y14.3M-2009		CHK	DATE		
		• DIMENSIONAL UNITS ARE IN INCHES (IN) ONLY		CS	3/1/2013		
		• DIMENSIONS ARE IN INCHES (IN)		ENGR	DATE		
		• DIMENSIONAL LIMITS APPLY BEFORE PROCESSING					
		• TOLERANCES:					
		ANGLES ± 2°					
		3 PL ± .005 (.13)					
		2 PL ± .015 (.38)					
D9811-20				FIPSR	DATE		
21008-300A		D9343-20		QA	DATE		
NEXT ASSY		USED ON		RLSE	DATE		
APPLICATION		THIRD ANGLE PROJECTION					
				SIZE	CAGE CODE	DWG NO	REV
				B 28812	21008-500		B
				SCALE	1:2	SHEET 1 OF 1	

Restriction on use, duplication, or disclosure of proprietary information. This document contains proprietary information which is the sole property of Werlatone, Inc.
Werlatone, Inc. 17 Jon Barrett Road Patterson, NY 12563 T:(845)278-2220 F:(845)278-3440 sales@werlatone.com www.werlatone.com