

PRODUCT DATA SHEET

QH10738

Our patented 3 dB 90° Hybrid Couplers provide:

- Superior component performance starting at 3:1 Bandwidth.
- Thicker center boards for high power and increased repeatability.
- Bonded structures which eliminate any air gaps between substrates.
- More sections per bandwidth for better coupling flatness.
- Electrically shorter and physically smaller RF components.

Features:

High Power Wide Bandwidths Small Size Excellent Amplitude Balance

Electrical Specifications:

Frequency: 20 - 1000 MHz
 Power: 150 W CW
 Insertion Loss: 0.8 dB Max.
 VSWR: 1.40:1 Max.
 Phase Balance: $\pm 12^\circ$ dB Max.
 Amplitude Balance: ± 0.25 dB Max.
 Isolation: 20 dB Min.

Mechanical Specifications:

Material: Aluminum 6061-T6
 Surface Finish: Chem. Film Per MIL-DTL-5541F Type II Class 3 (Clear Iridite)
 Operating Temperature: -55°C to $+75^\circ\text{C}$
 Storage Temperature: -60°C to $+85^\circ\text{C}$
 Size: 3.0 x 2.75 x 1.0"

Port Configurations:

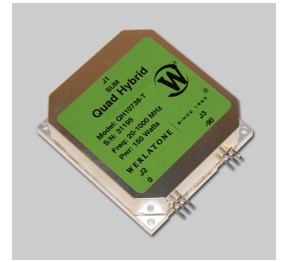
Model	Sum Port (J1)	0°, -90° (J2, J3)
QH10738-T	Tab	Tab

Werlatone's breakthrough technology allows us to build our existing line of Broadband 3 dB High Power 90° Hybrid Couplers. Connectorized 3 dB 90° Hybrid Coupler models are available with a choice of connectors. Several of our existing High Power 3 dB 90° RF Couplers are three port designs, wherein the difference port is internally terminated with a high power termination. This eliminates the need for a customer supplied external load for each Hybrid Coupler.



WERLATONE

Model QH10738

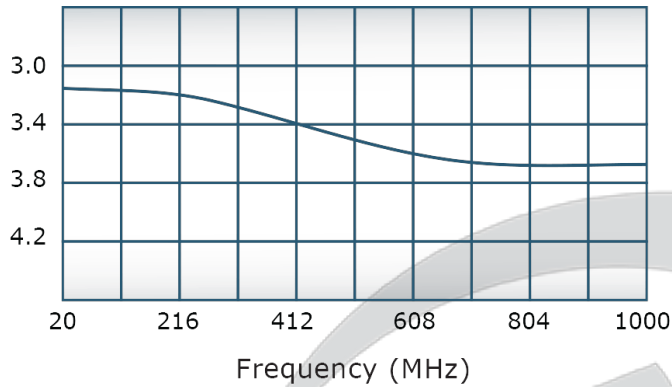


PRODUCT DATA SHEET

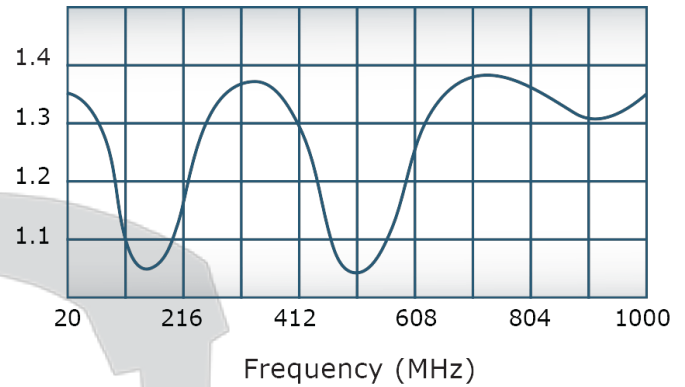
QH10738

Performance Data (Specifications subject to change without notice):

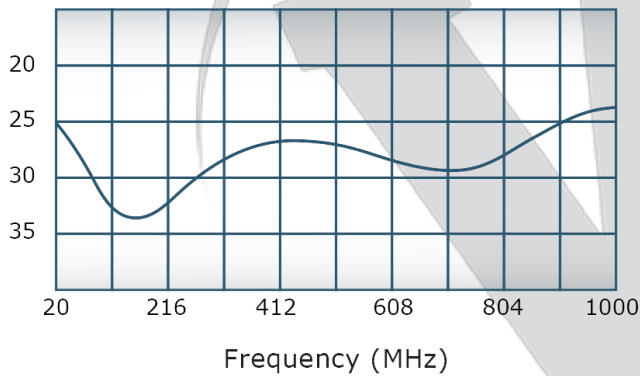
Coupling:



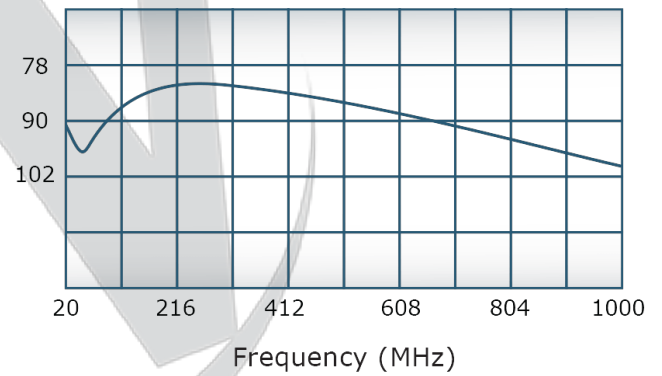
VSWR:



Isolation:



Phase Balance:



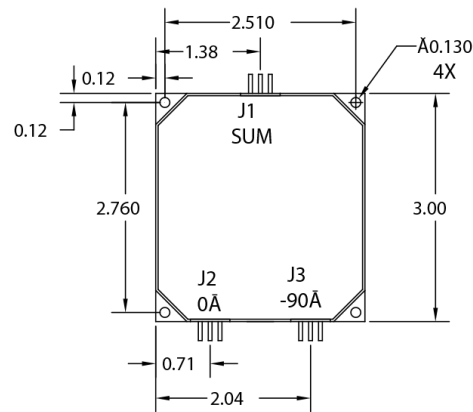
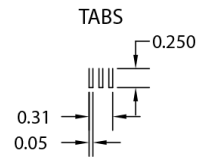
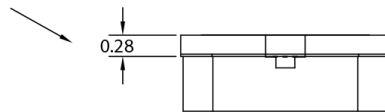
Restriction on use, duplication, or disclosure of proprietary information. This document contains proprietary information which is the sole property of Werlatone, Inc.

Werlatone, Inc. 17 Jon Barrett Road Patterson, NY 12563 T:(845)278-2220 F:(845)278-3440 sales@werlatone.com www.werlatone.com

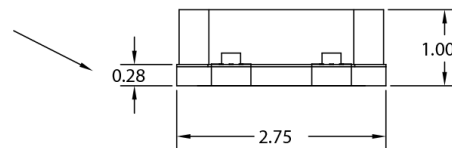
THIS DRAWING CONTAINS INFORMATION
 PROPRIETARY TO WERLATONE INC. AND
 MAY NOT BE USED OR COPIED WITHOUT
 THE WRITTEN CONSENT OF WERLATONE INC.

DATE	SYM	REVISION RECORD	AUTH	DR	CK

TO BOTTOM OF TAB



TO BOTTOM OF TAB



TOLERANCE	WERLATONE INC.			
XX +/- .015 XXX +/- .005	USED ON:	SCALE 1:1	DRAWN BY: PR APPVD BY: CS	
	TITLE OUTLINE			
	DATE 5/26/16	DRAWING NUMBER 21388-501		

Restriction on use, duplication, or disclosure of proprietary information. This document contains proprietary information which is the sole property of Werlatone, Inc.
 Werlatone, Inc. 17 Jon Barrett Road Patterson, NY 12563 T:(845)278-2220 F:(845)278-3440 sales@werlatone.com www.werlatone.com