

PRODUCT DATA SHEET

QH11113

Our patented 3 dB 90° Hybrid Couplers provide:

- Superior component performance starting at 3:1 Bandwidth.
- Thicker center boards for high power and increased repeatability.
- Bonded structures which eliminate any air gaps between substrates.
- More sections per bandwidth for better coupling flatness.
- Electrically shorter and physically smaller RF components.

Features:

High Power Wide Bandwidths Small Size Excellent Amplitude Balance

Electrical Specifications:

Frequency: 600 - 4000 MHz
 Power: 150 W CW
 Insertion Loss: 0.5 dB Max.
 VSWR: 1.40:1 Max.
 Phase Balance: $\pm 5^\circ$ dB Max.
 Amplitude Balance: ± 0.7 dB Max.
 Isolation: 17 dB Min.

Mechanical Specifications:

Type: Surface Mount
 Plating Options: QH11113-Ag: Immersion Silver (RoHS)
 Size: 1.29 x 0.99 x 0.12"

Port Configurations:

J1	J2	J3	J4
Sum	-3 dB, 0°	-3 dB, -90°	Isolated
-3 dB, 0°	Sum	Isolated	-3 dB, -90°
-3 dB, -90°	Isolated	Sum	-3 dB, 0°
Isolated	-3 dB, -90°	-3 dB, 0°	Sum

Werlatone's breakthrough technology allows us to build our existing line of Broadband 3 dB High Power 90° Hybrid Couplers. Connectorized 3 dB 90° Hybrid Coupler models are available with a choice of connectors. Several of our existing High Power 3 dB 90° RF Couplers are three port designs, wherein the difference port is internally terminated with a high power termination. This eliminates the need for a customer supplied external load for each Hybrid Coupler.

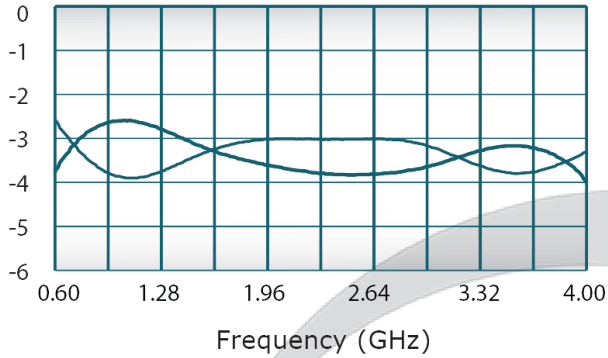


PRODUCT DATA SHEET

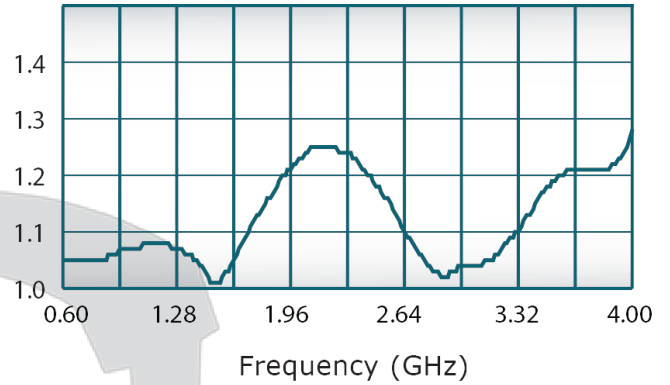
QH11113

Performance Data (Specifications subject to change without notice):

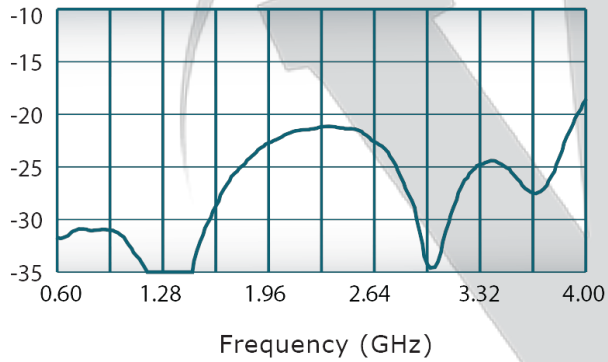
Coupling:



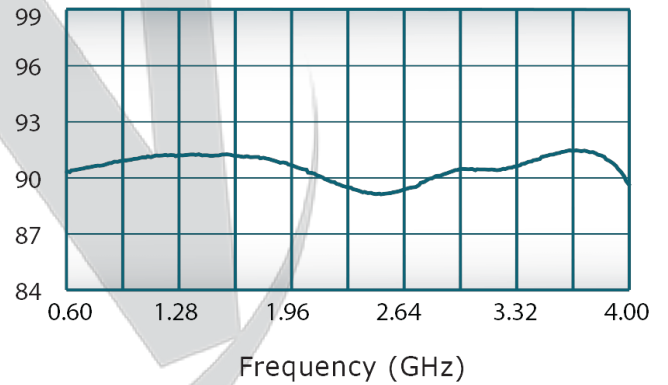
VSWR:



Isolation:



Phase Balance:

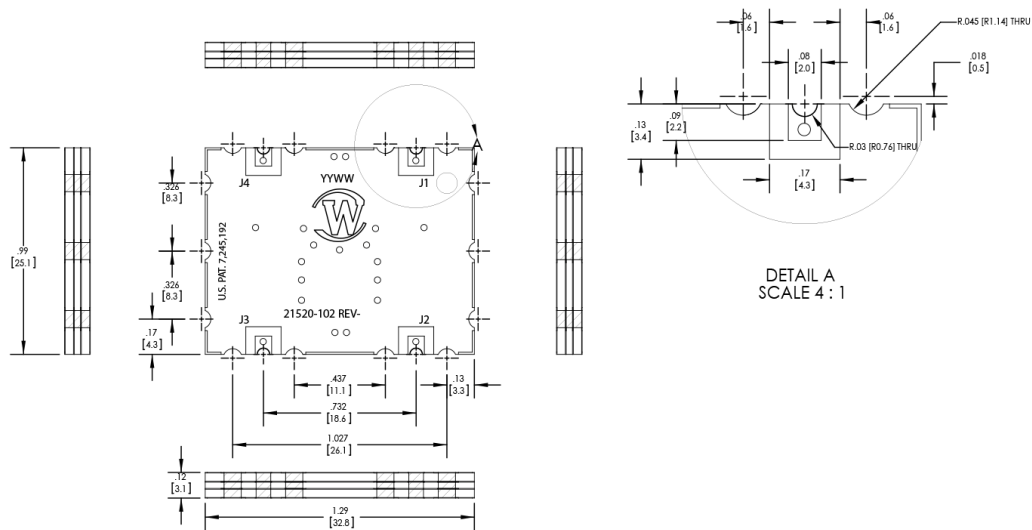


Restriction on use, duplication, or disclosure of proprietary information. This document contains proprietary information which is the sole property of Werlatone, Inc.

Werlatone, Inc. 17 Jon Barrett Road Patterson, NY 12563 T:(845)278-2220 F:(845)278-3440 sales@werlatone.com www.werlatone.com

RESTRICTION ON USE, DUPLICATION OR DISCLOSURE OF PROPRIETARY INFORMATION
This document contains proprietary information which is the sole property of Werlatone, Inc.

REVISION HISTORY			
REV.	REVISION RECORD	DATE	APPROVED
-	INITIAL RELEASE	8/22/2017	



NOTES: UNLESS OTHERWISE SPECIFIED

1. SMT
2. SURFACE FINISH: Immersion Silver (RoHS Compliant)
3. OTHER SURFACE FINISHES AVAILABLE UPON REQUEST
4. HATCHED AREAS DENOTE METALLIZATION

UNLESS OTHERWISE SPECIFIED		DATE	5/15/2017	17 Jon Barrett Rd Patterson, NY 12563
INTERPRET DRAWING PER MIL-STD-100		DATE	5/15/2017	
DIMENSIONS ARE IN INCHES (mm)		DATE	5/16/2017	TITLE
DIMENSIONS ARE IN INCHES (mm)		DATE	5/16/2017	
TOLERANCES:		DATE	5/16/2017	SIZE
ANGLES: ± 3°		DATE	5/16/2017	
3 PL ± .005 [13]		DATE	5/16/2017	CAGE CODE
2 PL ± .015 [4]		DATE	5/16/2017	
THIRD ANGLE PROJECTION		DATE	5/16/2017	DWG NO
APPLICATION		DATE	5/16/2017	
NEXT ASSY		DATE	5/16/2017	REV
USED ON		DATE	5/16/2017	
APPLICATION		DATE	5/16/2017	SCALE
APPLICATION		DATE	5/16/2017	
APPLICATION		DATE	5/16/2017	SHEET 1 OF 1
APPLICATION		DATE	5/16/2017	

Restriction on use, duplication, or disclosure of proprietary information. This document contains proprietary information which is the sole property of Werlatone, Inc.
Werlatone, Inc. 17 Jon Barrett Road Patterson, NY 12563 T:(845)278-2220 F:(845)278-3440 sales@werlatone.com www.werlatone.com