



## PRODUCT DATA SHEET

WPM11332

### Instantaneous & Simultaneous

- Local and/or Remote Monitoring
- Forward Power Reading/Monitoring (Watts or dBm)
- Reverse Power Reading/Monitoring (Watts or dBm)
- VSWR Readings (Watts, Return Loss, Rho)

### VSWR Alarm

- Customer can set up audio/visual alarm via relay contacts.
- Signal sent to closed loop.

### Temperature Monitoring (with alarm)

- One sensor, internal measurement, within Power Meter.
- One sensor, external measurement, to be placed by customer.

### General Purpose Inputs (6 ea) Multiple Use

- Track switch closures (assign to interlock group).
- Trigger alarm relay (sends email alert).
- RF presence status/alarm (safety feature).
- Alarm, activated switch.

### Accessories:

- Single Channel and Multi-Channel Displays
- RF Digital Dashboard Spreadsheet Software, (Simultaneously Monitor Outputs of 30+ Power Meters)
- PC Based Graphical User Interface Windows XP/7/8/10 Compatible

### Accuracy:

- $\pm 2\%$  to Customer Calibration Standard, at preselected frequencies.
- $\pm 5\%$  over a Multi-Octave Bandwidth
- Werlatone Calibration Traceable to (NIST) National Institute of Standards and Technology

### Power:

- AC Power Adapter (100/240 50-60 Hertz V AC)
- POE (Passive Over Ethernet, Optional POE Injector Kit Available)
- Via RS485 (Via Single Channel or Multi-Channel Displays)

### Interface (Via):

- TCP/IP - SNMP and Browser Interface via Local Area Network
- RS232, Serial
- RS485 - Form Addressable Serial Network
- User ID and Password Protected for Access and Control
- Multiple units can be Networked and Simultaneously Monitored On-Site or Remotely (TCP/IP/SNMP/Serial)

RoHS Compliant Design Available  
Custom Connector Configurations Available

### Electrical Specifications:

Frequency: 10 - 200 MHz  
Power: 10,000 W CW

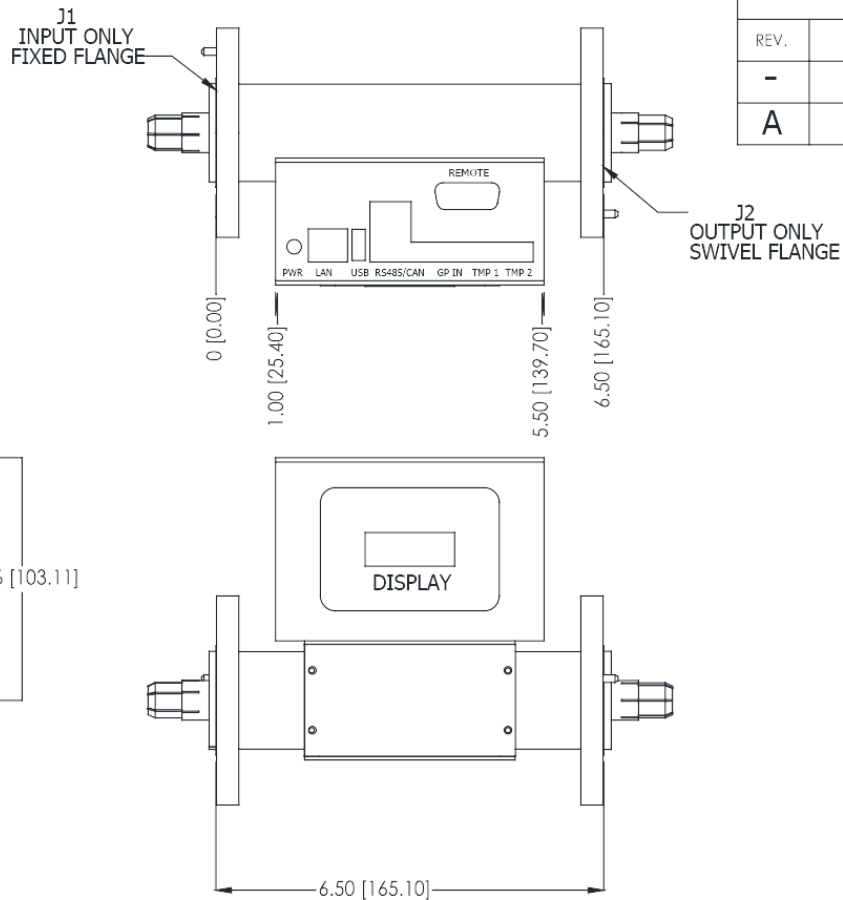
### Mechanical Specifications:

Type: Connectorized  
Operating Temperature: -55°C to +75°C  
Storage Temperature: -60°C to +85°C

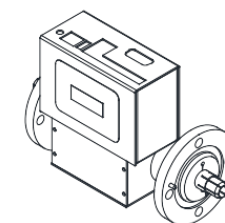
### Connector Configurations:

Model	Input(J1)	Output(J2)
WPM11332-83	1 5/8" EIA	1 5/8" EIA

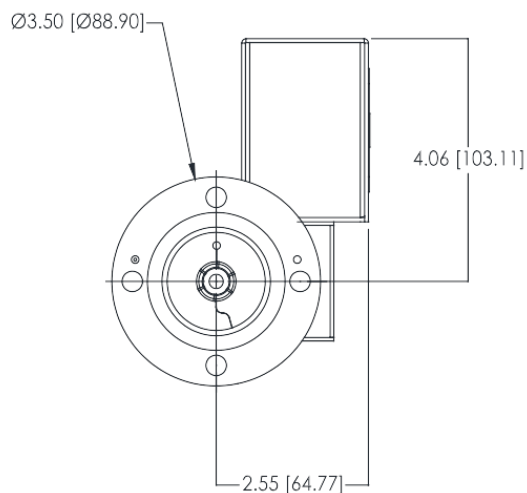
**RESTRICTION ON USE, DUPLICATION OR DISCLOSURE OF PROPRIETARY INFORMATION**  
This document contains proprietary information  
which is the sole property of Werlatone, Inc.





REVISION HISTORY			
REV.	REVISION RECORD	DATE	APPROVED
-	INITIAL RELEASE	7/6/2020	CS
A	ECN 9965	9/29/2020	CS



VIEW FOR REFERENCE ONLY



**NOTES: UNLESS OTHERWISE SPECIFIED**  
**1. CONNECTORS: J1-J2 1 5/8 (EIA)**

		UNLESS OTHERWISE SPECIFIED		OWN	DATE	 WERLATON SINCE 1965		17 Jon Barrett Rd Patterson, NY 12568	
		<ul style="list-style-type: none"><li>• INTERNET DRAWING MAY PS-STD-100</li><li>• CORRESPONDING PER ASME Y14.199-2009</li><li>• TOLERANCES ARE IN DIMS UNLESS OTHERWISE SPECIFIED</li><li>• DIMENSIONS ARE IN DIMS (mm)</li><li>• DIMENSIONAL LIMITS APPLY BEFORE PROCESSING</li><li>• TOLERANCES:</li></ul>		PLP	7/24/2015	 WERLATON SINCE 1965			
		<ul style="list-style-type: none"><li>ANGLES ± 2°</li><li>2 FR ± 0.01 (1:1)</li><li>2 FR ± 0.01 (1:1)</li><li>2 FR ± 0.01 (1:1)</li><li>• REMOVE ALL BURRS AND SHARP EDGES R.0.1 MAX</li><li>• RECONSTRUCT HATCHED DIMS 0.002 FIM</li><li>• MACHINE TOOL REPAIRS 0.002 MAX</li></ul>		CHK	DATE				
				CS	7/6/2020		TITLE		
				ENGR	DATE		OUTLINE		
				WGR	DATE	SIZE	CAGE CODE	DWG NO	
				QA	DATE	B 28812		21340-505	
NEXT ASSY		WPM11073 USED ON		RLSE	DATE	SCALE		1:2	
APPLICATION		THIRD ANGLE PROJECTION						SHEET 1 OF 1	

**Restriction on use, duplication, or disclosure of proprietary information.** This document contains proprietary information which is the sole property of Werlatone, Inc.  
Werlatone, Inc. 17 Jon Barrett Road Patterson, NY 12563 T:(845)278-2220 F:(845)278-3440 sales@werlatone.com www.werlatone.com