

PRODUCT DATA SHEET
WPM11343
Instantaneous & Simultaneous

- Local and/or Remote Monitoring
- Forward Power Reading/Monitoring (Watts or dBm)
- Reverse Power Reading/Monitoring (Watts or dBm)
- VSWR Readings (Watts, Return Loss, Rho)

VSWR Alarm

- Customer can set up audio/visual alarm via relay contacts.
- Signal sent to closed loop.

Temperature Monitoring (with alarm)

- One sensor, internal measurement, within Power Meter.
- One sensor, external measurement, to be placed by customer.

General Purpose Inputs (6 ea) Multiple Use

- Track switch closures (assign to interlock group).
- Trigger alarm relay (sends email alert).
- RF presence status/alarm (safety feature).
- Alarm, activated switch.

Accessories:

- Single Channel and Multi-Channel Displays
- RF Digital Dashboard Spreadsheet Software, (Simultaneously Monitor Outputs of 30+ Power Meters)
- PC Based Graphical User Interface Windows XP/7/8/10 Compatible

Accuracy:

- $\pm 2\%$ to Customer Calibration Standard, at preselected frequencies.
- $\pm 5\%$ over a Multi-Octave Bandwidth
- Werlatone Calibration Traceable to (NIST) National Institute of Standards and Technology

Power:

- AC Power Adapter (100/240 50-60 Hertz V AC)
- POE (Passive Over Ethernet, Optional POE Injector Kit Available)
- Via RS485 (Via Single Channel or Multi-Channel Displays)

Interface (Via):

- TCP/IP - SNMP and Browser Interface via Local Area Network
- RS232, Serial
- RS485 - Form Addressable Serial Network
- User ID and Password Protected for Access and Control
- Multiple units can be Networked and Simultaneously Monitored On-Site or Remotely (TCP/IP/SNMP/Serial)

RoHS Compliant Design Available Custom Connector Configurations Available

Electrical Specifications:

Frequency: 20 - 520 MHz

Power: 1000 W CW

Mechanical Specifications:

Type: Connectorized

Operating Temperature: -55°C to +75°C

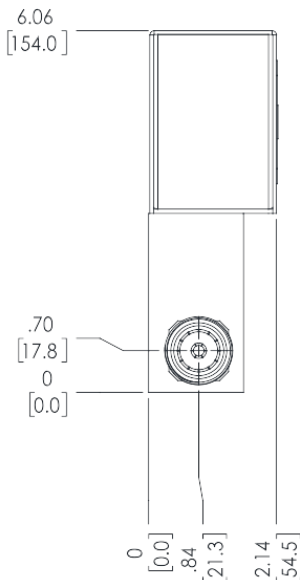
Storage Temperature: -60°C to +85°C

Connector Configurations:


Model	Input(J1)	Output(J2)
WPM11343-12	N Female	N Female
WPM11343-712	N Male	N Female
WPM11343-22	7/16 Female	7/16 Female

This document contains proprietary information
which is the sole property of Werlatone, Inc.

REV.	REVISION RECORD	DATE	APPROVED
-	INITIAL RELEASE	10/15/2018	CS



1. CONNECTORS: J1- J2: 7-16 (FEMALE)

WPM11376 USED ON		• UNLESS OTHERWISE SPECIFIED		OWN	DATE	 WERLATON SINCE 1965	17 Jon Barrett Rd Patterson, NY 12563
		• INTERPRET DRAWING IN ACC. W/ STD. ISO • CONSIDER READING FROM RIGHT TO LEFT • DIMENSIONS ARE IN INCHES UNLESS NOTED • DIMENSIONS ARE IN INCHES UNLESS NOTED • TOLERANCES: ANGLES ± .5° 3 IN. ± .005 (1:1) 2 IN. ± .015 (1:1) • REMOVE ALL LOBES AND SHARP EDGES R.1 MAX. • QUANTITY MATCHED CSD. 303 FPM • MACHINE TOOL: HEMPHAM 303 FPM		PLP	9/27/2018		
NEXT ASSY APPLICATION		THIRD ANGLE PROJECTION		CHK	DATE	TITLE OUTLINE	REV -
				CS	10/15/2018		
WPM11376 USED ON		THIRD ANGLE PROJECTION		ENGR	DATE	SIZE B 28812	CAGE CODE 21651-500
				HGR	DATE		
WPM11376 USED ON		THIRD ANGLE PROJECTION		QA	DATE	DWG NO 21651-500	REV -
				RLSE	DATE		
SCALE 1:2		SHEET 1 OF 1					

Verlatone, Inc. 17 Jon Barrett Road Patterson, NY 12563 T:(845)278-2220 F:(845)278-3440 sales@werlatone.com www.werlatone.com