



PRODUCT DATA SHEET

WPM11514

Instantaneous & Simultaneous

- Local and/or Remote Monitoring
- Forward Power Reading/Monitoring (Watts or dBm)
- Reverse Power Reading/Monitoring (Watts or dBm)
- VSWR Readings (Watts, Return Loss, Rho)

VSWR Alarm

- Customer can set up audio/visual alarm via relay contacts.
- Signal sent to closed loop.

Temperature Monitoring (with alarm)

- One sensor, internal measurement, within Power Meter.
- One sensor, external measurement, to be placed by customer.

General Purpose Inputs (6 ea) Multiple Use

- Track switch closures (assign to interlock group).
- Trigger alarm relay (sends email alert).
- RF presence status/alarm (safety feature).
- Alarm, activated switch.

Accessories:

- Single Channel and Multi-Channel Displays
- RF Digital Dashboard Spreadsheet Software, (Simultaneously Monitor Outputs of 30+ Power Meters)
- PC Based Graphical User Interface Windows XP/7/8/10 Compatible

Accuracy:

- $\pm 2\%$ to Customer Calibration Standard, at preselected frequencies.
- $\pm 5\%$ over a Multi-Octave Bandwidth
- Werlatone Calibration Traceable to (NIST) National Institute of Standards and Technology

Power:

- AC Power Adapter (100/240 50-60 Hertz V AC)
- POE (Passive Over Ethernet, Optional POE Injector Kit Available)
- Via RS485 (Via Single Channel or Multi-Channel Displays)

Interface (Via):

- TCP/IP - SNMP and Browser Interface via Local Area Network
- RS232, Serial
- RS485 - Form Addressable Serial Network
- User ID and Password Protected for Access and Control
- Multiple units can be Networked and Simultaneously Monitored On-Site or Remotely (TCP/IP/SNMP/Serial)

RoHS Compliant Design Available
Custom Connector Configurations Available

Electrical Specifications:

Frequency: 1.5 - 32 MHz
Power: 25,000 W CW

Mechanical Specifications:

Type: Connectorized
Operating Temperature: -55°C to +75°C
Storage Temperature: -60°C to +85°C

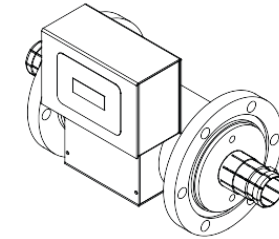
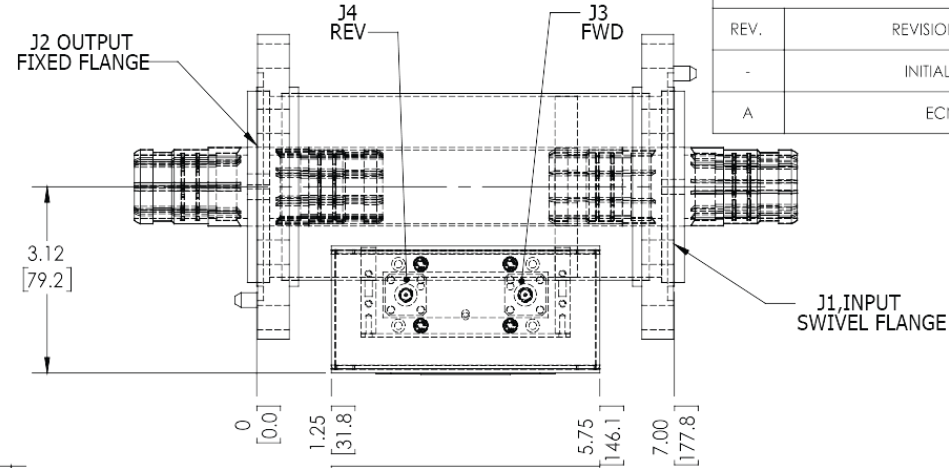
Connector Configurations:

Model	Input(J1)	Output(J2)
WPM11073-93	3 1/8" EIA	3 1/8" EIA

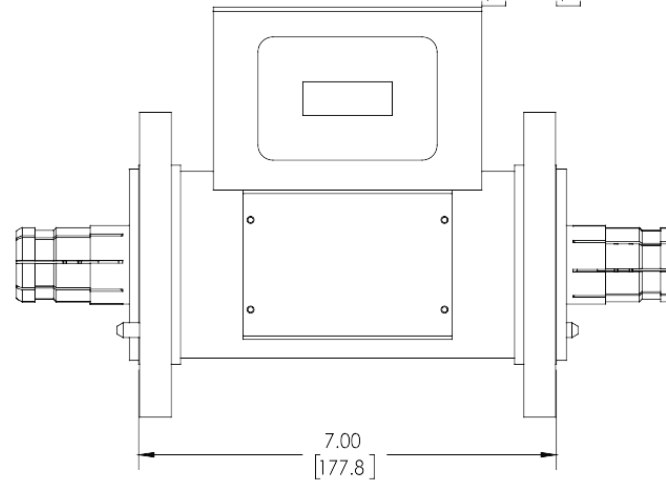
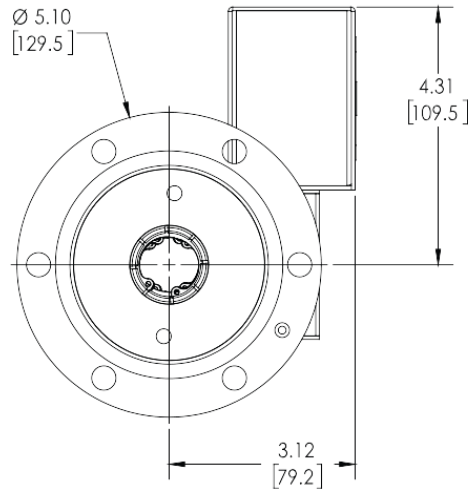
RESTRICTION ON USE, DUPLICATION OR DISCLOSURE OF PROPRIETARY INFORMATION
This document contains proprietary information which is the sole property of Werlatone, Inc.

REVISION HISTORY

REV.	REVISION RECORD	DATE	APPROVED
-	INITIAL RELEASE	7/24/2015	CS
A	ECN 9654	9/7/2018	CS



VIEW FOR REFERENCE ONLY



<div>UNLESS OTHERWISE SPECIFIED</div> <div><ul style="list-style-type: none">• INTERPRET DRAWING IN ACC. WITH STD-100• DIMENSIONING PER ASME Y14.5M 2009• PARENTHESES ARE FOR REF. ONLY• DIMENSIONS ARE IN INCHES (MM)• DIMENSIONAL LIMITS APPLY BEFORE PROCESSES• TOLERANCES:<ul style="list-style-type: none">• ANGLES ± 2°• 2 PL ± .005 (L1)• 2 PL ± .015 (L1)• REMOVE ALL BURRS AND SHARP EDGES R.01 MAX• CONCENTRICITY FRACTURED DIA. .002 FIM• FINISH TOOLS NEARBY .002 MAX</div>		OWN	DATE	<div><div>W</div><div>WERLATON SINCE 1965</div></div>	<div>17 Jon Barrett Rd Patterson, NY 12563</div>		
		PLP	7/24/2015				
		CHK	DATE				
		CS	DATE				
		ENGR	DATE				
<div>WPM11514</div> <div>NEXT ASSY USED ON</div> <div>APPLICATION</div>		TITLE					
		MPGR	DATE				
		QA	DATE	SIZE	CAGE CODE	DWG NO	REV
				B 28812		21340-501	A
				SCALE 1:4			SHEET 1 OF 1

Restriction on use, duplication, or disclosure of proprietary information. This document contains proprietary information which is the sole property of Werlatone, Inc.
Werlatone, Inc. 17 Jon Barrett Road Patterson, NY 12563 T:(845)278-2220 F:(845)278-3440 sales@werlatone.com www.werlatone.com